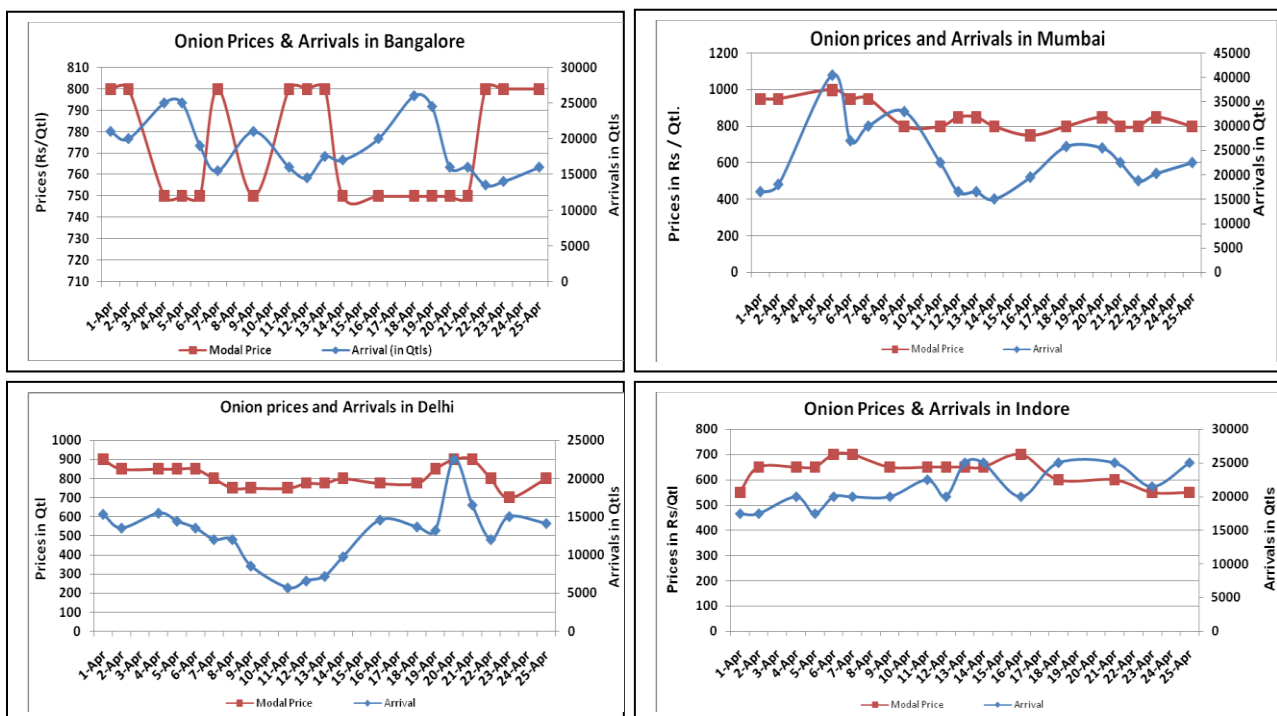


Onion Fundamentals:

- Mixed sentiment witnessed in Onion major spot market on Monday.
- Mostly Onion supply reported up in the spot market.
- Average Rabi onion yield in 2015-16 is estimated to be 23.91 ton/Ha against last year's average of 20.6 ton/Ha. Yield is expected higher due to favorable weather conditions, availability of water and lower pest attack as compared to previous year.
- In Madhya Pradesh Rabi onion acreage is expected to be higher by 53.03% against last year acreage of 91387 hectares. This year Rabi acreage estimate is approximately 139849.53 hectares.
- Acreage is increased due to higher onion prices last year, good weather condition and re-sowing of onion after soybean crop was damaged.
- In Bangalore, onion is arriving in market from Maharashtra and local region. Prices are trading in the range of Rs 500-Rs 1000/ quintal.

Onion wholesale Prices & Arrivals in Producing & Consumption Centers



(Source: AGRIWATCH)

Note: The above graph is made on data collected by Agriwatch through private sources because Agmarknet data are not consistent and lots of gaps in reporting.

Onion Prices & Arrivals in Major Mandis as on 25.April.2016

Mandis	Lasalgaon	Pimpalgaon	Niphad	Pune	Indore	Delhi	Bangalore
Price (Rs/Qtl)	500-800	800-1000	300-750	700-800	300-800	500-1000	500-1100
Arrivals (Qtl)	14000	16000	3000	7500	25000	14100	16000

Onion Prices & Arrivals in Major Mandis as on 23.April.2016

Mandis	Lasalgaon	Pimpalgaon	Niphad	Pune	Indore	Delhi	Bangalore
Price (Rs/Qtl)	Closed	Closed	Closed	Closed	300-800	500-1050	500-1100
Arrivals (Qtl)	Closed	Closed	Closed	Closed	21500	15000	14000

(Source: AGRIWATCH)

Wholesale and Retail Prices in Major Markets:

Wholesale Prices											Retail Prices
Prices in Rs/Quintal	25.April.2016#			23.April.2016#			Agmarknet 23.April.2016*			Consumer Affairs 23 April.	Consumer Affairs 23 April.
Market	Min. Price	Max. Price	Modal Price	Min. Price	Max. Price	Modal Price	Min. Price	Max. Price	Modal Price	Modal Price	Modal Price
Delhi	500	1000	800	500	1050	700	-	-	-	800	2200
Lasalgaon	500	800	650	Closed	Closed	Closed	-	-	-	-	-
Pimpalgaon	800	1000	800	Closed	Closed	Closed	-	-	-	-	-
Pune	700	800	750	Closed	Closed	Closed	-	-	-	-	-
Mumbai	700	900	800	700	1000	850	650	1000	800	925	1800
Indore	300	800	550	300	800	550	-	-	-	1100	1300
Bangalore	500	1100	800	500	1100	800	-	-	-	1200	1600
Ahmednagar	200	850	700	200	850	700	-	-	-	-	-
Solapur	300	900	600	300	800	550	-	-	-	-	-

(Source: #Agriwatch, *Agmarknet)

Onion Arrivals in Major Markets:

Arrivals in Qtls	Ahmedabad	Pune	Mumbai	Delhi	Indore	Bangalore	Ahmednagar	Solapur
25 Apr*	8380	7500	22500	14100	25000	16000	20000	15000
23 Apr*	8389	Closed	20250	15000	21500	14000	30000	15000
23 Apr#	-	-	13100	-	-	-	-	-

(Source: *Agriwatch, # Agmarknet)

Disclaimer

The information contained in this document has been compiled by Agriwatch from sources believed to be reliable, such as NHB, Agmarknet, etc. and directly from traders in mandis. However, users of this data are requested to use the information with due caution and crosscheck with other sources. This document is not, and should not be construed as an offer to sell or buy any commodities. This document may not be reproduced, distributed or published without the express consent of SFAC