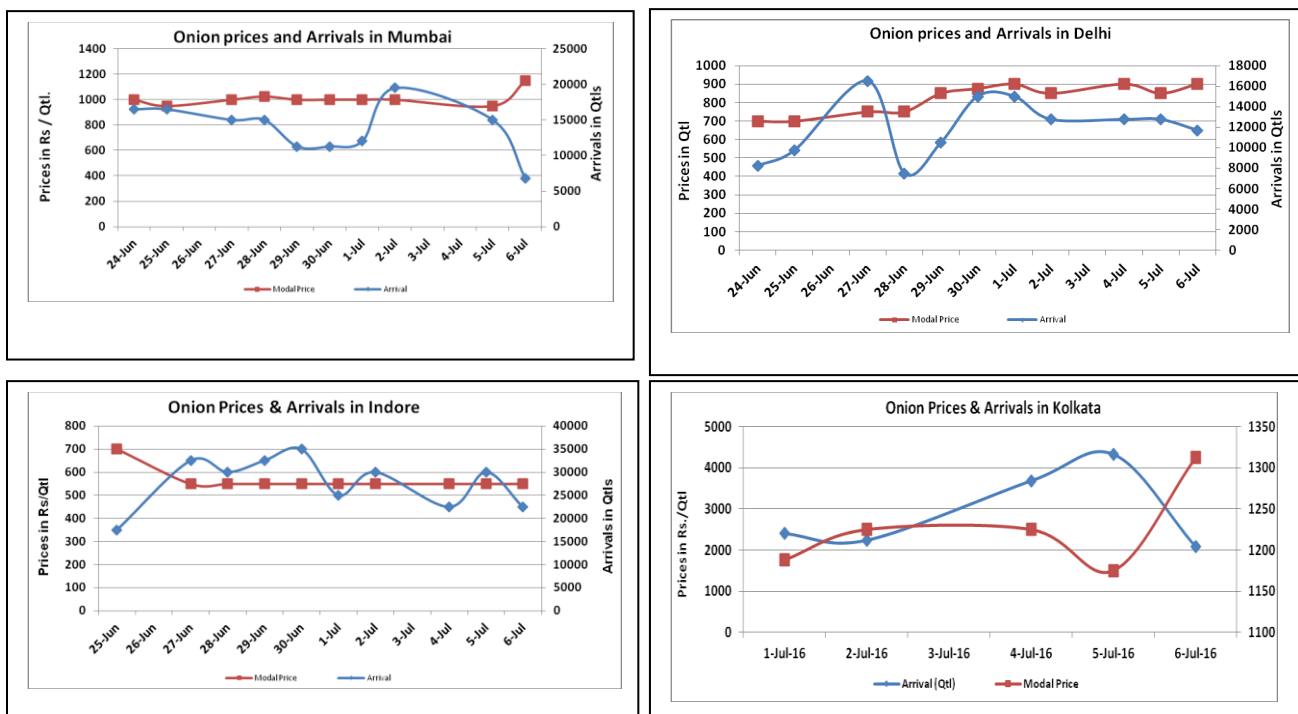


### Onion Fundamentals:

- In Delhi, modal onion prices are trading near Rs 800/ quintal compared to Rs 1600/ quintal in corresponding period of 2015.
- In M.P, Rabi onion acreage is expected to be higher by 54.97% against last year acreage of 91387 hectares. This year Rabi acreage estimate is approximately 140146.44 hectares.
- In M.P, approximately 16.79 lakh tons onion is stored in 2015-16 compared to 12.64 lakh tons in corresponding period of 2015 during Rabi season.
- In Lasalgaon, modal onion prices are trading near Rs 750/ quintal compared to Rs 1350/ quintal in corresponding period of 2015.

### Onion wholesale Prices & Arrivals in Producing & Consumption Centers



(Source: AGRIWATCH)

Note: The above graph is made on data collected by Agriwatch through private sources because Agmarknet data are not consistent and lots of gaps in reporting.

### Onion Prices & Arrivals in Major Mandis as on 06.July.2016

Mandis	Lasalgaon	Pimpalgaon	Niphad	Pune	Indore	Delhi	Bangalore
Price (Rs/Qtl)	Closed	600-900	Closed	800-1100	300-800	600-1200	Closed
Arrivals (Qtl)	Closed	5000	Closed	10500	22500	11700	Closed

### Onion Prices & Arrivals in Major Mandis as on 05.July.2016

Mandis	Lasalgaon	Pimpalgaon	Niphad	Pune	Indore	Delhi	Bangalore
Price (Rs/Qtl)	600-800	600-950	330-820	600-1000	300-700	600-1200	500-1200
Arrivals (Qtl)	10000	5000	1200	13500	21500	12300	18000

(Source: AGRIWATCH)

### Wholesale and Retail Prices in Major Markets:

Prices in Rs/Quintal	Wholesale Prices									Consumer Affairs 06 July.	
	06.July.2016#			05.July.2016#			Agmarknet 05.July.2016*				
Market	Min. Price	Max. Price	Modal Price	Min. Price	Max. Price	Modal Price	Min. Price	Max. Price	Modal Price	Wholesale Price	Retail Price
Delhi	600	1200	900	600	1200	900	375	1175	733	750	2100
Lasalgaon	Closed	Closed	Closed	600	800	700	251	935	800	-	-
Pimpalgaon	600	900	840	600	950	800	200	941	620	-	-
Pune	800	1100	950	600	1000	800	500	1000	900	-	-
Mumbai	1000	1300	1150	800	1100	950	700	900	850	NR	1700
Indore	300	800	550	300	700	500	100	800	500	800	1000
Bangalore	Closed	Closed	Closed	500	1200	850	800	1000	900	1200	1600
Ahmednagar	300	1200	750	300	1200	750	-	-	-	-	-
Solapur	Closed	Closed	Closed	200	1100	650	100	1300	600	-	-

(Source: #Agriwatch,\*Agmarknet)

### Onion Arrivals in Major Markets:

Arrivals in Qtls	Ahmedabad	Pune	Mumbai	Delhi	Indore	Bangalore	Ahmednagar	Solapur
06th July*	Closed	10500	6750	11700	22500	Closed	20000	Closed
05th July*	5144	13500	15000	12300	21500	18000	20000	6000
05th July#	5144	5930	9600	13798	5985	16360	-	10860

(Source: \*Agriwatch, # Agmarknet)

### Disclaimer

The information contained in this document has been compiled by Agriwatch from sources believed to be reliable, such as NHB, Agmarknet, etc. and directly from traders in mandis. However, users of this data are requested to use the information with due caution and crosscheck with other sources. This document is not, and should not be construed as an offer to sell or buy any commodities. This document may not be reproduced, distributed or published without the express consent of SFAC