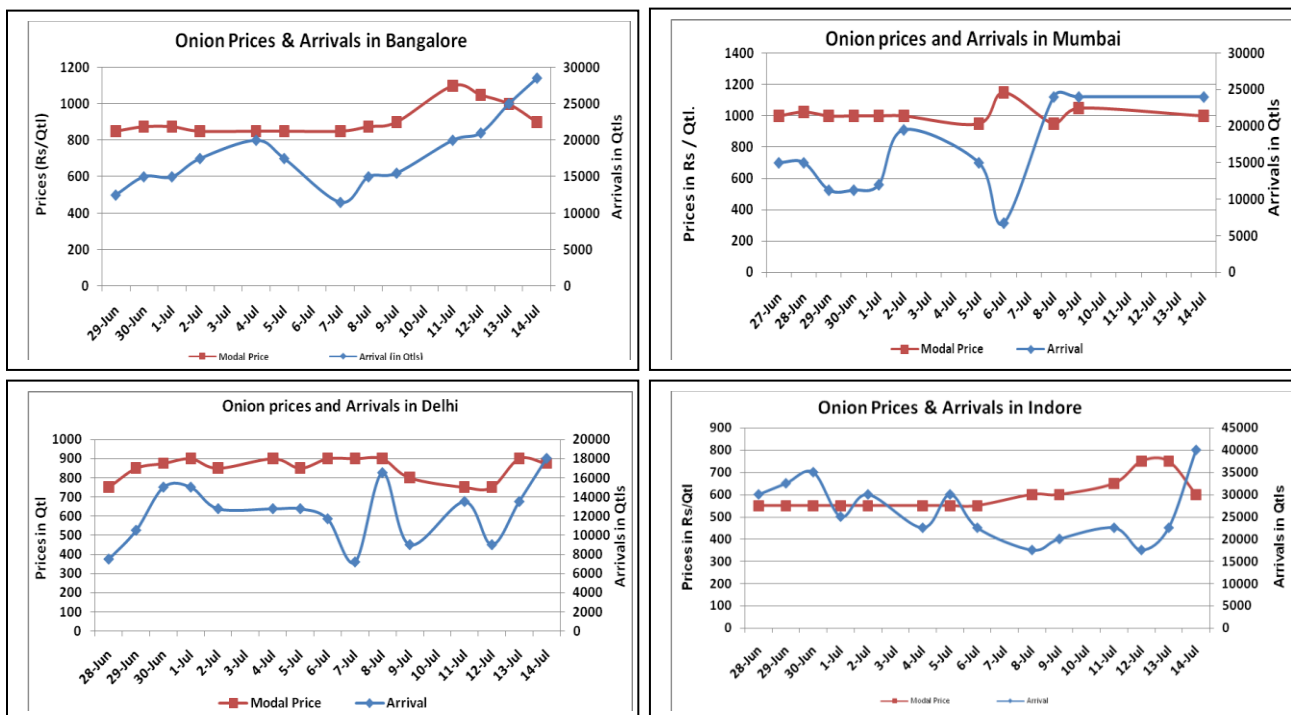


### Onion Fundamentals:

- Weak sentiment witnessed in Onion domestic market on Thursday.
- Increasing supply in the major spot market pressurizes the prices.
- In M.P, Onion storage is higher this year because of higher production which has resulted in to lower onion prices in market.
- In M.P, approximately 16.79 lakh tons onion is stored in 2015-16 compared to 12.64 lakh tons in corresponding period of 2015 during Rabi season.
- In Delhi, modal onion prices are trading near Rs 875/ quintal compared to Rs 1575/ quintal in corresponding period of 2015.
- In Lasalgaon, modal onion prices are trading near Rs 750/ quintal compared to Rs 1350/ quintal in corresponding period of 2015.

### Onion wholesale Prices & Arrivals in Producing & Consumption Centers



(Source: AGRIWATCH)

Note: The above graph is made on data collected by Agriwatch through private sources because Agmarknet data are not consistent and lots of gaps in reporting.

### Onion Prices & Arrivals in Major Mandis as on 14 July 2016

Mandis	Lasalgaon	Pimpalgaon	Niphad	Pune	Indore	Delhi	Bangalore
Price (Rs/Qtl)	Closed	Closed	Closed	NR	300-900	500-1250	500-1300
Arrivals (Qtl)	Closed	Closed	Closed	NR	40000	18000	28500

### Onion Prices & Arrivals in Major Mandis as on 13 July 2016

Mandis	Lasalgaon	Pimpalgaon	Niphad	Pune	Indore	Delhi	Bangalore
Price (Rs/Qtl)	Closed	Closed	Closed	Closed	400-1100	500-1300	600-1400
Arrivals (Qtl)	Closed	Closed	Closed	Closed	22500	13500	25000

(Source: AGRIWATCH)

## Wholesale and Retail Prices in Major Markets:

Prices in Rs/Quintal	Wholesale Prices									Consumer Affairs 14 July.	
	14.July.2016#			13.July.2016#			Agmarknet 13.July.2016*				
Market	Min. Price	Max. Price	Modal Price	Min. Price	Max. Price	Modal Price	Min. Price	Max. Price	Modal Price	Wholesale Price	Retail Price
Delhi	500	1250	875	500	1300	900	375	1250	844	850	2200
Lasalgaon	Closed	Closed	Closed	Closed	Closed	Closed	-	-	-	-	-
Pimpalgaon	Closed	Closed	Closed	Closed	Closed	Closed	-	-	-	-	-
Pune	Closed	Closed	Closed	Closed	Closed	Closed	800	1400	1000	-	-
Mumbai	Closed	Closed	Closed	Closed	Closed	Closed	-	-	-	1100	2400
Indore	300	900	600	400	1100	750	-	-	-	800	1000
Bangalore	500	1300	900	600	1400	1000	900	1100	1000	1200	1600
Ahmednagar	Closed	Closed	Closed	Closed	Closed	Closed	-	-	-	-	-
Solapur	Closed	Closed	Closed	Closed	Closed	Closed	-	-	-	-	-

(Source: #Agriwatch,\*Agmarknet)

## Onion Arrivals in Major Markets:

Arrivals in Qtls	Ahmedabad	Pune	Mumbai	Delhi	Indore	Bangalore	Ahmednagar	Solapur
14th July*	NR	-	24000	18000	40000	28500	Closed	Closed
13th July*	11637	Closed	Closed	13500	22500	25000	Closed	Closed
13th July#	11637	2420	-	7668	-	23620	-	-

(Source: \*Agriwatch, # Agmarknet)

## Disclaimer

The information contained in this document has been compiled by Agriwatch from sources believed to be reliable, such as NHB, Agmarknet, etc. and directly from traders in mandis. However, users of this data are requested to use the information with due caution and crosscheck with other sources. This document is not, and should not be construed as an offer to sell or buy any commodities. This document may not be reproduced, distributed or published without the express consent of SFAC