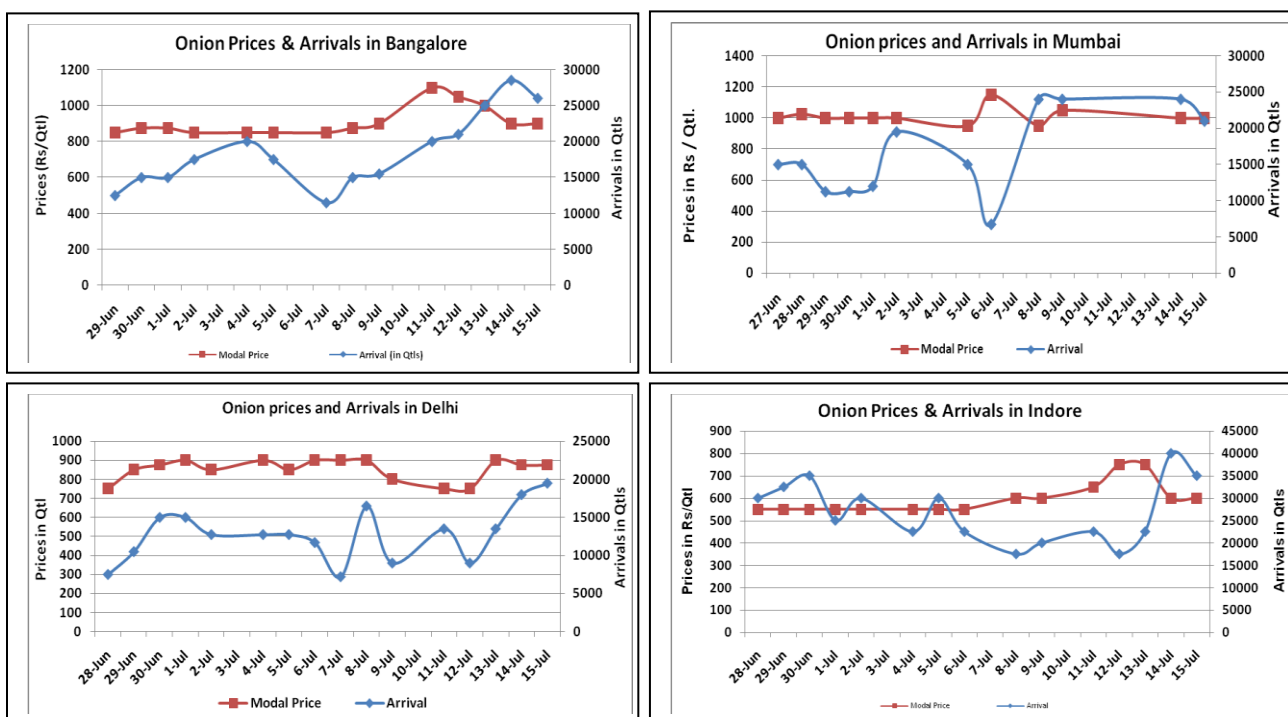


Onion Fundamentals:

- Weak sentiment witnessed in Onion domestic market on Friday.
- Onion supply in the major spot market slightly down.
- Lasalgaon market reported closed from last couple of days due to traders strike.
- In M.P, Onion storage is higher this year because of higher production which has resulted in to lower onion prices in market.
- In M.P, approximately 16.79 lakh tons onion is stored in 2015-16 compared to 12.64 lakh tons in corresponding period of 2015 during Rabi season.
- In Delhi, modal onion prices are trading near Rs 875/ quintal compared to Rs 1575/ quintal in corresponding period of 2015.

Onion wholesale Prices & Arrivals in Producing & Consumption Centers



(Source: AGRIWATCH)

Note: The above graph is made on data collected by Agriwatch through private sources because Agmarknet data are not consistent and lots of gaps in reporting.

Onion Prices & Arrivals in Major Mandis as on 15.July.2016

Mandis	Lasalgaon	Pimpalgaon	Niphad	Pune	Indore	Delhi	Bangalore
Price (Rs/Qtl)	Closed	Closed	Closed	700-1000	300-900	500-1250	500-1300
Arrivals (Qtl)	Closed	Closed	Closed	10500	35000	19500	26000

Onion Prices & Arrivals in Major Mandis as on 14.July.2016

Mandis	Lasalgaon	Pimpalgaon	Niphad	Pune	Indore	Delhi	Bangalore
Price (Rs/Qtl)	Closed	Closed	Closed	NR	300-900	500-1250	500-1300
Arrivals (Qtl)	Closed	Closed	Closed	NR	40000	18000	28500

(Source: AGRIWATCH)

Wholesale and Retail Prices in Major Markets:

Prices in Rs/Quintal	Wholesale Prices									Consumer Affairs 15 July.	
	15.July.2016#			14.July.2016#			Agmarknet 14.July.2016*				
Market	Min. Price	Max. Price	Modal Price	Min. Price	Max. Price	Modal Price	Min. Price	Max. Price	Modal Price	Wholesale Price	Retail Price
Delhi	500	1250	875	500	1250	875	375	1250	833	775	2200
Lasalgaon	Closed	Closed	Closed	Closed	Closed	Closed	-	-	-	-	-
Pimpalgaon	Closed	Closed	Closed	Closed	Closed	Closed	-	-	-	-	-
Pune	700	1000	850	Closed	Closed	Closed	500	1200	1000	-	-
Mumbai	800	1200	1000	Closed	Closed	Closed	800	1200	1000	1000	2200
Indore	300	900	600	300	900	600	-	-	-	800	1000
Bangalore	500	1300	900	500	1300	900	800	1000	900	1200	1600
Ahmednagar	300	1000	650	300	1000	650	100	1200	675	-	-
Solapur	Closed	Closed	Closed	Closed	Closed	Closed	100	1300	700	-	-

(Source: #Agriwatch,*Agmarknet)

Onion Arrivals in Major Markets:

Arrivals in Qtls	Ahmedabad	Pune	Mumbai	Delhi	Indore	Bangalore	Ahmednagar	Solapur
15th July*	10535	10500	21000	19500	35000	26000	16000	Closed
14th July*	8335	-	24000	18000	40000	28500	Closed	Closed
14th July#	8335	8320	12550	13286	-	29930	11480	1010

(Source: *Agriwatch, # Agmarknet)

Disclaimer

The information contained in this document has been compiled by Agriwatch from sources believed to be reliable, such as NHB, Agmarknet, etc. and directly from traders in mandis. However, users of this data are requested to use the information with due caution and crosscheck with other sources. This document is not, and should not be construed as an offer to sell or buy any commodities. This document may not be reproduced, distributed or published without the express consent of SFAC