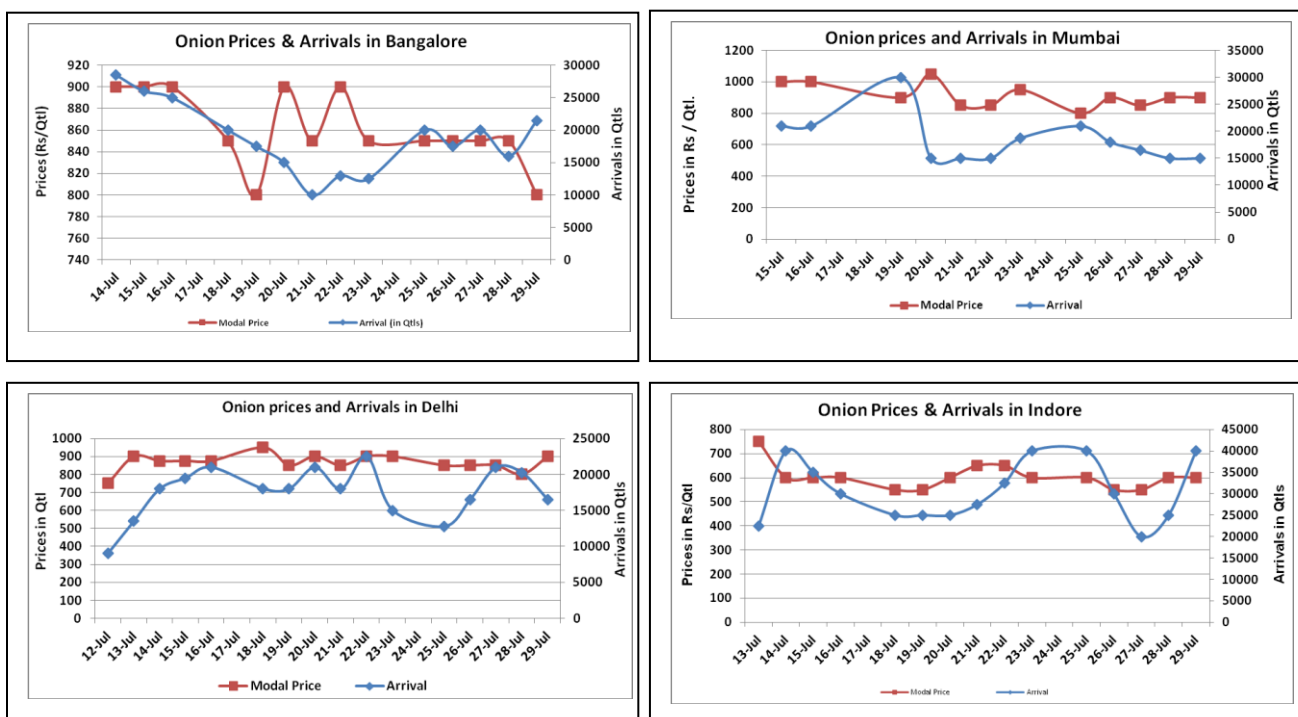


### Onion Fundamentals:

- In Delhi, modal onion prices are trading in the range of Rs 875/quintal compared to Rs 1800/ quintal in corresponding period of 2015.
- In Indore, modal onion prices are trading near Rs 600/ quintal compared to Rs 1540/ quintal in corresponding period of 2015. Prices are comparatively lower this year because of higher production.
- In Karnataka, as on 25.7.2016 so far approximately 64514 hectares of kharif area has been sown compared to 57001 hectares of area in corresponding period of 2015.
- Dhardwad, Gadag and Chitradurga are the major Kharif onion growing districts in Karnataka.

### Onion wholesale Prices & Arrivals in Producing & Consumption Centers



(Source: AGRIWATCH)

Note: The above graph is made on data collected by Agriwatch through private sources because Agmarknet data are not consistent and lots of gaps in reporting.

### Onion Prices & Arrivals in Major Mandis as on 29.July.2016

Mandis	Lasalgaon	Pimpalgaon	Niphad	Pune	Indore	Delhi	Bangalore
Price (Rs/Qtl)	650-900	550-900	Closed	500-900	300-900	700-1200	500-1100
Arrivals (Qtl)	1500	1710	Closed	22500	40000	16500	21500

### Onion Prices & Arrivals in Major Mandis as on 28.July.2016

Mandis	Lasalgaon	Pimpalgaon	Niphad	Pune	Indore	Delhi	Bangalore
Price (Rs/Qtl)	750-900	500-920	500-900	500-900	300-900	700-1150	500-1200
Arrivals (Qtl)	1750	1250	100	21000	25000	20250	16000

(Source: AGRIWATCH)

## Wholesale and Retail Prices in Major Markets:

Prices in Rs/Quintal	Wholesale Prices									Consumer Affairs 29.July.	
	29.July.2016#			28.July.2016#			Agmarknet 28.July.2016*				
Market	Min. Price	Max. Price	Modal Price	Min. Price	Max. Price	Modal Price	Min. Price	Max. Price	Modal Price	Wholesale Price	Retail Price
Delhi	700	1200	900	700	1150	800	375	1175	821	825	2200
Lasalgaon	650	900	775	750	900	825	-	-	-	-	-
Pimpalgaon	550	900	825	500	920	825	300	922	670	-	-
Pune	500	900	700	500	900	700	400	900	800	-	-
Mumbai	700	1100	900	700	1100	900	700	1000	850	850	1700
Indore	300	900	600	300	900	600	100	800	500	800	1000
Bangalore	500	1100	800	500	1200	850	800	1000	900	1600	2000
Ahmednagar	100	900	500	100	900	500	100	1025	800	-	-
Solapur	200	800	500	200	700	450	100	1150	500	-	-

(Source: #Agriwatch,\*Agmarknet)

## Onion Arrivals in Major Markets:

Arrivals in Qtls	Ahmedabad	Pune	Mumbai	Delhi	Indore	Bangalore	Ahmednagar	Solapur
29th July*	9148	22500	15000	16500	40000	21500	60000	5000
28th July*	4457	21000	15000	20250	25000	16000	60000	5000
28th July#	4457	8390	7350	11039	9040	16360	23140	5780

(Source: \*Agriwatch, # Agmarknet)

## Disclaimer

The information contained in this document has been compiled by Agriwatch from sources believed to be reliable, such as NHB, Agmarknet, etc. and directly from traders in mandis. However, users of this data are requested to use the information with due caution and crosscheck with other sources. This document is not, and should not be construed as an offer to sell or buy any commodities. This document may not be reproduced, distributed or published without the express consent of SFAC