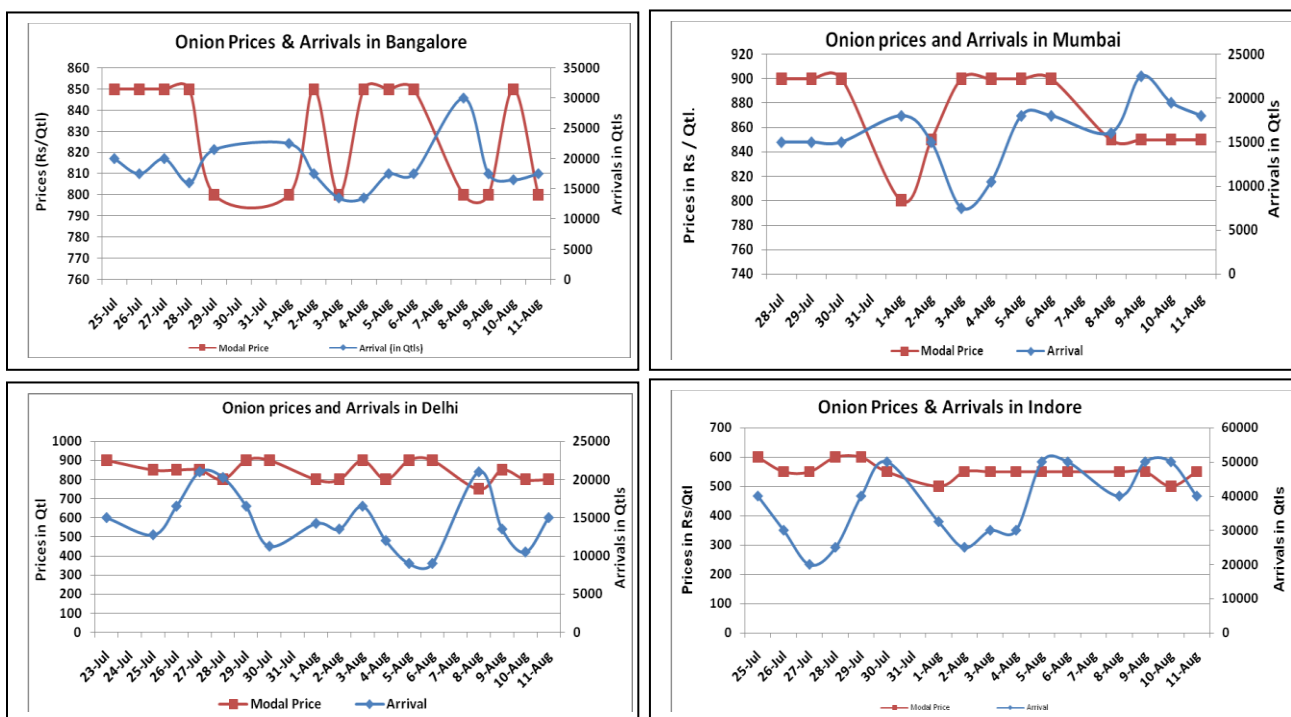


Onion Fundamentals:

- Mixed sentiment witnessed in Onion domestic market on Thursday.
- According to trade sources in Satara district of Maharashtra, kharif onion sowing is expected to be 7-8% lesser than previous year.
- In Delhi, modal onion prices are trading in the range of Rs 875/quintal compared to Rs 1800/ quintal in corresponding period of 2015.
- In A.P, as on 3.8.2016 sown area is 13892 hectares of the 28003 ha targeted area. So far 16493 ha of area are sown compared to 15765 ha in corresponding period of 2015.
- In Kurnool is the largest onion producing district. Kurnool alone contributes approximately 75% of the total sown area in A.P.

Onion wholesale Prices & Arrivals in Producing & Consumption Centers



(Source: AGRIWATCH)

Note: The above graph is made on data collected by Agriwatch through private sources because Agmarknet data are not consistent and lots of gaps in reporting.

Onion Prices & Arrivals in Major Mandis as on 11.Aug.2016

Mandis	Lasalgaon	Pimpalgaon	Niphad	Pune	Indore	Delhi	Bangalore
Price (Rs/Qtl)	500-750	850-1000	300-700	500-900	300-800	500-1100	500-1100
Arrivals (Qtl)	5000	10000	50	18000	40000	15000	17500

Onion Prices & Arrivals in Major Mandis as on 10.Aug.2016

Mandis	Lasalgaon	Pimpalgaon	Niphad	Pune	Indore	Delhi	Bangalore
Price (Rs/Qtl)	400-700	400-870	100-700	500-900	300-700	500-1000	500-1200
Arrivals (Qtl)	5000	3300	125	15000	50000	10500	16500

(Source: AGRIWATCH)

Wholesale and Retail Prices in Major Markets:

Prices in Rs/Quintal	Wholesale Prices									Consumer Affairs 11.Aug.2016	
	11.Aug.2016#			10.Aug.2016#			Agmarknet 10.Aug.2016*				
Market	Min. Price	Max. Price	Modal Price	Min. Price	Max. Price	Modal Price	Min. Price	Max. Price	Modal Price	Wholesale Price	Retail Price
Delhi	500	1100	800	500	1000	800	375	1200	789	800	2200
Lasalgaon	500	750	625	400	700	550	300	832	725	-	-
Pimpalgaon	850	1000	925	400	870	635	300	915	700	-	-
Pune	500	900	700	500	900	700	400	900	800	-	-
Mumbai	700	1000	850	700	1000	850	800	900	850	850	1800
Indore	300	800	550	300	700	500	NR	NR	NR	700	900
Bangalore	500	1100	800	500	1200	850	400	600	500	1600	2000
Ahmednagar	200	900	550	200	1000	600	NR	NR	NR	-	-
Solapur	200	1000	600	200	1000	600	100	1150	550	-	-

(Source: #Agriwatch, *Agmarknet)

Onion Arrivals in Major Markets:

Arrivals in Qtls	Ahmedabad	Pune	Mumbai	Delhi	Indore	Bangalore	Ahmednagar	Solapur
11th Aug*	5589	18000	18000	15000	40000	17500	50000	4000
10th Aug*	4440	15000	19500	10500	50000	16500	60000	7500
10th Aug #	8633	11140	11300	12325	NR	16640	NR	6830

(Source: *Agriwatch, # Agmarknet)

Disclaimer

The information contained in this document has been compiled by Agriwatch from sources believed to be reliable, such as NHB, Agmarknet, etc. and directly from traders in mandis. However, users of this data are requested to use the information with due caution and crosscheck with other sources. This document is not, and should not be construed as an offer to sell or buy any commodities. This document may not be reproduced, distributed or published without the express consent of SFAC