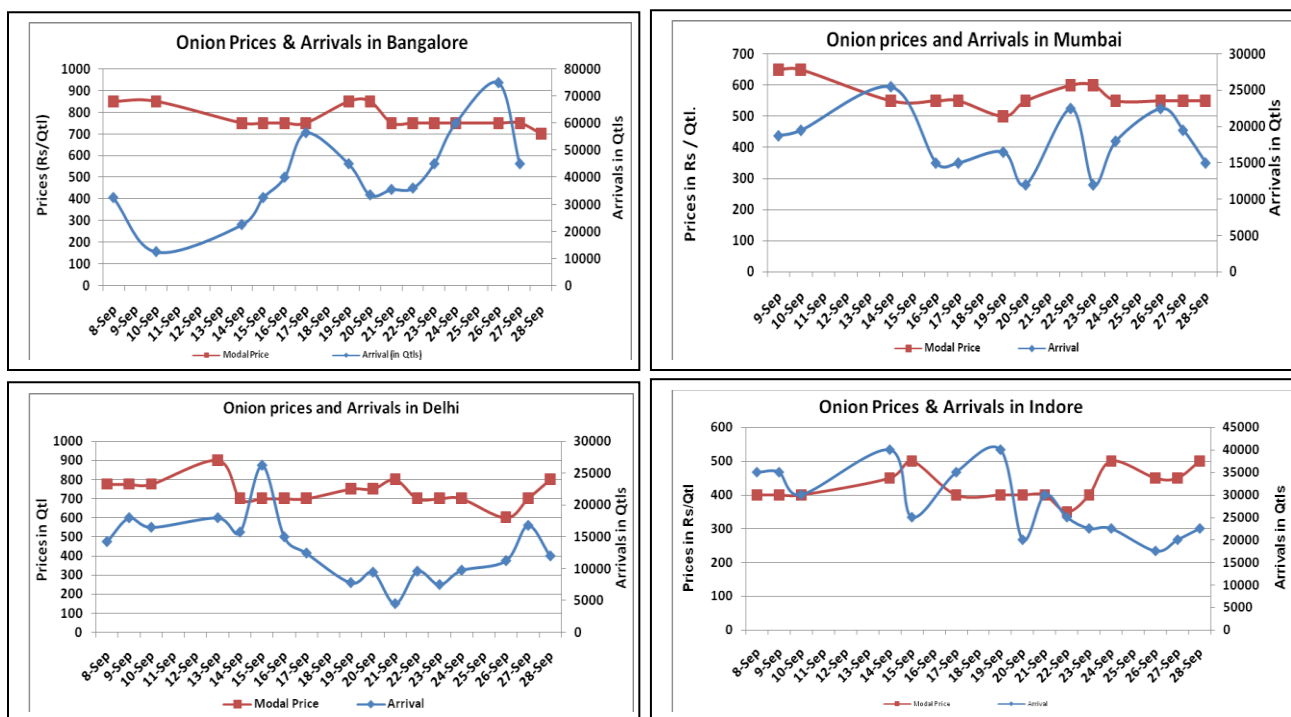


Onion Fundamentals:

- Mixed sentiment witnessed in Onion major domestic market on Wednesday.
- In A.P as on 21.9.2016, approximately 27671 ha of area is sown compared to 27753 ha in corresponding period of 2015 during same season.
- In Delhi, modal onion prices are trading near Rs 745/ quintal compared to Rs 4100/ quintal in corresponding period of 2015.
- In Karnataka as on 19.9.2016, so far approximately 130249 ha of area is sown compared to 124735 ha in corresponding period of 2015 during same season.
- In Karnataka, Dhardwad, Gadag and Chitradurga are the major onion producing districts.
- In Kurnool approximately 27671 ha of area is sown compared to 27753 ha in corresponding year of 2015.

Onion wholesale Prices & Arrivals in Producing & Consumption Centers



(Source: AGRIWATCH)

Note: The above graph is made on data collected by Agriwatch through private sources because Agmarknet data are not consistent and lots of gaps in reporting.

Onion Prices & Arrivals in Major Mandis as on 28.Sep.2016

Mandis	Lasalgaon	Pimpalgaon	Niphad	Pune	Indore	Delhi	Bangalore
Price (Rs/Qtl)	200-500	400-600	150-450	400-900	300-700	400-1200	500-900
Arrivals (Qtl)	8750	5000	3000	15000	22500	12000	45000

Onion Prices & Arrivals in Major Mandis as on 27.Sep.2016

Mandis	Lasalgaon	Pimpalgaon	Niphad	Pune	Indore	Delhi	Bangalore
Price (Rs/Qtl)	200-500	200-650	200-400	500-750	200-700	400-1000	500-1000
Arrivals (Qtl)	11250	10000	3750	11250	20000	16800	75000

(Source: AGRIWATCH)

Wholesale and Retail Prices in Major Markets:

Prices in Rs/Quintal	Wholesale Prices									Consumer Affairs	
	28.Sep.2016#			27.Sep.2016#			Agmarknet 27.Sep.2016*			28.Sep.2016	
Market	Min. Price	Max. Price	Modal Price	Min. Price	Max. Price	Modal Price	Min. Price	Max. Price	Modal Price	Wholesale Price	Retail Price
Delhi	400	1200	800	400	1000	700	250	1250	647	650	2100
Lasalgaon	200	500	350	200	500	350	NR	NR	NR	-	-
Pimpalgaon	400	600	500	200	650	400	100	631	301	-	-
Pune	400	900	650	500	750	625	300	700	600	-	-
Mumbai	400	700	550	400	700	550	500	600	550	550	1700
Indore	300	700	500	200	700	450	NR	NR	NR	700	900
Bangalore	500	900	700	500	1000	750	700	1000	850	800	1200
Ahmednagar	100	800	450	100	800	450	NR	NR	NR	-	-
Solapur	200	1100	650	200	1000	600	100	1150	450	-	-

(Source: #Agriwatch,*Agmarknet)

Onion Arrivals in Major Markets:

Arrivals in Qtls	Ahmedabad	Pune	Mumbai	Delhi	Indore	Bangalore	Ahmednagar	Solapur
28 th Sep*	9383	15000	15000	12000	22500	45000	25000	6000
27 th Sep*	7565	11250	19500	16800	20000	75000	25000	9000
27 th Sep #	+	10160	10150	15908	-	55970	-	5450

(Source: *Agriwatch, # Agmarknet)

Disclaimer

The information contained in this document has been compiled by Agriwatch from sources believed to be reliable, such as NHB, Agmarknet, etc. and directly from traders in mandis. However, users of this data are requested to use the information with due caution and crosscheck with other sources. This document is not, and should not be construed as an offer to sell or buy any commodities. This document may not be reproduced, distributed or published without the express consent of SFAC