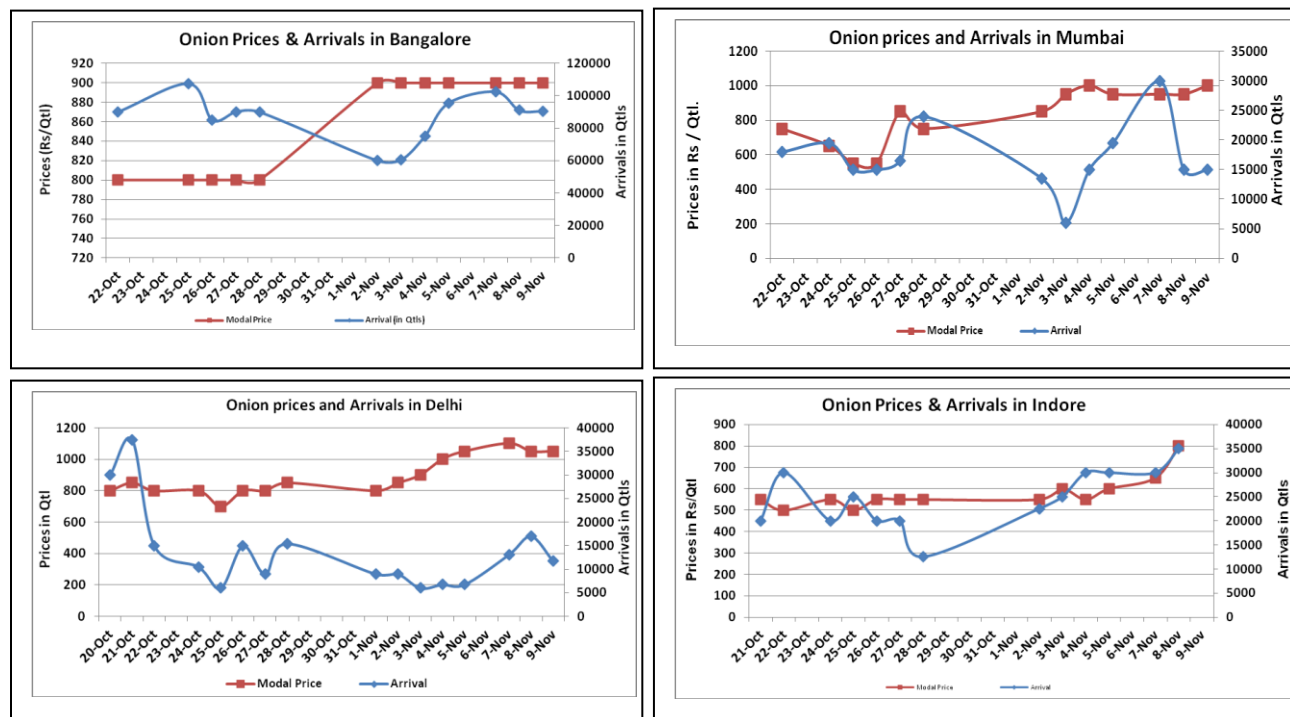


Onion Fundamentals:

- In Bangalore, onion is arriving in market from local region and Maharashtra. Maximum onion is arriving in market from Dhardwad, Gadag and Chitradurga districts.
- In Maharashtra, local kharif crop has also started arriving in market.
- In Delhi, onion is arriving in market from Maharashtra, Rajasthan, Haryana and smaller quantity from Gujarat.
- Across the country fresh kharif crop is continuously arriving in market from A.P. Karnataka and Maharashtra.

Onion wholesale Prices & Arrivals in Producing & Consumption Centers



(Source: AGRIWATCH)

Note: The above graph is made on data collected by Agriwatch through private sources because Agmarknet data are not consistent and lots of gaps in reporting.

Onion Prices & Arrivals in Major Mandis as on 09.Nov.2016

Mandis	Lasalgaon	Pimpalgaon	Niphad	Pune	Indore	Delhi	Bangalore
Price (Rs/Qtl)	Closed	Closed	Closed	800-1400	Closed	1000-1500	500-1300
Arrivals (Qtl)	Closed	Closed	Closed	12000	Closed	11750	90500

Onion Prices & Arrivals in Major Mandis as on 08.Nov.2016

Mandis	Lasalgaon	Pimpalgaon	Niphad	Pune	Indore	Delhi	Bangalore
Price (Rs/Qtl)	700-1300	700-1050	300-900	800-1300	500-1100	800-1300	500-1300
Arrivals (Qtl)	5000	6250	3000	15000	35000	17000	91000

(Source: AGRIWATCH)

Wholesale and Retail Prices in Major Markets:

Prices in Rs/Quintal	Wholesale Prices									Consumer Affairs	
	09.Nov.2016#			08.Nov.2016#			Agmarknet 08.Nov.2016*			9.Nov.2016	
Market	Min. Price	Max. Price	Modal Price	Min. Price	Max. Price	Modal Price	Min. Price	Max. Price	Modal Price	Wholesale Price	Retail Price
Delhi	1000	1500	1050	800	1300	1050	200	1500	839	1050	2400
Lasalgaon	Closed	Closed	Closed	700	1300	1000	501	932	750	-	-
Pimpalgaon	Closed	Closed	Closed	700	1050	875	200	1155	710	-	-
Pune	800	1400	1100	800	1300	1050	400	1100	1000	-	-
Mumbai	700	1300	1000	700	1200	950	750	850	800	800	1800
Indore	Closed	Closed	Closed	500	1100	800	-	-	-	600	800
Bangalore	500	1300	900	500	1300	900	1000	1400	1200	800	1200
Ahmednagar	1000	1300	1150	1000	1300	1150	-	-	-	-	-
Solapur	Closed	Closed	Closed	200	1500	850	100	1650	600	-	-

(Source: #Agriwatch, *Agmarknet)

Onion Arrivals in Major Markets:

Arrivals in Qtls	Ahmedabad	Pune	Mumbai	Delhi	Indore	Bangalore	Ahmednagar	Solapur
09th Nov*	11173	12000	15000	11720	Closed	90500	25000	Closed
08th Nov*	5420	15000	15000	17000	35000	91000	25000	20000
08th Nov#	5420	14570	9200	11941	-	91220	-	1130

(Source: *Agriwatch, # Agmarknet)

Disclaimer

The information contained in this document has been compiled by Agriwatch from sources believed to be reliable, such as NHB, Agmarknet, etc. and directly from traders in mandis. However, users of this data are requested to use the information with due caution and crosscheck with other sources. This document is not, and should not be construed as an offer to sell or buy any commodities. This document may not be reproduced, distributed or published without the express consent of SFAC