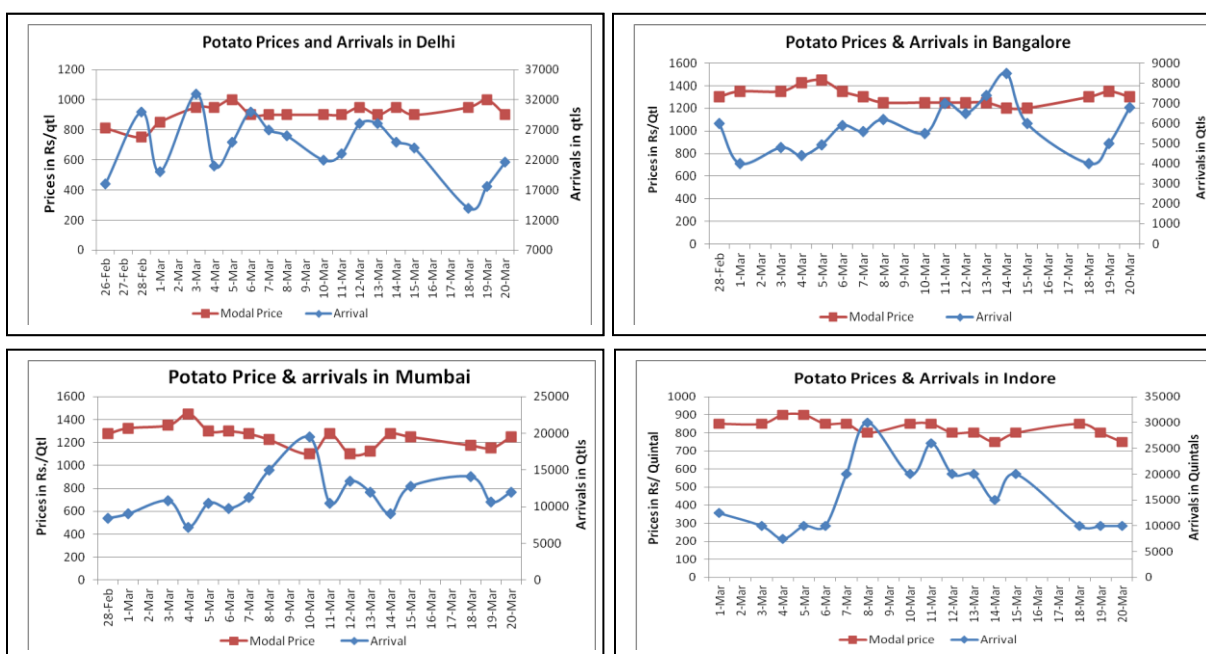


Potato Fundamentals:

- Restricted arrivals from producing belts support the Potato Spot as well as future prices.
- In U.P, cold storages are already filled by 30-35% of total cold storages capacity which is approximately 90 lakh ton
- According to trade sources in Bihar, cold storages are already filled by 50% of their total capacity.
- In West Bengal last year cold storages were filled by 6 million ton and this year it is expected that cold storages will get filled by 5.5 million ton.
- In M.P, potato production is almost similar to last year but storage capacity has increased whereas in few parts of Punjab and Bihar production is marginally less as compared to previous year.

Potato Wholesale Prices & Arrivals trend in Consumption Centers



(Source: AGRIWATCH)

Potato Prices & Arrivals in major Mandis as on 20.3.2014

Mandis	Burdwan(W.B)	Khandauli	Farrukhabad	Kanpur	Indore	Tarkeshwar(W.B)	Bangalore
Price (Rs./Qtl)	880	1000-1150	900	800-1100	500-1000	920	1200-1400
Arrivals (Qtl)	--	45000	1000	10000	10000	--	6800

Potato Prices & Arrivals in major Mandis as on 19.3.2014

Mandis	Burdwan(W.B)	Khandauli	Farrukhabad	Kanpur	Indore	Tarkeshwar(W.B)	Bangalore
Price (Rs./Qtl)	880	1000-1150	Closed	900-1100	500-1100	920	1300-1400
Arrivals (Qtl)	--	36000	Closed	7000	10000	--	5000

(Source: Agriwatch)

Potato Futures Analysis: (As on 21 March 2014)

	Exchange	Expiry Date	Today's Close Price	Previous Close Price	Net Change	Today's Open Interest	Previous Day Open Interest	Change
POTATO	MCX	31-Mar-14	1221.90	1197.00	24.90	8985	10065	-1080
POTATO	MCX	30-Apr-14	1230.20	1217.00	13.20	11355	11220	135
POTATO	MCX	30-May-14	1282.00	1267.00	15.00	33165	34245	-1080
POTATO	MCX	30-Jun-14	1331.10	1312.00	19.10	18795	17955	840

(Source: MCX)

Daily Price Chart of MCX- Agra April Contract:



(Source: Agriwatch)

Candlestick chart pattern reveals bullish sentiment in the market. RSI is moving up in neutral zone in the market indicates prices may go up in the market. Volumes remain average. Prices may take support at Rs. 1200/- quintal in short term. Expected Price range may vary in the range of Rs. 1200 - 1240/ quintal.

Potato Prices in major markets – Wholesale vs. Retail as on 20 March 2014

Centre	Min. Price	Max. Price	Modal Price	Retail Price
AHMEDABAD	800	1000	900	1200
AMRITSAR	740	850	800	1500
BANGALORE	1200	1400	1300	2000
BHOPAL	700	800	750	1000
BHUBANESHWAR	1000	1100	1080	1150
CHANDIGARH	600	800	700	1200
CHENNAI	1500	1700	1600	2200
DELHI	800	1675	1237	1800
GANGATOK	800	1000	900	1300
GUWAHATI	1000	1080	1040	1200
JAIPUR	750	850	805	1300
JAMMU	1100	1200	1150	1500
LUCKNOW	800	1000	900	1400
MUMBAI	1000	1400	1200	1500
MUMBAI	1200	1450	1325	2000
NASIK	1100	1300	1210	1500
PATNA	1000	1100	1050	1600
PUNE	1200	1400	1300	1800
RAIPUR	900	1100	1000	1800
RANCHI	1070	1200	1100	1500
SHIMLA	1600	1700	1650	2000
SRINAGAR	1100	1300	1200	2000

Disclaimer

The information contained in this document has been compiled by Agriwatch from sources believed to be reliable, such as NHB, Agmarknet, etc. and directly from traders in mandis. However, users of this data are requested to use the information with due caution and crosscheck with other sources. This document is not, and should not be construed as an offer to sell or buy any commodities. This document may not be reproduced, distributed or published without the express consent of SFAC