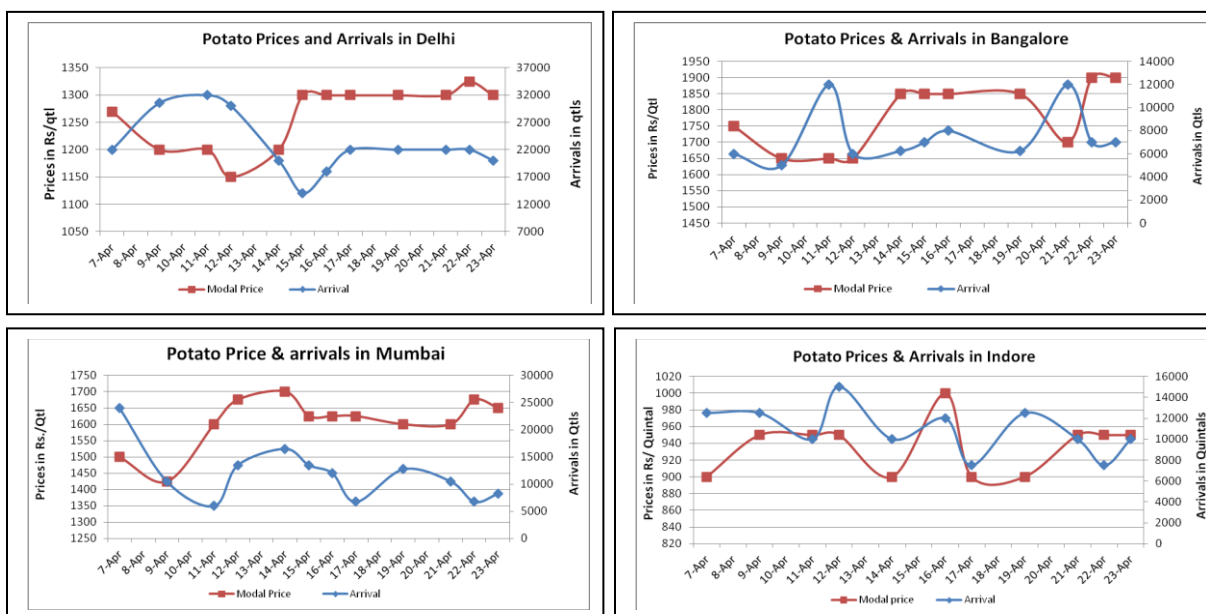


Potato Fundamentals:

- Mostly Potato prices reported up in the major domestic market on Wednesday.
- In U.P, cold storages are expected to be filled by approximately 70-75% of total capacity which is approximately 110 lakh ton.
- Prices of potato are expected to increase ahead across the country due to less storage in U.P and West Bengal which are major producing states.
- In West Bengal, cold storages are filled with approximately 84%-86% of the total capacity which is nearly 60.84 lakh ton.
- Uttar Pradesh is expected to produce approximately 13 million tons of potato this year, compared with 14.5 million tons last year as crop was affected due to incessant rains during harvest period.

Potato Wholesale Prices & Arrivals trend in Consumption Centers



(Source: AGRIWATCH)

Potato Prices & Arrivals in major Mandis as on 23.4.2014

Mandis	Burdwan (W.B)	Khandauli	Farrukhabad	Kanpur	Indore	Tarkeshwar(W.B)	Bangalore
Price (Rs./Qtl)	1140	1400-1500	Closed	1300-1500	500-1400	1200	1900
Arrivals (Qtl)	--	54000	Closed	9000	10000	--	7000

Potato Prices & Arrivals in major Mandis as on 22.4.2014

Mandis	Burdwan (W.B)	Khandauli	Farrukhabad	Kanpur	Indore	Tarkeshwar(W.B)	Bangalore
Price (Rs./Qtl)	1140	1200-1500	Closed	1100-1500	500-1400	1200	1800-2000
Arrivals (Qtl)	--	49500	Closed	13000	7500	--	7000

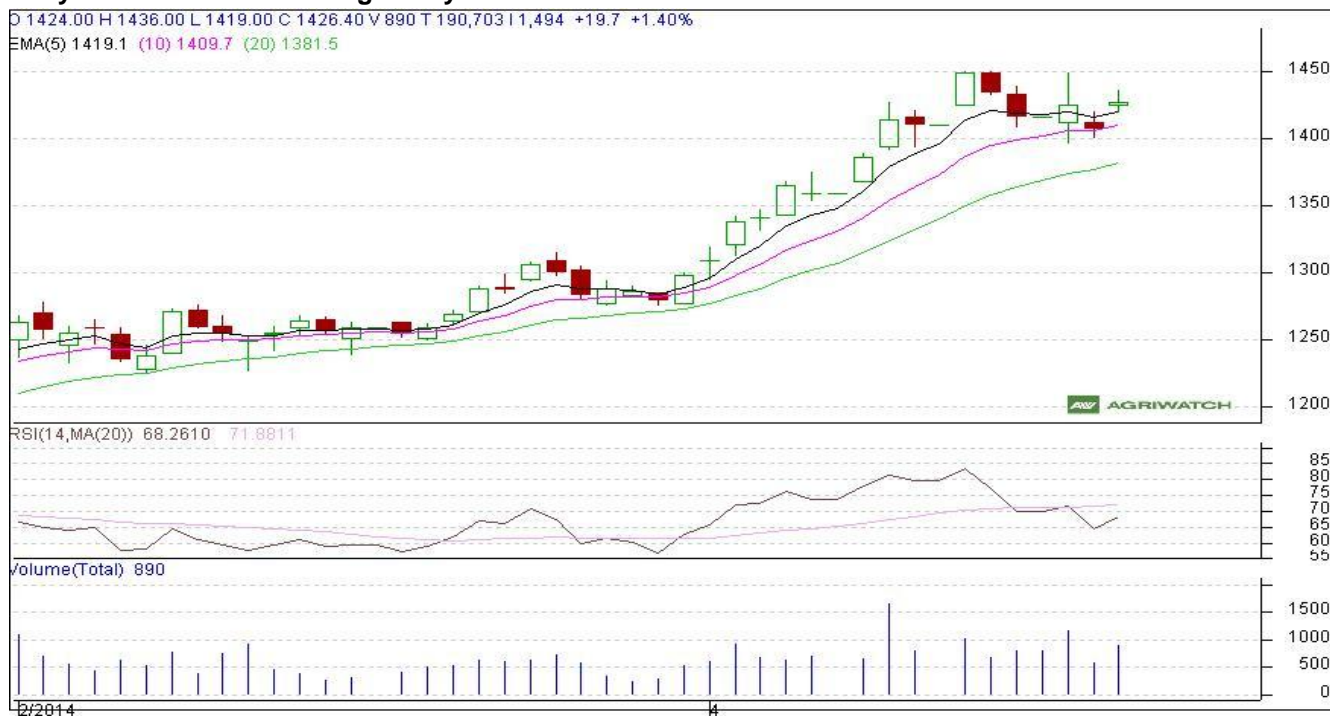
(Source: Agriwatch)

Potato Futures Analysis: (As on 24 April 2014)

	Exchange	Expiry Date	Today's Close Price	Previous Close Price	Net Change	Today's Open Interest	Previous Day Open Interest	Change
POTATO	MCX	30-Apr-14	1426.40	1428.00	-1.60	22410	24345	-1935
POTATO	MCX	30-May-14	1506.30	1502.80	3.50	2250	22710	-20460
POTATO	MCX	30-Jun-14	1547.30	1544.00	3.30	14760	13320	1440
POTATO	MCX	30-Jul-14	1593.30	1550.00	43.30	1425	1410	15

(Source: MCX)

Daily Price Chart of MCX- Agra May Contract:



(Source: Agriwatch)

Candlestick chart pattern reveals bullish sentiment in the market. RSI is moving up in neutral zone in the market indicates prices may go up in the market. Volumes are not supporting the prices. Prices may take support at Rs. 1410/- quintal in short term. Expected Price range may vary in the range of Rs. 1410 - 1450/ quintal.



SFAC
लघु कृषक
कृषि व्यवहार संघ

Small Farmers'
Agribusiness
Consortium



AGRIWATCH

Potato Prices in major markets – Wholesale vs. Retail as on 23 April 2014

Centre	Min.Price	Max.Price	Model. Price	Retail. Price
AHMEDABAD	1100	1500	1300	1700
AMRITSAR	1000	1200	1100	2000
BANGALORE	1600	1800	1700	2500
CHANDIGARH	1200	1400	1300	2000
CHENNAI	2000	2200	2100	2800
DELHI	1260	1600	1430	1800
GANGATOK	1000	1400	1200	1600
GUWAHATI	1500	1600	1550	2000
LUCKNOW	1300	1400	1350	2000
MUMBAI	1400	1700	1600	2000
MUMBAI	1500	1700	1600	2400
NASIK	1400	1800	1610	2000
PATNA	1350	1600	1475	2200
PUNE	1200	1800	1500	2200
RANCHI	1300	1480	1440	1800
SHIMLA	1200	1400	1300	2000

(Source: State Civil Supplies Dept)

Disclaimer

The information contained in this document has been compiled by Agriwatch from sources believed to be reliable, such as NHB, Agmarknet, etc. and directly from traders in mandis. However, users of this data are requested to use the information with due caution and crosscheck with other sources. This document is not, and should not be construed as an offer to sell or buy any commodities. This document may not be reproduced, distributed or published without the express consent of SFAC



SFAC
लघु कृषक
कृषि व्यापार संघ

Small Farmers'
Agribusiness
Consortium



AGRIWATCH