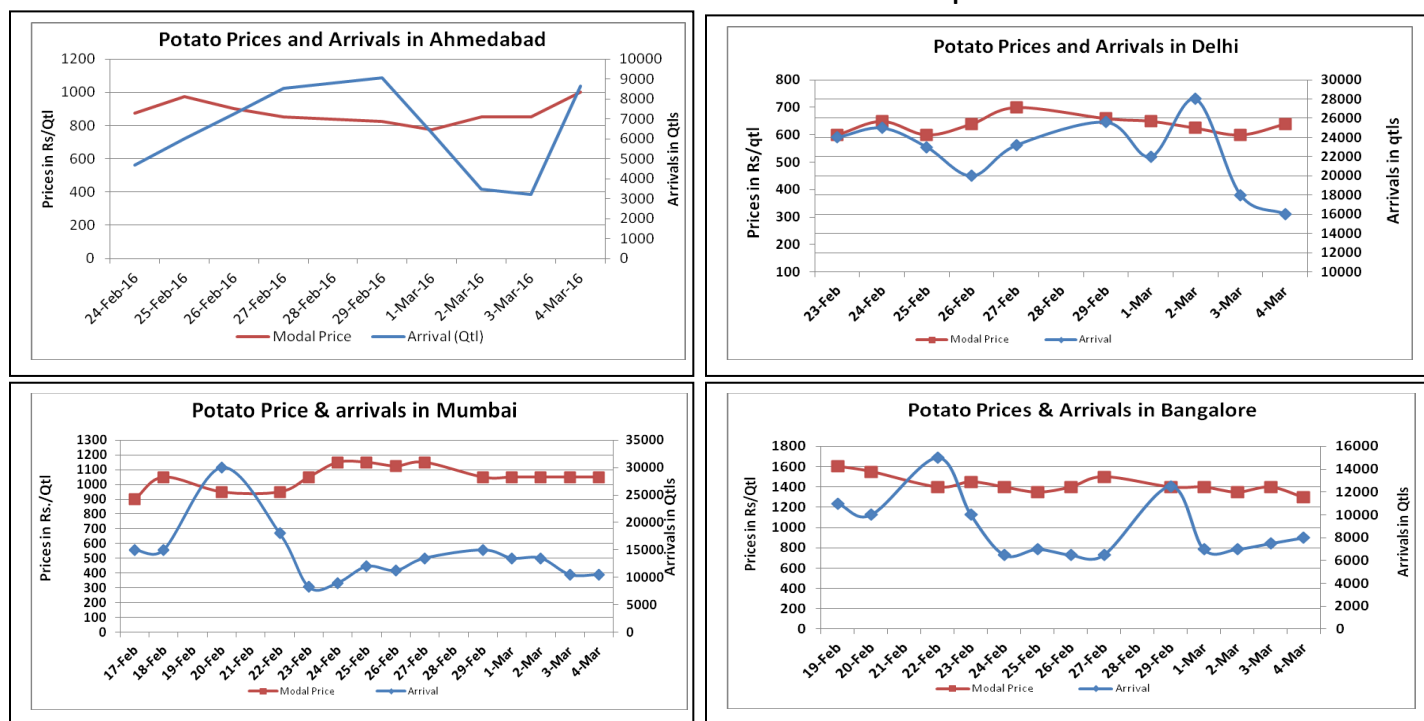


Potato Fundamentals:

- In West Bengal, cold storages capacity utilization is expected to be approximately 20% lesser than total capacity of 62.52 lakh tons.
- In West Bengal, loading in cold storages has started and prices are trading in the range of Rs 900-Rs 1000/ quintal compared to corresponding period of Rs 500- Rs 540/ quintal.
- In U.P, loading has started and in couple of days loading in expected to be full Pace. Loading prices are trading in the range of Rs 900-Rs 1000/ qtl compared to corresponding year Rs 400-Rs 500/ quintal during same period.
- In Delhi, modal prices are trading near Rs 650/ quintal compared to Rs 500/ quintal corresponding period of 2015.

Potato Wholesale Prices & Arrivals trend in Consumption Centers



(Source: AGRIWATCH)

Note: The above graph is made on data collected by Agriwatch through private sources because Agmarknet data are not consistent and lots of gaps in reporting.

Potato Prices & Arrivals in major Mandis as on 04.Mar.2016

Mandis	Farrukhabad	Kanpur	Indore	Bangalore	Tarkeshwar (W.B)	Burdwan (W.B)
Price (Rs./Qtl)	400-550	500-700	-	1100-1500	1040	990
Arrivals (Qtl)	35250	34500	-	8000	-	-

Potato Prices & Arrivals in major Mandis as on 03.Mar.2016

Mandis	Farrukhabad	Kanpur	Indore	Bangalore	Tarkeshwar(W.B)	Burdwan (W.B)
Price (Rs./Qtl)	400-600	500-650	-	1300-1500	1050	970
Arrivals (Qtl)	33000	33750	-	7500	-	-

(Source: Agriwatch)

Potato Prices in major markets – Wholesale vs. Retail as 04 Mar 2016

POTATO-Wholesale and Retail Prices		
Centre	Wholesale Prices (Rs./Qtl)	Retail Prices (Rs./Qtl)
	04.Mar.2016	04.Mar.2016
DELHI	675	1400
LUCKNOW	700	800
AHMEDABAD	1200	1400
BHOPAL	800	1000
MUMBAI	1100	1800
JAIPUR	500	1000
BHUBANESHWAR	1250	1500
KOLKATA	850	1100
HYDERABAD	1800	2000
BENGALURU	1600	2000
TRIVANDPURAM	2200	2500
CHENNAI	800	1400

(Source: Consumer Affairs)

Disclaimer

The information contained in this document has been compiled by Agriwatch from sources believed to be reliable, such as NHB, Agmarknet, etc. and directly from traders in mandis. However, users of this data are requested to use the information with due caution and crosscheck with other sources. This document is not, and should not be construed as an offer to sell or buy any commodities. This document may not be reproduced, distributed or published without the express consent of SFAC