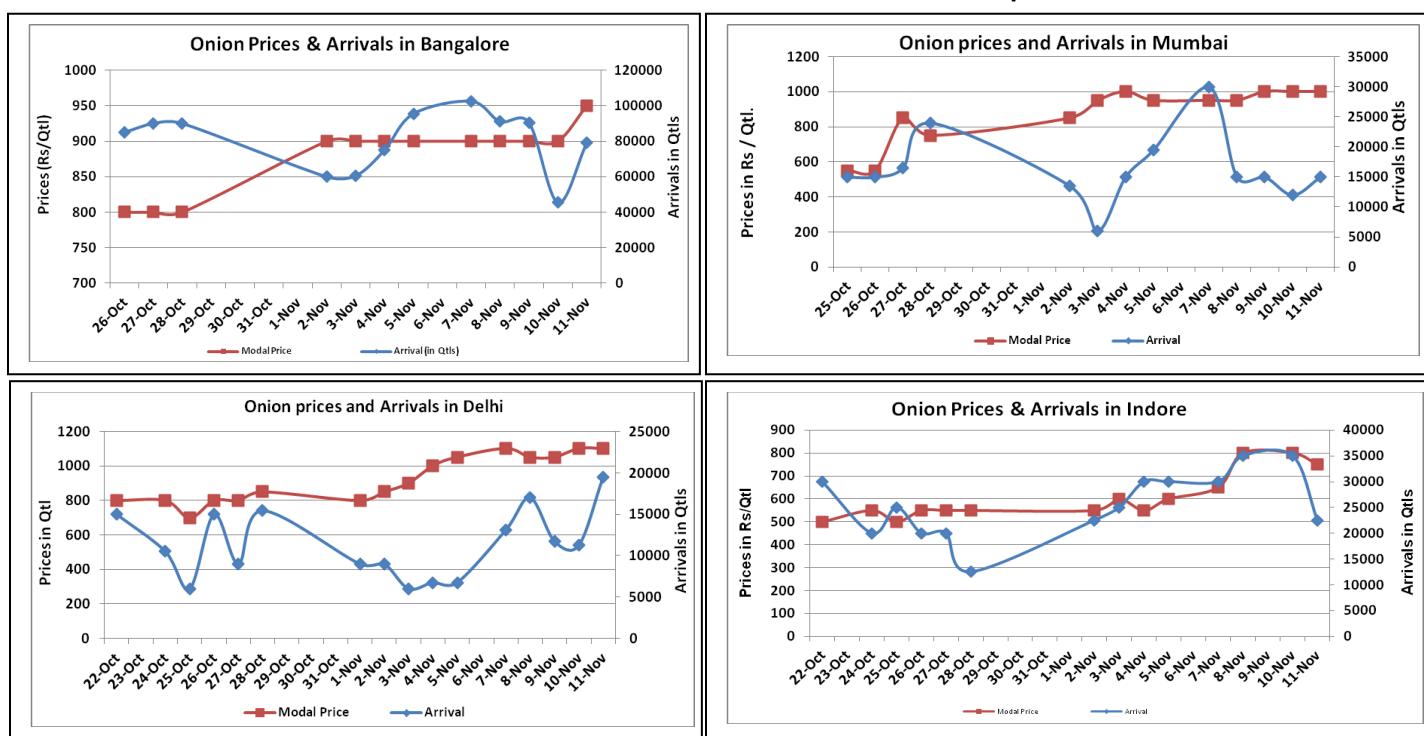


Potato Fundamentals:

- In U.P, by October end approximately 75% potato crop is expected to release from a total storage of approximately 112 lakh ton.
- In West Bengal, approximately 76% of potato has been released so far compared to 75% in corresponding period of 2015. This year total storage was approximately 55 lakh tons.
- In Delhi fresh crop from Punjab has started arriving in market and expected to pick up phase in couple of weeks. In Delhi, modal prices to trade between Rs 800 to Rs 1000/ quintal in coming weeks.
- According to trade sources so far approximately 60%-70% sowing is completed in Punjab. Though harvesting of fresh crop has started

Potato Wholesale Prices & Arrivals trend in Consumption Centers



Note: The above graph is made on data collected by Agriwatch through private sources because Agmarknet data are not consistent and lots of gaps in reporting.

Potato Prices & Arrivals in major Mandis as on 11.Nov.2016

Mandis	Farrukhabad	Khandauli	Indore	Bangalore	Tarkeshwar (W.B)	Burdwan (W.B)
Price (Rs./Qtl)	700-800	900-1100	500-1000	1100-1300	1400	1220
Arrivals (Qtl)	-	45000	6000	12500	-	-

Potato Prices & Arrivals in major Mandis as on 10.Nov.2016

Mandis	Farrukhabad	Khandauli	Indore	Bangalore	Tarkeshwar(W.B)	Burdwan (W.B)
Price (Rs./Qtl)	700-800	800-1150	500-1000	1100-1300	1460	1260
Arrivals (Qtl)	-	45000	10000	15000	-	-

(Source: Agriwatch)

Potato Prices in major markets – Wholesale vs. Retail as 11.Nov.2016

POTATO-Wholesale and Retail Prices		
Centre	Wholesale Prices (Rs./Qtl)	Retail Prices (Rs./Qtl)
	11 Nov 2016	11 Nov 2016
DELHI	950	2900
LUCKNOW	1600	2000
AHMEDABAD	1300	1500
BHOPAL	1500	1800
MUMBAI	1400	2400
JAIPUR	700	1400
BHUBANESHWAR	1320	1600
KOLKATA	1600	2000
HYDERABAD	2400	2600
BENGALURU	NR	NR
TRIVANDPURAM	2700	3200
CHENNAI	1400	2000

(Source: Consumer Affairs)

Disclaimer

The information contained in this document has been compiled by Agriwatch from sources believed to be reliable, such as NHB, Agmarknet, etc. and directly from traders in mandis. However, users of this data are requested to use the information with due caution and crosscheck with other sources. This document is not, and should not be construed as an offer to sell or buy any commodities. This document may not be reproduced, distributed or published without the express consent of SFAC