

Executive Summary:

- In benchmark market Agra (khandauli), prices are expected to trade between Rs 1000-Rs 1100/quintal because release from cold storages has started and expected to pick up pace in couple of weeks.
- All India Rabi estimate is 38.83 million compared to corresponding year 43.04 million tons during same season. Prices are expected to remain firm in coming days in expectation of lesser loading in cold storages amid lower production in U.P and West Bengal.
- In U.P, Rabi sowing is expected to be 5.91 lakh hectares compared to 6.23 lakh hectares in corresponding year of 2015. In U.P, average loading prices in cold storages is Rs 900-Rs 1100/ quintal compared to Rs 400-Rs 500/ quintal in corresponding year of 2015 during same period.
- In U.P, traders are expecting 90% capacity utilization from total capacity of 119.49 Lakh tons. Last year total storage in UP was approximately 115 lakh tons.
- In West Bengal, traders are expecting 81% of loading in cold storages from a total capacity of 68 Lakh tons.
- In Bihar, loading prices were trading in the range of Rs 900-Rs 1000/ quintal compared to corresponding year's Rs 600-Rs 650 / quintal during same time.
- In West Bengal, loading price in cold storages were trading near Rs 1000-Rs 1050/ quintal compared to Rs 450-Rs 530/ quintal in corresponding year of 2015 during same period.

Monthly Wholesale Price Trend in different Producing & Consuming Centers:

Market	Apr. 2016 Avg. Wholesale Price (Rs/Qtl)- (Fresh Potato)	Mar. 2016 Avg. Wholesale Price (Rs/Qtl)- (Fresh Potato)	Apr. 2015 Avg. Wholesale Price (Rs/Qtl)	Absolute Change over Prev. Month (Rs./Qtl)	% Change over Prev. Month	% Change over Prev. Year
Delhi	900	716	372	184	25.70	141.94
Khandauli (Agra)	913	777	302	136	17.50	202.32
Farrukhabad	895	697	389	198	28.41	130.08
Ludhiana	494	458	219	36	7.86	125.57
Kolkata	1458	1248	578	210	16.83	152.25
Jaipur	912	734	434	178	24.25	110.14
Mumbai	1295	1083	731	212	19.58	77.15
Bangalore	1510	1294	975	216	16.69	54.87
Tarkeshwar	1471	1210	500	261	21.57	194.20

(Source: AGRIWATCH)



SFAC
लघु कृषक
कृषि व्यापार संघ

Small Farmers'
Agribusiness
Consortium



AGRIWATCH

The above table shows monthly price trend of potato in wholesale markets. Prices have increased in almost all the markets except Bangalore. Prices are higher because release from cold storage has started in smaller quantity in few markets secondly lower production in U.P and West Bengal.

Maximum prices have increased in Tarkeshwar, Mumbai and Bangalore by 21.57%, 19.58% and 16.69% respectively.

Monthly Retail Price (Rs/Qtl) and arrivals (Tons) trend in different Consuming Centers:

Market	Apr. 2016 Avg. Retail Price (Rs/Qtl)- (Fresh Potato)	Mar. 2016 Avg. Retail Price (Rs/Qtl)- (Fresh Potato)	Previous year Avg. Retail Price- Apr. 2015	% Change in Price Over Prev. Month	% Change in Price Over Prev. year	Total Arrivals in Apr. 2016 (in Qtl)*	Total Arrivals in Mar. 2016 (in Qtl)*	Total Arrivals in Apr. 2015 (in Qtl)*
Bangalore	2000	2000	1900	Unch	5.26	231000	234750	222000
Chennai	1900	1600	1600	18.75	18.75	54300	62120	65700
Delhi	1800	1500	1200	20.00	50.00	577700	614400	579000
Guwahati	1500	1400	800	7.14	87.50	30600	45200	91900
Hyderabad	2000	2000	2200	Unch	-9.09	52560	62530	25450
Mumbai	2000	1900	2000	5.26	Unch	267250	336000	279150
Ranchi	1400	1400	900	Unch	55.56	38850	36300	85050

(Source: #Consumer Affairs,* Agriwatch)

In retail market, prices are either similar to previous month or have increased in few markets. Arrivals have decreased against previous month. Release from cold stores has started in most of the producing regions but in smaller quantity. Prices are expected to remain firm for couple of months.

Average Loading Price Comparison: (Price at which potato is stored by cold owners/stockits)

State	Avg. Loading Price 2016(Rs/Qtl)#	Avg. Loading Price 2015(Rs/Qtl)#	Avg. Loading Price 2014(Rs/Qtl)*	Avg. Loading Price 2013(Rs/Qtl)*
U.P	800- 1000	400-450	952	780
West Bengal	900- 1050	400-450	865	680
Bihar	900- 1000	550-650	998	746

(*Agriwatch Survey, # Agriwatch Research)

Above table gives a comparison of loading prices compared to previous years. This year loading prices are almost double of last year, which indicates shortfall in production and thus rush among traders to stock potato

in cold stores. Cold stores open during May or June based on availability of potato kept in open space by farmers.

Potato Rabi production Estimates for Rabi 2015-16:

State	Rabi Area 2013-14 ('000 Ha)	Yield 2013-14 (MT/Ha)	Production 2013-14 ('000 Tons)	Rabi Area 2014-15 ('000 Ha)	Yield 2014-15 (MT/Ha)	Production 2014-15 ('000 Tons)	Rabi Area 2015-16 ('000 Ha)	Yield 2015-16 (MT/Ha)	Production 2015-16 ('000 Tons)
Uttar Pradesh	565.00	20.25	11441.25	623.01	20.90	13020.91	591.86	18.8	11132.88
West Bengal	385.98	26.25	10131.98	470.47	26.00	12232.22	446.95	23.4	10458.55
Bihar	321.84	15.60	5020.70	312.16	17.00	5306.72	312.00	15.3	4773.6
Gujarat	73.64	30.79	2267.38	98.20	28.13	2762.37	98.00	27.0	2646
Madhya Pradesh	110.00	21.11	2322.10	111.06	21.12	2345.59	140.00	21.0	2940
Punjab	87.24	25.09	2188.85	80.20	25.00	2005.00	82.00	26.0	2132
Karnataka	6.87	13.26	91.10	8.42	13.26	111.65	7.88	13.0	102.44
Haryana	29.97	23.24	696.50	30.11	23.00	692.53	25.00	23.0	575
Tripura	8.72	17.64	153.82	8.28	18.00	149.04	8.00	17.0	136
Tamil Nadu	5.40	21.61	116.69	5.47	21.00	114.87	2.80	21.0	58.8
Total Above States	1594.66		34430.37	1747.38		38740.89	1714.49		34955.27
All India Total Rabi	1812.11		40035.31	1985.66		43045.43	1948.28		38839.18

Notes:

- Above states contribute 88% of area and 90% of Production
- U.P, West Bengal and Bihar states, yield and Area is based on AW from 2013-14 to 2015-16. In rest of the states Area and yield is based on state government data.
- States marked in yellow are based on AW Research
- Yield is based on trade sources.



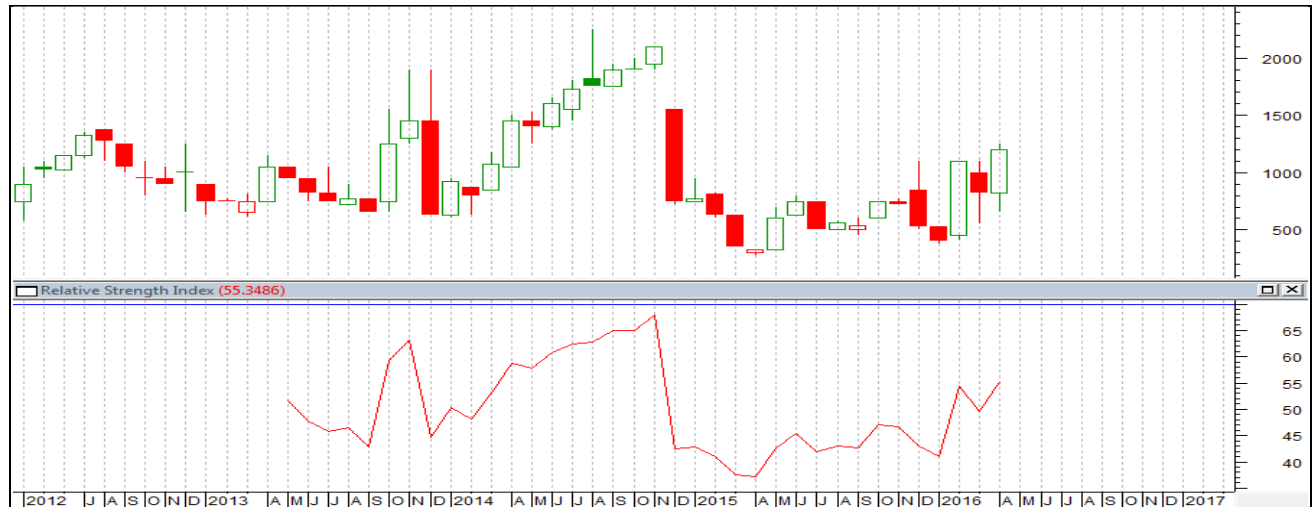
SFAC
लघु कृषक
कृषि व्यापार संघ

Small Farmers'
Agribusiness
Consortium



AGRIWATCH

Technical Analysis-Potato Spot Market (Khandauli, Agra):



(Note: Each bar or “candle” in the chart shows the price movement in a particular month. The blue candle signifies prices increased and red candle signifies prices decreased in that month. The length of the “candle” shows the upper and lower end of the price range for the month)

The above chart shows the monthly price movement of potato for Agra (Khandauli) market. Average Modal prices during April month were Rs 913/quintal. On the higher side prices may find short term resistance at a level of 1500/ quintal. On the lower side prices may find long term support at a level of Rs 900/ quintal. Relative strength Indicator (RSI) oscillator is moving upward in neutral region. Prices are expected to firm in coming days. Overall potato market is expected to be in a range between Rs 1000 –Rs1200/ quintal.

Disclaimer

The information contained in this document has been compiled by Agriwatch from sources believed to be reliable, such as NHB, Agmarknet, etc. and directly from traders in mandis. However, users of this data are requested to use the information with due caution and crosscheck with other sources. This document is not, and should not be construed as an offer to sell or buy any commodities. This document may not be reproduced, distributed or published without the express consent of SFAC.