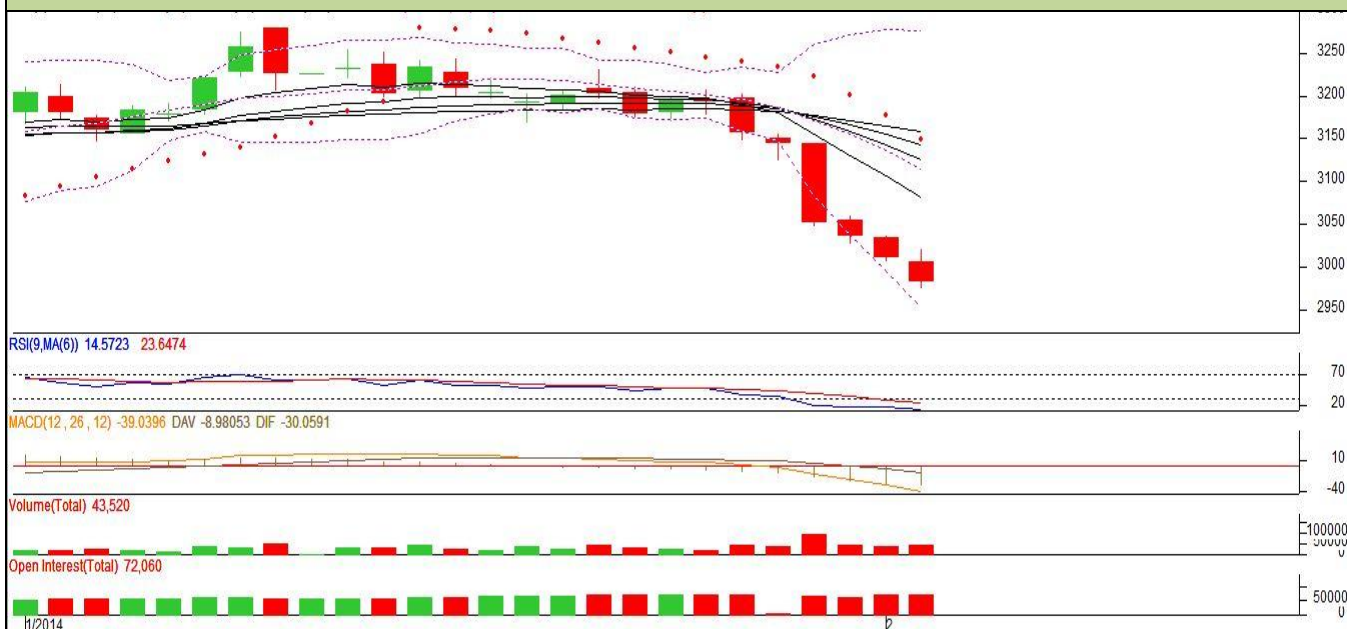


**Commodity: Chana**  
**Contract: April**
**Exchange: NCDEX**  
**Expiry: April 18, 2013**
**Chana**

**Technical Commentary:**

- Candlestick chart shows weak tone in the market.
- RSI is moving down in oversold region favours weak movement.
- Momentum indicator MACD is moving in negative territory supporting bearish tone.
- Prices are facing stiff resistance from short term EMA.

**Strategy: Sell**

Intraday Supports & Resistances			S1	S2	PCP	R1	R2
Chana	NCDEX	April	2900	2851	2983	3038	3061
Pre-Market Intraday Trade Call*			Call	Entry	T1	T2	SL
Chana	NCDEX	April	Sell	<2977	2952	2941	2992

\*Do not carry forward the position until the next day.

**Disclaimer**

The information and opinions contained in the document have been compiled from sources believed to be reliable. The company does not warrant its accuracy, completeness and correctness. Use of data and information contained in this report is at your own risk. This document is not, and should not be construed as, an offer to sell or solicitation to buy any commodities. This document may not be reproduced, distributed or published, in whole or in part, by any recipient hereof for any purpose without prior permission from the Company. IASL and its affiliates and/or their officers, directors and employees may have positions in any commodities mentioned in this document (or in any related investment) and may from time to time add to or dispose of any such commodities (or investment). Please see the detailed disclaimer at <http://www.agriwatch.com/Disclaimer.php> © 20013 Indian Agribusiness Systems Pvt Ltd.