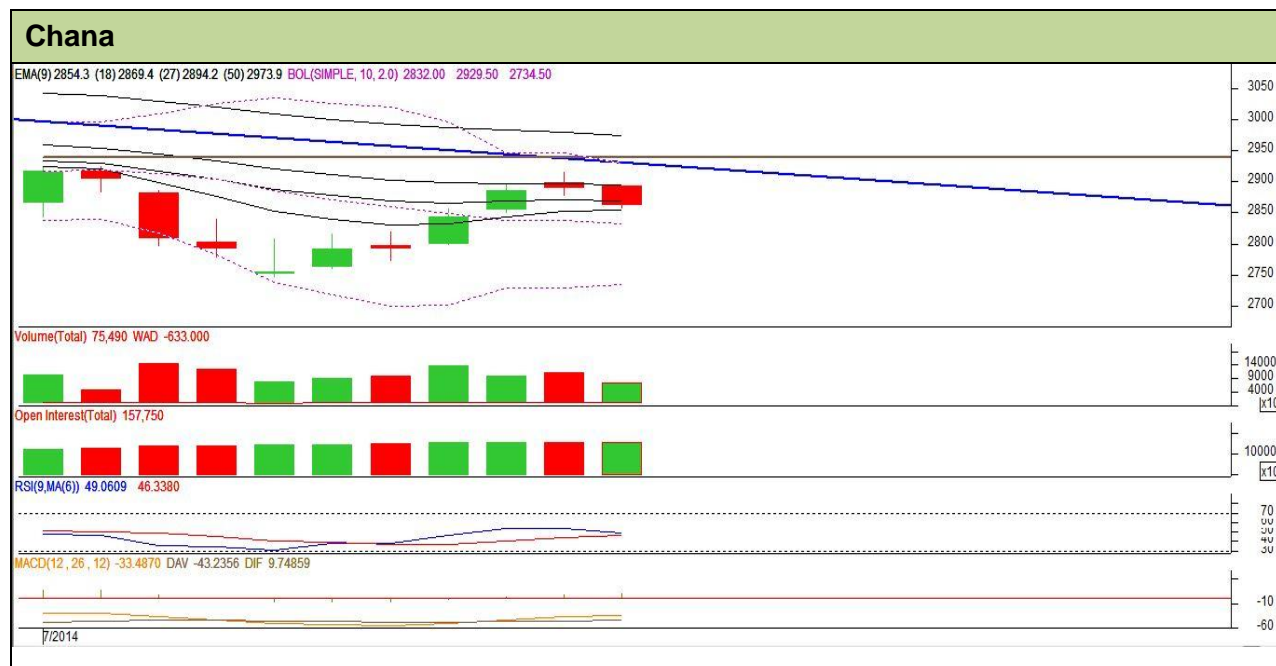


Commodity: Chana
Contract: August
Exchange: NCDEX
Expiry: August 20, 2014

Technical Commentary:

- Candlestick chart shows indecision in market.
- RSI moving down in neutral region favours bears.
- Momentum indicator MACD is in negative territory cautions bulls.
- Prices may face stiff resistance from short term EMA (27).
- And strong support at 2740 levels.

Strategy: Buy

Intraday Supports & Resistances			S1	S2	PCP	R1	R2
Chana	NCDEX	Aug	2800	2750	2862	2978	3000
Pre-Market Intraday Trade Call*			Call	Entry	T1	T2	SL
Chana	NCDEX	Aug	Buy	Above 2858	2840	2832	2868

*Do not carry forward the position until the next day.

Disclaimer

The information and opinions contained in the document have been compiled from sources believed to be reliable. The company does not warrant its accuracy, completeness and correctness. Use of data and information contained in this report is at your own risk. This document is not, and should not be construed as, an offer to sell or solicitation to buy any commodities. This document may not be reproduced, distributed or published, in whole or in part, by any recipient here of for any purpose without prior permission from the Company. IASL and its affiliates and/or their officers, directors and employees may have positions in any commodities mentioned in this document (or in any related investment) and may from time to time add to or dispose of any such commodities (or investment). Please see the detailed disclaimer at <http://www.agriwatch.com/Disclaimer.php> © 2014 Indian Agribusiness Systems Pvt Ltd.