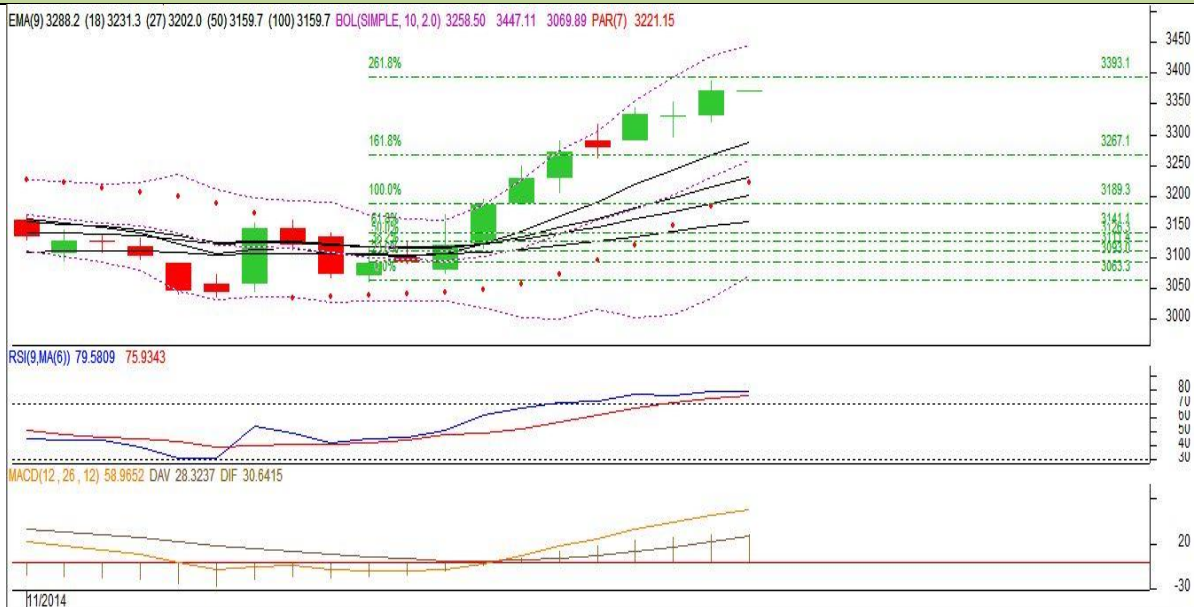


Commodity: Chana
Contract: January
Exchange: NCDEX
Expiry: January 20, 2015
Chana

Technical Commentary:

- Candlestick chart is showing firm tone with high volatility in market.
- RSI is moving up in neutral region favors firm movement.
- MACD is moving flat depicting range-bound movement.
- Prices closed above the short-term EMA.
- We advise traders to Buy.

Strategy: Buy.

Intraday Supports & Resistances			S1	S2	PCP	R1	R2
Chana	NCDEX	Jan.	3200	3150	3371	3450	3500
Pre-Market Intraday Trade Call*			Call	Entry	T1	T2	SL
Chana	NCDEX	Jan.	Buy	Above 3365	3415	3440	3335

*Do not carry forward the position until the next day.

Disclaimer

The information and opinions contained in the document have been compiled from sources believed to be reliable. The company does not warrant its accuracy, completeness and correctness. Use of data and information contained in this report is at your own risk. This document is not, and should not be construed as, an offer to sell or solicitation to buy any commodities. This document may not be reproduced, distributed or published, in whole or in part, by any recipient here of for any purpose without prior permission from the Company. IASL and its affiliates and/or their officers, directors and employees may have positions in any commodities mentioned in this document (or in any related investment) and may from time to time add to or dispose of any such commodities (or investment). Please see the detailed disclaimer at <http://www.agriwatch.com/Disclaimer.php> © 2014 Indian Agribusiness Systems Pvt Ltd.