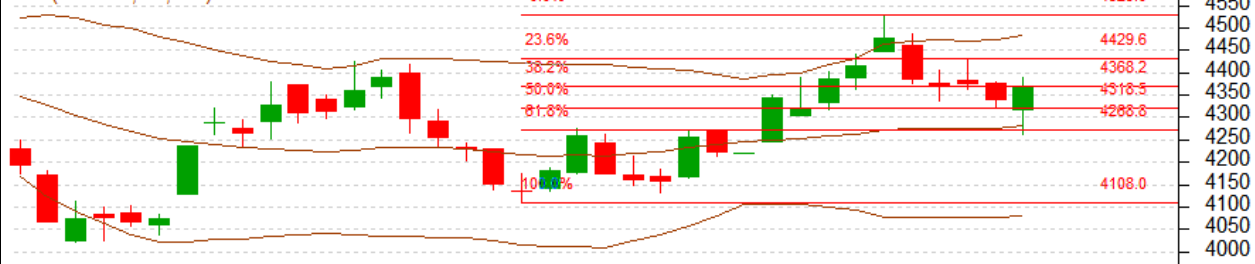


Commodity: Chana
Contract: April
Exchange: NCDEX
Expiry: Apr 20, 2015
Chana
AW AGRIWATCH

Chana Delhi 1604(NCCHAJ6)2016/03/21 - Daily B:4301.00 A:4390.00

O 4314.00 H 4390.00 L 4260.00 C 4366.00 V 62,730 I 36,020 +30 +0.69%

BOL(SIMPLE, 21, 2.0) 4281.14 4482.99 4079.29 0.0%


Technical Commentary:

- Candlestick denotes upward movement in the market.
- RSI is moving slightly down in neutral region.
- Rise in prices and rise in OI and volume indicates long build up.

Strategy: Buy

Intraday Supports & Resistances			S1	S2	PCP	R1	R2
Chana	NCDEX	April	4250	4200	4366	4400	4435
Pre-Market Intraday Trade Call*			Call	Entry	T1	T2	SL
Chana	NCDEX	April	Buy	4320	4344	4371	4304

*Do not carry forward the position until the next day.

Disclaimer

The information and opinions contained in the document have been compiled from sources believed to be reliable. The company does not warrant its accuracy, completeness and correctness. Use of data and information contained in this report is at your own risk. This document is not, and should not be construed as, an offer to sell or solicitation to buy any commodities. This document may not be reproduced, distributed or published, in whole or in part, by any recipient here of for any purpose without prior permission from the Company. IASL and its affiliates and/or their officers, directors and employees may have positions in any commodities mentioned in this document (or in any related investment) and may from time to time add to or dispose of any such commodities (or investment). Please see the detailed disclaimer at <http://www.agriwatch.com/Disclaimer.php> © 2016 Indian Agribusiness Systems Pvt Ltd.