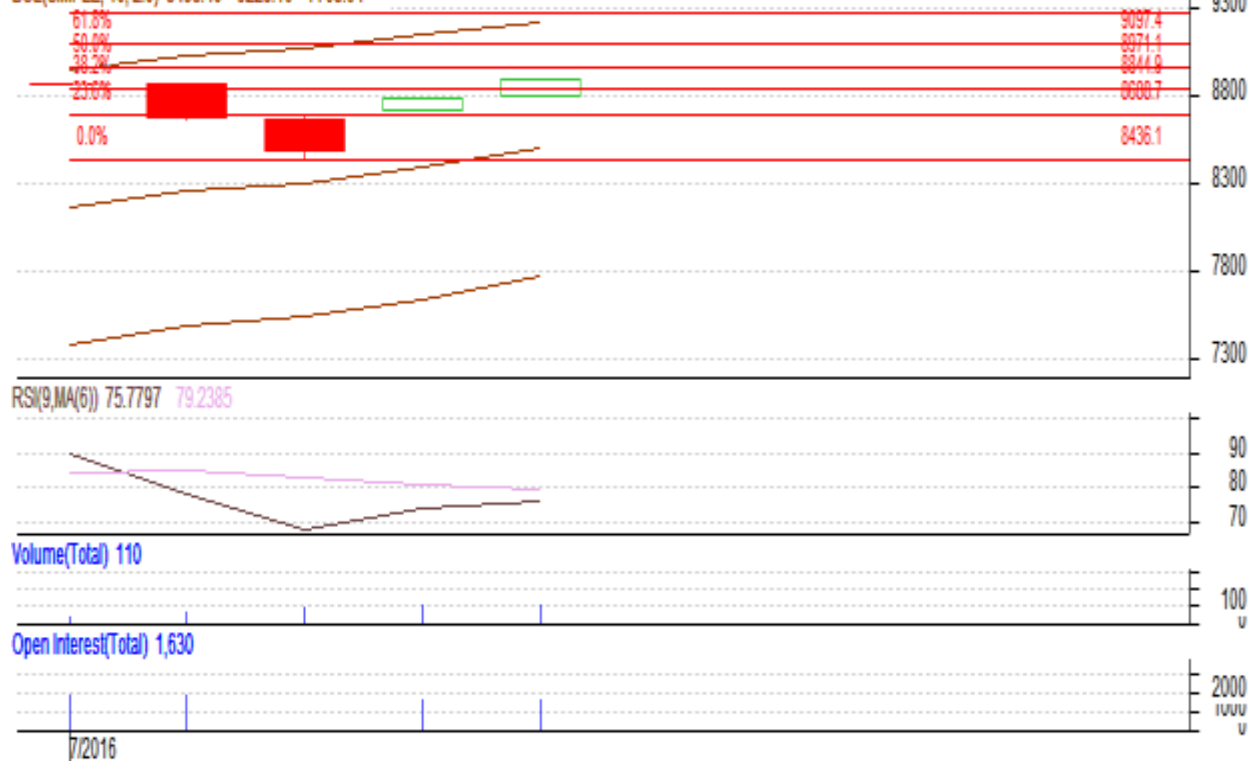


**Commodity: Chana**  
**Contract: Aug**
**Exchange: NCDEX**  
**Expiry: Aug 19, 2016**
**Chana**

Chana Delhi 1608(NCCHAQ6)2016/07/20 - Daily B:8560.00 A:8900.00

O 8788 H 8893 L 8788 C 8893 V 110 I 1,630 +105 +1.19%

BOL(SIMPLE)40,2.0) 8498.40 9228.16 7768.64


**Technical Commentary:**

- Candlesticks are showing slightly upward movement.
- RSI is moving upwards in overbought region.
- Rise in prices and fall in OI and volume indicates weak market.

**Strategy: Stay Away**

Intraday Supports & Resistances			S1	S2	PCP	R1	R2
Chana	NCDEX	August	8700	8450	8893	9100	9300
Pre-Market Intraday Trade Call*			Call	Entry	T1	T2	SL
Chana	NCDEX	August	Wait	-	-	-	-

\*Do not carry forward the position until the next day.

**Disclaimer**

The information and opinions contained in the document have been compiled from sources believed to be reliable. The company does not warrant its accuracy, completeness and correctness. Use of data and information contained in this report is at your own risk. This document is not, and should not be construed as, an offer to sell or solicitation to buy any commodities. This document may not be reproduced, distributed or published, in whole or in part, by any recipient here of for any purpose without prior permission from the Company. IASL and its affiliates and/or their officers, directors and employees may have positions in any commodities mentioned in this document (or in any related investment) and may from time to time add to or dispose of any such commodities (or investment). Please see the detailed disclaimer at <http://www.agriwatch.com/Disclaimer.php> © 2016 Indian Agribusiness Systems Pvt Ltd.