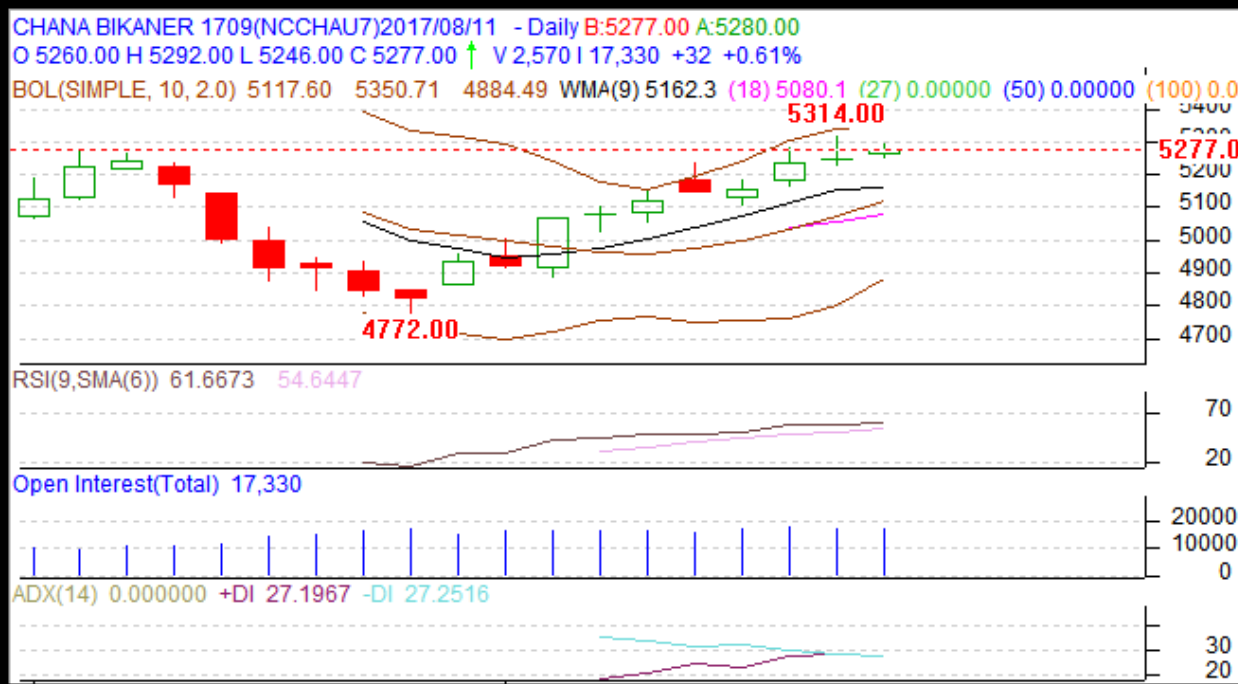


Commodity: Chana
Sept Contract-2017
Exchange: NCDEX
Expiry: Sept 20
Chana

Technical Commentary:

- Rise in prices and increase in Open Interest and volume indicates firm market.
- RSI is moving up in neutral region, hints caution to the bears.
- Prices closed above 9 and 18 days EMAs

Strategy: Buy

Intraday Supports & Resistances			S1	S2	PCP	R1	R2
Chana	NCDEX	Sept.	5200	5100	5245	5350	5500
Pre-Market Intraday Trade Call*			Call	Entry	T1	T2	SL
Chana	NCDEX	Sept.	Buy above	5250	5275	5300	5235

*Do not carry forward the position until the next day.

Disclaimer

The information and opinions contained in the document have been compiled from sources believed to be reliable. The company does not warrant its accuracy, completeness and correctness. Use of data and information contained in this report is at your own risk. This document is not, and should not be construed as, an offer to sell or solicitation to buy any commodities. This document may not be reproduced, distributed or published, in whole or in part, by any recipient here of for any purpose without prior permission from the Company. IASL and its affiliates and/or their officers, directors and employees may have positions in any commodities mentioned in this document (or in any related investment) and may from time to time add to or dispose of any such commodities (or investment). Please see the detailed disclaimer at <http://www.agriwatch.com/Disclaimer.php> © 2017 Indian Agribusiness Systems Pvt Ltd.