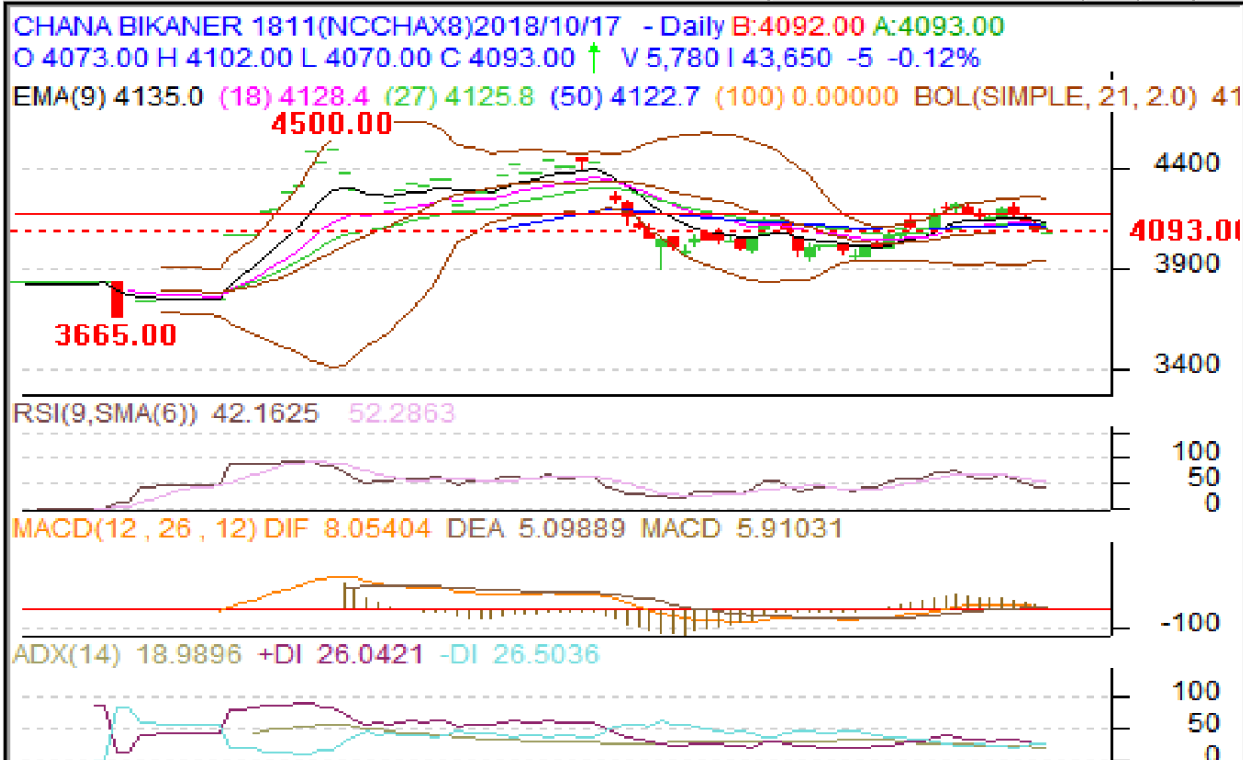


Commodity: Chana
Nov Contract-2018
Exchange: NCDEX
Expiry: Nov 20th 2018
Chana

Technical Commentary:

- Decrease in price and open interest indicates weak market.
- RSI is moving down in neutral region hints caution to the bulls.
- Prices closed below 9 and 18 days EMAs.

Strategy: Buy above

Intraday Supports & Resistances			S1	S2	PCP	R1	R2
Chana	NCDEX	Nov	4070	4010	4098	4185	4237
Pre-Market Intraday Trade Call*			Call	Entry	T1	T2	SL
Chana	NCDEX	Nov	Buy above	4080	4120	4130	4056

*Do not carry forward the position until the next day.

Disclaimer

The information and opinions contained in the document have been compiled from sources believed to be reliable. The company does not warrant its accuracy, completeness and correctness. Use of data and information contained in this report is at your own risk. This document is not, and should not be construed as, an offer to sell or solicitation to buy any commodities. This document may not be reproduced, distributed or published, in whole or in part, by any recipient hereof for any purpose without prior permission from the Company. IASL and its affiliates and/or their officers, directors and employees may have positions in any commodities mentioned in this document (or in any related investment) and may from time to time add to or dispose of any such commodities (or investment). Please see the detailed disclaimer at <http://www.agriwatch.com/Disclaimer.php> © 2018 Indian Agribusiness Systems Ltd.