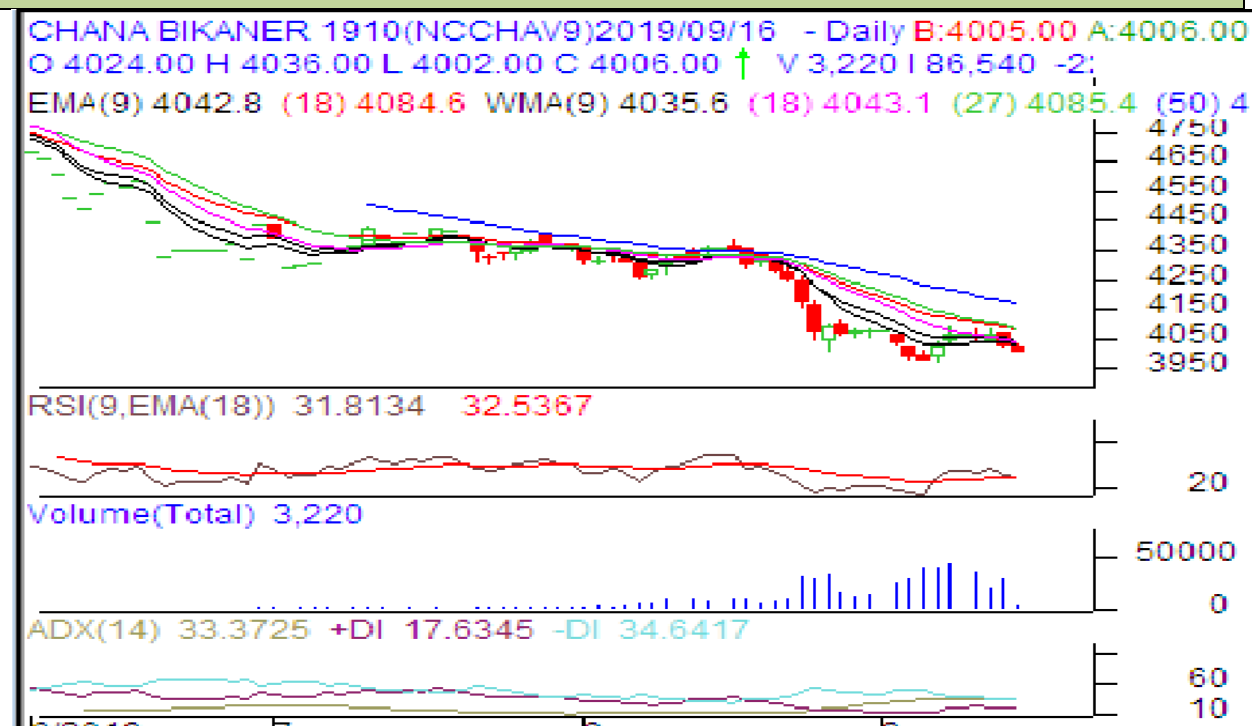




Commodity: Chana  
Oct, Contract-2019

Exchange: NCDEX  
Expiry: Oct, 20th 2019

## Chana



### Technical Commentary:

- Decrease in price and open interest indicate weak market.
- RSI is moving down in neutral region hints caution to the bulls.
- Prices closed below 9 and 18 days EMAs.

### Strategy: **Sell Below**

Intraday Supports & Resistances			S1	S2	PCP	R1	R2
Chana	NCDEX	Oct	3990	3975	4028	4055	4150
Pre-Market Intraday Trade Call*			Call	Entry	T1	T2	SL
Chana	NCDEX	Oct	<b>Sell Below</b>	4035	4000	3990	4052

\*Do not carry forward the position until the next day.

### Disclaimer

The information and opinions contained in the document have been compiled from sources believed to be reliable. The company does not warrant its accuracy, completeness and correctness. Use of data and information contained in this report is at your own risk. This document is not, and should not be construed as, an offer to sell or solicitation to buy any commodities. This document may not be reproduced, distributed or published, in whole or in part, by any recipient hereof for any purpose without prior permission from the Company. IASL and its affiliates and/or their officers, directors and employees may have positions in any commodities mentioned in this document (or in any related investment) and may from time to time add to or dispose of any such commodities (or investment). Please see the detailed disclaimer at <http://www.agriwatch.com/Disclaimer.php> © 2019 Indian Agribusiness Systems Ltd.