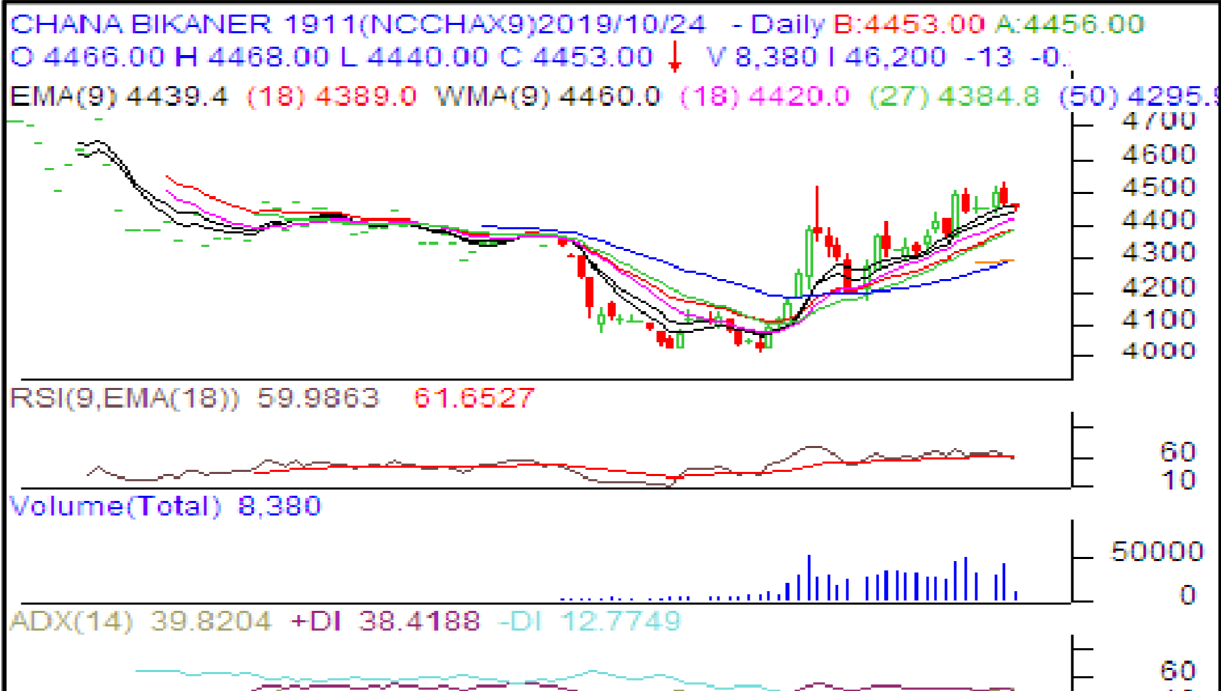




Commodity: Chana
Nov, Contract-2019

Exchange: NCDEX
Expiry: Nov, 20th 2019

Chana



Technical Commentary:

- Decrease in price and open interest indicate weak market.
- RSI is moving down in neutral region hints caution to the bulls.
- Prices closed above 9 and 18 days EMAs.

Strategy: Sell below

Intraday Supports & Resistances			S1	S2	PCP	R1	R2
Chana	NCDEX	Nov	4430	4375	4466	4519	4550
Pre-Market Intraday Trade Call*			Call	Entry	T1	T2	SL
Chana	NCDEX	Nov	Sell below	4470	4440	4430	4488

*Do not carry forward the position until the next day.

Disclaimer

The information and opinions contained in the document have been compiled from sources believed to be reliable. The company does not warrant its accuracy, completeness and correctness. Use of data and information contained in this report is at your own risk. This document is not, and should not be construed as, an offer to sell or solicitation to buy any commodities. This document may not be reproduced, distributed or published, in whole or in part, by any recipient hereof for any purpose without prior permission from the Company. IASL and its affiliates and/or their officers, directors and employees may have positions in any commodities mentioned in this document (or in any related investment) and may from time to time add to or dispose of any such commodities (or investment). Please see the detailed disclaimer at <http://www.agriwatch.com/Disclaimer.php> © 2019 Indian Agribusiness Systems Ltd.