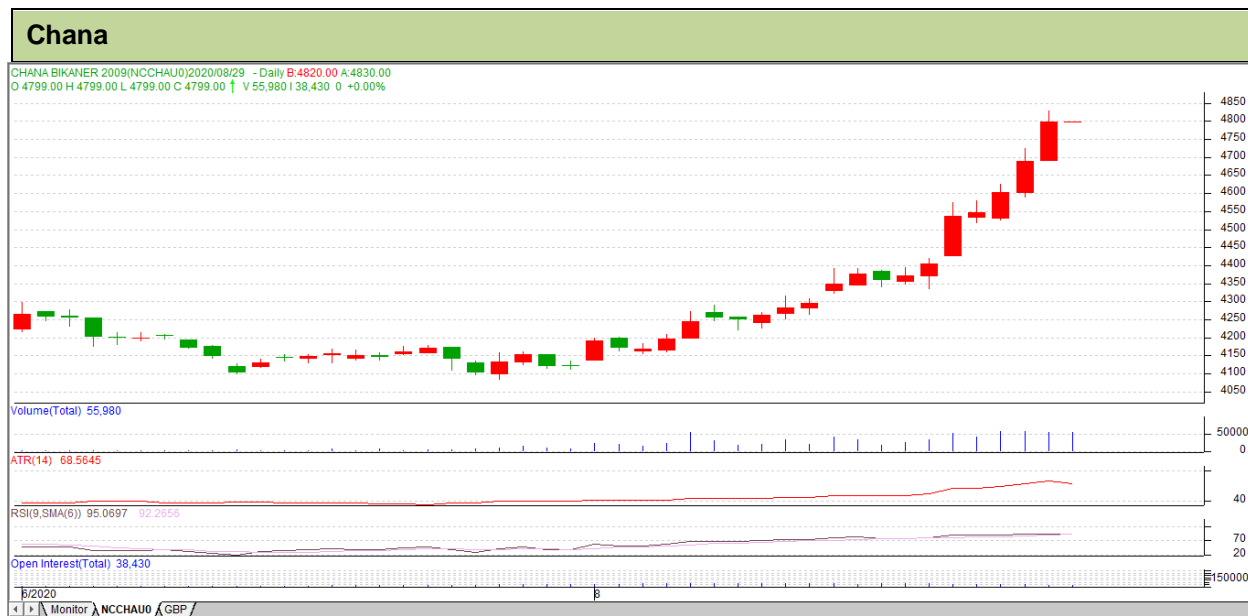


**Commodity: Chana**  
**Sep Contract-2020**
**Exchange: NCDEX**  
**Expiry: Sep 20<sup>th</sup> 2020**

**Technical Commentary:**

- Increase in price and decrease in open interest indicate short covering.
- Candle stick pattern shows bullish movement in the market.
- RSI is moving in Overbot region.
- Prices closed below 9 and 18 days EMAs.

**Strategy: Sell on rise.**

Intraday Supports & Resistances			S1	S2	PCP	R1	R2
Chana	NCDEX	Sep	4607	4539	4690	4764	4832
Pre-Market Intraday Trade Call*			Call	Entry	T1	T2	SL
Chana	NCDEX	Sep	<b>SELL</b>	4690	4680	4675	4696

\*Do not carry forward the position until the next day.

**Disclaimer**

The information and opinions contained in the document have been compiled from sources believed to be reliable. The company does not warrant its accuracy, completeness and correctness. Use of data and information contained in this report is at your own risk. This document is not, and should not be construed as, an offer to sell or solicitation to buy any commodities. This document may not be reproduced, distributed or published, in whole or in part, by any recipient hereof for any purpose without prior permission from the Company. IASL and its affiliates and/or their officers, directors and employees may have positions in any commodities mentioned in this document (or in any related investment) and may from time to time add to or dispose of any such commodities (or investment). Please see the detailed disclaimer at <http://www.agriwatch.com/Disclaimer.php> © 2020 Indian Agribusiness Systems Pvt Ltd.