



---

# Rice Weekly Research Report

---

---

## Contents

- ❖ Outlook and Review
- ❖ Weekly Price Change
- ❖ Weekly Rice Export
- ❖ Progressive Procurement
- ❖ FOB-1121 Steam
- ❖ International Rice Market Summary
- ❖ IGC Balance Sheet
- ❖ CBOT Trend

***Outlook and Review:***

- **Tamil Nadu is receiving very good monsoon rains this year while the water level in the dams reservoirs** has also risen. The state agriculture department is confident of increasing the average paddy yield and total yields to a new record level this year. There is widespread paddy cultivation in Deltai districts of Tamil Nadu. The Mettur Dam has sufficient water stock. There is a good arrangement of irrigation through canals in the Cauvery delta. This time after a gap of eight years, water was released from Mettur Dam on the due date in June.
- **During the current year in Tamil Nadu, the target of paddy area has been set of 3.50 lakh acres and 6.07** lakh tonnes of paddy in the Kuruva for this (Kharif) season. So far, paddy cultivation has been completed on 2.17 lakh acres there. The Cauvery Delta consists of seven districts comprising Thanjavur, Thiruvarur, Mayiladuthurai, the entire part of Nagapattinam and some parts of Gichi, Cuddalore and Ariyalur districts. In the Kuruva (Kharif) season last year, there was paddy cultivation area of 2.90 lakh acres and 4.99 lakh tonnes of paddy was produced. The planting season of Kuruva paddy usually starts from June and continues till August. Sometimes, transplanting continues till some time beyond this. But this time it is likely to be finished by the end of July.
- **Locust outbreaks in India have continued for the past few months. According to the Food and Agriculture Organization (FAO)**, a subordinate agency of the United Nations, this time the most severe and dangerous outbreak of locusts is being observed in India in the last 26 years and it is suggested to be on 'high alert' during the next four weeks. Rajasthan is the worst affected in the country. Other affected states include Madhya Pradesh, Gujarat, Punjab, Maharashtra, Uttar Pradesh, Chhattisgarh, Bihar and Haryana.
- **There is no doubt that tremendous efforts are being made by the Central and State Governments** to stop the locust attack and the outbreak and spread. In many areas, pesticides are being sprayed with the help of drones and at some places Bell helicopters are also being used for this. Indian Air Force has deployed choppers for Jodhpur. There is a spread of locust contingent up to 4 square km in sub division of Jodhpur. For the first time, two MI-G-17 helicopters have been deployed there to control and spray it.
- **According to Indian Prime Minister, around 80 Cr. BPL people would be benefitted under PMGKAY** which has already started from 1 July. Around 200 lakh tons of food grains (either wheat or rice) and 9.78 lakh tons of gram will be distributed under this scheme.
- **As per statement given by Federation of Indian Export Organizations (FIEO), India's exports likely to dip** 10-12 per cent in 2020-21 due to COVID-19. However Agriwatch expect that rice export from India could recover in coming months as our price is competitive with other neighboring countries and demand of Indian rice is also coming from many African as well middle east

### State wise Wholesale Prices Weekly Analysis for Rice First week July, 2020

West Bengal	2842.58	2828.49	2765.15	0.5	2.8
Jharkhand	2533.33	2492.62	3863.07	1.63	-34.42
Karnataka	2819.97	2787.47	3855.27	1.17	-26.85
Kerala	3557.95	3560.76	3449.36	-0.08	3.15
Odisha	2866.49	2699.17	2691.11	6.2	6.52
Gujarat	4200	4200	3195.4	0	31.44
Uttar Pradesh	2837.8	2589.67	2505.31	9.58	13.27
Maharashtra	3712.3	3573.2	4191.37	3.89	-11.43
Tripura	2897.17	3396.76	2858.06	-14.71	1.37
Average	3140.84	3125.35	3569.04		

Prices in Rs/Quintal

Duration	Trend	Average Price Range	Reason
02 <sup>nd</sup> Week of July, 2020	Steady to Firm	Rs.3300-3900/Quintal	If the Lockdown duration will increase in that case, demand of rice increases which support the prices at current level.

### Weekly Rice Price Change in Delhi Market (Figure: in Rs. /Quintal)

Rice Price	Grade	Change*	03-Jul-20	02-Jul-20	26-Jun-20	03-Jun-20	03-Jul-19
Chirala(A.P)	BPT(Raw)	-100	3200	3350	3300	3500	3500
Jharkhand(Ranchi)	Coarse	200	3100	3200	2900	3000	3100
Ernakulam(Kerala)	Jaya	0	3500	3600	3500	3500	3500
Divi( A.P)	BPT(Steam)	0	3500	3450	3500	3500	3400
Visakhapatnam	HMT(Raw)	100	4700	4400	4600	4450	4200
Nandyal	Sona Fine	100	4700	4600	4600	4500	4300
Barasat(W.B)	Masuri	-100	3100	3200	3200	3300	3400
Dibrugarh	Common	-100	2900	3300	3000	3300	3600
Jhargram(W.B)	IR-36	3100	2900	2800	2900	2700	3000
Jhargram(W.B)	IR-36	-100	2800	2900	2800	2900	2900
Karnal	Sarbati Steam	0	4500	4100	4500	4300	4100
Bangarpet(Kar)	Sugandh Sela	0	4400	4300	4400	4200	4000

### Comparative Rice Variety Prices of Delhi (Naya Bazaar) in Rs./Quintal

Variety	Today	Week Ago	Month Ago	Year ago	% Change From last week	% Change from last Month	% Change from last Year
	03-Jul-20	27-Jun-20	03-Jun-20	03-Jul-19			
1121 Steam	7200	7100	6400	8000	1.41	12.50	-10.00
1121 Sella	5600	5400	5300	7400	3.70	5.66	-24.32
1121 Raw	7100	7200	6400	8100	-1.39	10.94	-12.35
Basmati Raw	8500	8500	7500	9400	0.00	13.33	-9.57
1509 Steam Wand New	6200	5900	5800	7600	5.08	6.90	-18.42
Sugandh Steam	5100	5000	4800	6300	2.00	6.25	-19.05
Sharbati Raw	4300	4200	4000	4400	2.38	7.50	-2.27
Pusa Raw Wand	6000	6000	5000	5800	0.00	20.00	3.45
Parmal Sella	3700	3600	3500	3050	2.78	5.71	21.31

### Weekly Paddy Arrival in Major Mandi:

Paddy Arrivals (In Quintal)	Grade	Change	Current Week	Last Week	Source
Kurnool	All Paddy	-10	10	20	APMC
Srikakulam	All Paddy	5	18	13	APMC
West Godavari	All Paddy	--	22	NA	APMC
Burdwan(W.B)	All Paddy	NA	12	NA	APMC
Delhi	All Paddy	--	66	NA	APMC
Amritsar	All Paddy	--	43	--	APMC
Karnal	All Paddy	--	54	--	APMC

\*Difference between current and previous week price

### State wise Progressive Procurement As on 29.06.2020

State	Procurement(in Lakh Tons) 2019-20	2018-19
AP	53.18	32.25
Telangana	74.64	36.14
Assam	1.28	0.52
Bihar	13.41	9.28
Chhattisgarh	46.56	40.80
Haryana	43.03	39.09
Jharkhand	2.55	1.53
Kerala	4.75	4.07
M.P	17.40	13.95

Maharashtra	10.14	4.25
Odisha	47.01	34.48
Punjab	108.76	113.34
Tamilnadu	17.27	11.48
U.P	37.90	32.33
Uttrakhand	6.81	4.62
West Bengal	15.15	16.54
<b>Total</b>	<b>500.75</b>	<b>395.05</b>

All-India progressive procurement of Rice as on 29.06.2020 for Kharif Marketing Season (KMS) 2019-20 is 500.75lakh tons against the procurement of 395.05 lakh tonnes in the corresponding period of last year.

### IGC Balance Sheet:

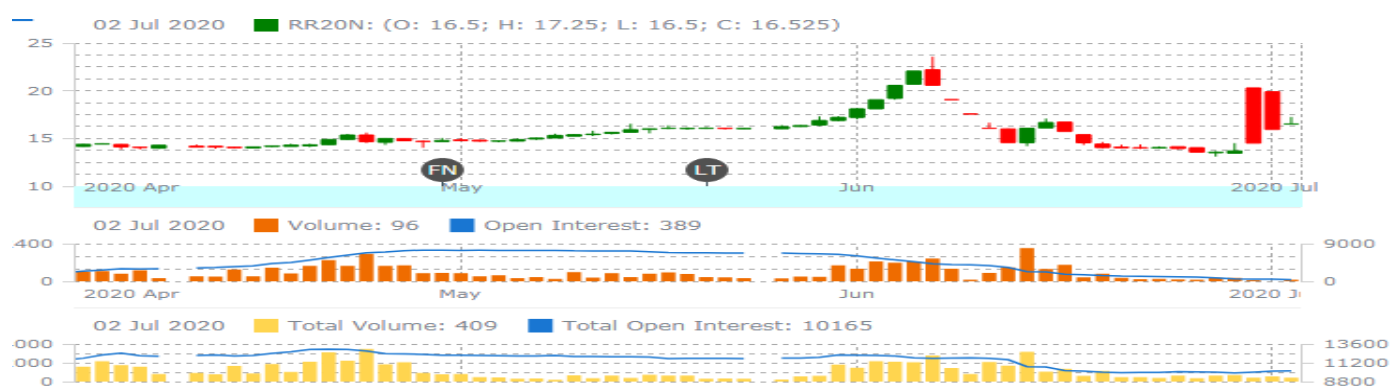
Attributes ( Fig in Million Tons)	2015-16	2016-17	2017-18 Estimate	(2019-20) Forecast. 28.05.2020	(2020-21) Projection. 25.06.2020
Production	475	487	490	506	505
Trade	40	48	48	44	44
Consumption	475	488	494	500	501
Carryover stocks	164	174	176	182	180
Y-O-Y change	9	9	3	-	4
Major Exporters	31	39	42	46	46

Note: Major exporters are India, Pakistan, Thailand, Vietnam, and United States

**IGC Rice Balance sheet Highlights:** With few changes to the 2019-20 global rice supply and demand balance sheet from previously, end-season carryovers are maintained at 176 million tons, a record level on gains in China and leading exporters. The 2020/21 production outlook is trimmed m/m, with the net reduction in total supplies leading to a modestly lower figure for inventories, placed at 180 million tons, albeit still a new high. The projection for trade in 2021 is unchanged m/m, at 44 million tons (+4% y/y).

### Rice Price Trend @ CBOT Jul- 2020, Rough Rice)

(Prices in US\$/hundredweight)





### Market Analysis

**The CBOT Jul-20** month rough chart for rice indicates steady to weak tone from last month. We expect market to hover in the range of USD 12.60-13.90 hundred weights in coming sessions.

### Price Projection (International-CBOT)

Duration	Trend	Price Range
02 <sup>nd</sup> Week of Jul-2020	Steady	USD/ Hundred Weight 11.60-18.50

#### Disclaimer

The information and opinions contained in the document have been compiled from sources believed to be reliable. The company does not warrant its accuracy, completeness and correctness. Use of data and information contained in this report is at your own risk. This document is not, and should not be construed as, an offer to sell or solicitation to buy any commodities. This document may not be reproduced, distributed or published, in whole or in part, by any recipient hereof for any purpose without prior permission from the Company, IASL and its affiliates and/or their officers, directors and employees may have positions in any commodities mentioned in this document (or in any related investment) and may from time to time add to or dispose of any such commodities (or investment). Please see the detailed disclaimer at <http://www.agriwatch.com/disclaimer.php> © 2020 Indian Agribusiness Systems Ltd.