



---

# Rice Weekly Research Report

---

---

## Contents

- ❖ Outlook and Review
- ❖ Weekly Price Change
- ❖ Weekly Rice Export
- ❖ Progressive Procurement
- ❖ FOB-1121 Steam
- ❖ International Rice Market Summary
- ❖ IGC Balance Sheet
- ❖ CBOT Trend

**Outlook and Review:**

- India's export price of 5% broken parboiled variety rose to USD 383-USD 389 per tonne this week against USD 382-USD 387 previous week, even as exporters struggling to fulfill orders due to limited stocks in pipeline and shortage of containers and workers at the Kakinada which is one of the country's biggest rice handling port. Demand is huge for Indian rice due to lower prices, but exports are getting affected by floods and the corona virus outbreak in major exporting states.
- As per data received by Bangladesh Agriculture Department, Floods in Bangladesh damaged rice worth 363.34 billion taka (USD 4.29 billion) on around 100,000 hectares.
- Bangladesh, the world's third biggest rice producer, often relies on imports to cope with shortages caused by floods and droughts. This year it is expected that Bangladesh would import rice from India which will support price in coming months.
- Vietnam's 5% broken rice rates were unchanged at USD 480-USD 490 per tonne this week, its highest since late 2011. Supplies are getting thin day by day due to strong domestic buying and recently summer-autumn harvest has ended. The return of the novel corona virus to Vietnam late last month has also prompted the hoarding of rice domestically. It is expected that prices to stay elevated for the next few months until a new harvest in October.
- Supply concerns also pushed Thailand's benchmark 5% broken rice prices up to USD 480-500, its highest since July 2, from USD 465-USD 500 last week, It is expected that rice harvest in the provinces will not be so great which would like to push the price up in coming months.
- According to the sowing data released by the Ministry of Agriculture, till August 21, a record paddy was sown in the country. Monsoon in the country is also 6% above normal which helped to boost the paddy sowing. Paddy sowing grew to 10.5 lakh hectares in Telangana, 6 lakh hectares in Bihar, Jharkhand and Madhya Pradesh. Apart from this, 4.5 in West Bengal, 3.16 in Orissa and 2.18 lakh hectare in Karnataka were also under paddy. On the other hand, area under paddy in Punjab has decreased by 1.78%, till now. Total paddy has been sown in 37.8 million hectares in the country, which is 12% more than last year.
- Due to the incessant torrential rains and floods in the Krishna and Godavari rivers, some districts of Andhra Pradesh are likely to suffer heavy damage to kharif crops. According to preliminary estimates, crops have been ruined in about 23 thousand hectares. Production of food grains in the state may decline by 5-10 percent. Flood-rains in six districts — Kurnool, West Godavari, Nellore, East Godavari, Krishna and Visakhapatnam - have reported specific damage to food and commercial crops. According to the initial report by local media, paddy in 6065 hectares, groundnut in 1200 hectares, arhar in 515 hectares, urad in 360 hectares, maize in 6735 hectares, millet in 125 hectares and other kharif crops in 47 hectares were damaged.

**State wise Wholesale Prices Weekly Analysis for Rice third week August, 2020**

State	Prices 16-22 Aug 2020	Prices 10-16 Aug 2020	Prices 01-08 Aug 2019	% Change(Over Previous Week)	% Change(Over Previous Year)
Andhra Pradesh			4150	---	---
Assam			3255.76	---	---
Karnataka	3431.74	3406.03	3877.38	0.75	-11.49
Maharashtra	2200	4200	4713.77	-47.62	-53.33
Tripura	2993.31	3003.72	2913.85	-0.35	2.73
Uttar Pradesh	2658.58	2691.23	2504.33	-1.21	6.16
Mizoram			3500	---	---
Odisha	2657.83	2630.5	2623.2	1.04	1.32
Uttrakhand			2708.73	---	---
West Bengal	2843.94	3097.55	2769.45	-8.19	2.69
Gujarat	4219.8	4200	3135.3	0.47	34.59
Kerala	3477.65	3485.96	3402.37	-0.24	2.21
Nagaland			7000	---	---
Jharkhand		2533.33	3864.52	---	---
Manipur			4471.22	---	---
Meghalaya			3800	---	---
Average	3060.36	3249.81	3668.12		

\*Report Generation: As per the data reported by APMCs

Prices in Rs/Quintal

Duration	Trend	Average Price Range	Reason
01 <sup>st</sup> Week of Sep, 2020	Steady to Firm	Rs.3300-3900/Quintal	Overseas demand of Indian rice due to competitive price supports the price at current level.

**Weekly Rice Price Change in Delhi Market (Figure: in Rs. /Quintal)**

Rice Price	Grade	Change*	08-Aug-20	07-Aug-20	01-Aug-20	08-Jul-20	08-Aug-19
Chirala(A.P)	BPT(Raw)	0	3200	3200	3200	3200	2900
Jharkhand(Ranchi)	Coarse	100	3100	3200	3000	3100	2800
Ernakulam(Kerala)	Jaya	-100	3300	3400	3400	3500	3200
Divi( A.P)	BPT(Steam)	0	3500	3450	3500	3500	3100
Visakhapatnam	HMT(Raw)	-200	4200	4400	4400	4700	4200
Nandyal	Sona Fine	100	4400	4600	4300	4700	4300
Barasat(W.B)	Masuri	100	3500	3200	3400	3100	2800
Dibrugarh	Common	0	3200	3300	3200	2900	2600
Jhargram(W.B)	IR-36	100	2900	3000	3000	2900	2700
Jhargram(W.B)	IR-36	0	3000	3000	3000	2800	2600
Karnal	Sarbati Steam	100	4500	4300	4400	4500	5200
Bangarpet(Kar)	Sugandh Sela	100	4300	4100	4200	4200	4900

**Comparative Rice Variety Prices of Delhi (Naya Bazaar) in Rs./Quintal)**

Variety	Today	Week Ago	Month Ago	Year ago	% Change From last week	% Change from last Month	% Change from last Year
	31-Jul-20	25-Jul-20	01-Jul-20	31-Jul-19			
1121 Steam	6300	6450	7200	7800	-2.33	-12.50	-19.23
1121 Sella	5100	5050	5600	6800	0.99	-8.93	-25.00
1121 Raw	6200	6550	7100	7900	-5.34	-12.68	-21.52
Basmati Raw	8500	8200	8500	9400	3.66	0.00	-9.57
1509 Steam Wand New	4800	5700	6200	6800	-15.79	-22.58	-29.41
Sugandh Steam	4500	4600	5100	5900	-2.17	-11.76	-23.73
Sharbati Raw	4000	4100	4300	4400	-2.44	-6.98	-9.09
Pusa Raw Wand	5600	5800	6000	6100	-3.45	-6.67	-8.20
Parmal Sella	3600	3700	3700	3200	-2.70	-2.70	12.50

***Paddy Kharif Sowing Updates as on 31<sup>st</sup> July 2020-***

RICE					
State	Normal Area	Area sown reported			Absolute Change
		This Year	% of Normal	Last Year	
Andhra Pradesh	15.19	5.34	35.1	4.81	0.53
Arunachal Pradesh	1.30	1.17	89.9	1.17	0.00
Assam	20.55	5.46	26.6	10.04	-4.58
Bihar	31.85	28.73	90.2	18.72	10.01
Chhattisgarh	37.64	32.56	86.5	28.66	3.90
Goa	0.27	0.24	88.1	0.24	0.00
Gujarat	7.78	4.93	63.4	3.280	1.65
Haryana	13.79	12.26	88.9	12.08	0.18
Himachal Pradesh	0.73	0.44	60.4	0.45	-0.01
J&K	2.80	1.02	36.4	0.80	0.22
Jharkhand	16.12	12.18	75.6	4.68	7.50
Karnataka	9.28	1.98	21.3	1.940	0.04
Kerala	1.47	0.60	40.9	0.46	0.14
Madhya Pradesh	21.67	18.74	86.5	10.55	8.19
Maharashtra	14.57	5.49	37.7	5.930	-0.44
Manipur	0.42	1.19	285.2	0.97	0.22
Meghalaya	0.97	0.97	99.8	0.97	0.00
Mizoram	0.36	0.35	97.1	0.35	0.00
Nagaland	2.01	1.68	83.6	2.08	-0.40
Odisha	36.67	20.62	56.2	16.610	4.01
Punjab	29.87	26.66	89.3	28.94	-2.28
Rajasthan	1.87	1.97	105.1	1.49	0.48
Sikkim	0.10	0.10	97.8	0.09	0.01
Tamil Nadu	16.06	2.53	15.8	1.6	0.93
Telangana	9.59	6.13	63.9	2.8500	3.28
Tripura	2.00	0.42	21.0	0.52	-0.10
Uttar Pradesh	58.30	52.35	89.8	47.78	4.57
Uttrakhand	2.44	2.48	101.5	2.46	0.02
West Bengal	41.20	17.85	43.3	13.25	4.60
Puducherry	0.13		0.0		0.00
Others	0.28	0.16	57.8	0.19	-0.03
All-India	397.29	266.60	67.1	223.96	42.64

### State wise Progressive Procurement As on 27.07.2020

State	Procurement(in Lakh Tons) 2019-20	2018-19
AP	53.18	32.25
Telangana	74.64	36.14
Assam	1.28	0.52
Bihar	13.41	9.28
Chhattisgarh	46.56	40.80
Haryana	43.03	39.09
Jharkhand	2.55	1.53
Kerala	4.75	4.07
M.P	17.40	13.95
Maharashtra	10.14	4.25
Odisha	47.01	34.48
Punjab	108.76	113.34
Tamilnadu	17.27	11.48
U.P	37.90	32.33
Uttrakhand	6.81	4.62
West Bengal	15.15	16.54
<b>Total</b>	<b>502.75</b>	<b>395.05</b>

All-India progressive procurement of Rice as on 10.07.2020 for Kharif Marketing Season (KMS) 2019-20 is 502.75lakh tons against the procurement of 395.05 lakh tonnes in the corresponding period of last year.

### IGC Balance Sheet:

Attributes ( Fig in Million Tons)	2015-16	2016-17	2017-18 Estimate	(2019-20) Forecast. 28.05.2020	(2020-21) Projection. 25.06.2020
Production	475	487	490	506	505
Trade	40	48	48	44	44
Consumption	475	488	494	500	501
Carryover stocks	164	174	176	182	180
Y-O-Y change	9	9	3	-	4
Major Exporters	31	39	42	46	46

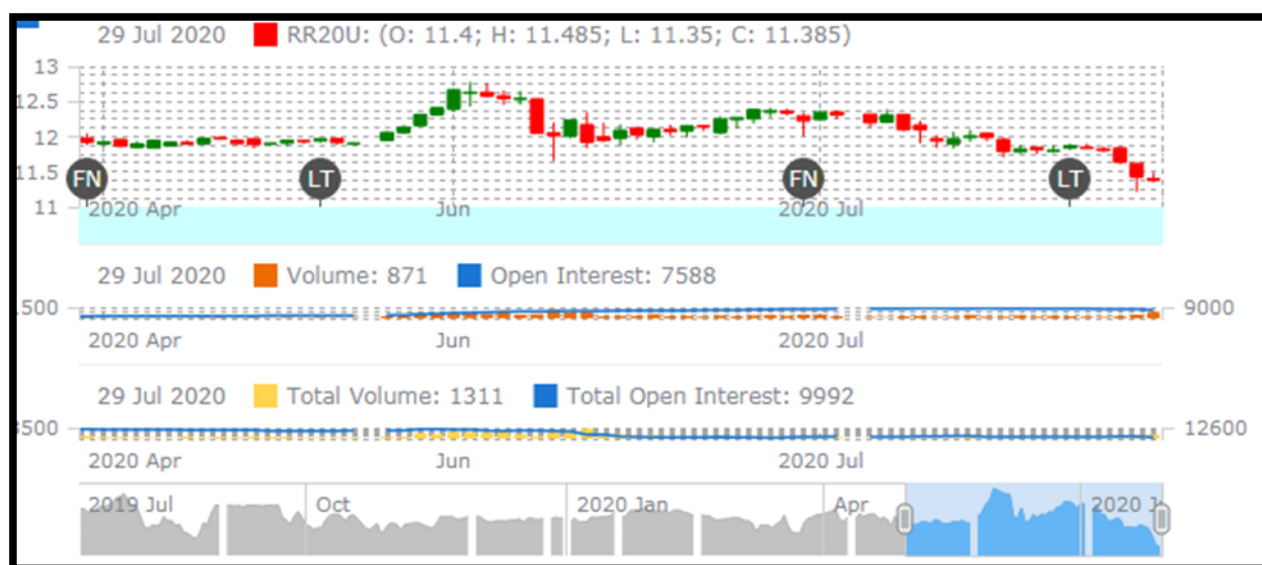
Note: Major exporters are India, Pakistan, Thailand, Vietnam, and United States

**IGC Rice Balance sheet Highlights:** With few changes to the 2019-20 global rice supply and demand balance sheet from previously, end-season carryovers are maintained at 176 million tons, a record level on gains in China and leading exporters. The 2020/21 production outlook is trimmed m/m, with the net

reduction in total supplies leading to a modestly lower figure for inventories, placed at 180 million tons, albeit still a new high. The projection for trade in 2021 is unchanged m/m, at 44 million tons (+4% y/y).

### **Rice Price Trend @ CBOT Sept- 2020, Rough Rice)**

(Prices in US\$/hundredweight)



### **Market Analysis**

The CBOT Sept-2020, month rough chart for rice indicates weak movement from last month. We expect market to hover in the range of USD 11.00-14.50 hundred weights in coming sessions.

### **Price Projection (International-CBOT)**

Duration	Trend	Price Range
04 <sup>th</sup> Week of Aug-2020	Steady	USD/ Hundred Weight 11.20-15.50

#### **Disclaimer**

The information and opinions contained in the document have been compiled from sources believed to be reliable. The company does not warrant its accuracy, completeness and correctness. Use of data and information contained in this report is at your own risk. This document is not, and should not be construed as, an offer to sell or solicitation to buy any commodities. This document may not be reproduced, distributed or published, in whole or in part, by any recipient hereof for any purpose without prior permission from the Company. IASL and its affiliates and/or their officers, directors and employees may have positions in any commodities mentioned in this document (or in any related investment) and may from time to time add to or dispose of any such commodities (or investment). Please see the detailed disclaimer at <http://www.agriwatch.com/disclaimer.php> © 2020 Indian Agribusiness Systems Ltd.