



Rice Weekly Research Report

Contents

- ❖ Outlook and Review
- ❖ Weekly Price Change
- ❖ Weekly Rice Export
- ❖ Progressive Procurement
- ❖ FOB-1121 Steam
- ❖ International Rice Market Summary
- ❖ IGC Balance Sheet
- ❖ CBOT Trend

Outlook and Review:

- The global export rice market is quite favorable for India right now. In the traditional importing countries of Africa, special attention is being paid to ensure internal food security due to the increasing outbreak of Corona virus disease and therefore large quantities of rice are being procured from India by government agencies and private traders.
- Major importing countries are interested to buy rice from India. It is worth noting that in the world of rice exports, India stands first, Thailand second and Vietnam third. This time due to severe drought in Thailand, there are signs of a decline in rice production, while its export offer price is much higher than usual. In Vietnam also, the old exportable rice stock is almost exhausted, while the new paddy will not arrive before October. In view of this, Vietnamese exporters are not currently taking any new orders.
- As far as India is concerned, during the 2019-20 season, there was a huge production of rice and the massive procurement of 418 lakh tonnes by Food Corporation of India, ensuring that the stock situation in the country is very good and the prices are also stable. As a result, the export offer price of Indian rice remains attractive to foreign buyers and many countries in Africa as well as Asia are showing great interest in its purchase.
- According to government data, during the first quarter of the current financial year i.e., April-June 2020, 19.28 lakh tonnes of non-basmati rice were exported from India. In comparison, in the same period of the last financial year, exports of only 12.15 lakh tonnes were recorded. The average export price of rice also improved from \$ 397 to \$ 400 per tonne.
- A 6% increase in monsoon rainfall has pushed up kharif sowing by 8.6 per cent compared to the same week last year, with paddy heading for a record acreage with planting still on. There has been a substantial increase in planting of paddy in many States that received bountiful rains so far. These include Telangana, which has sown paddy over an additional 10.5 lakh ha, and Bihar, Jharkhand and Madhya Pradesh which have added nearly 6 lakh ha each. Among the other States that have planted more paddy are West Bengal (4.48 lakh ha), Odisha (3.16 lakh ha) and Karnataka (2.18 lakh ha). The paddy area in Punjab has come down by 1.78 lakh ha from the last kharif season, following the state's push towards other low water dependent crops. The total area under paddy so far is 378 lakh ha, nearly 12 per cent more than the 339 lakh ha covered in the same week last year.
- The kharif rice procurement in the upcoming season that starts in October-2020, is seen at 43.0 million tonnes based on the estimates sent by several states.

State wise Wholesale Prices Weekly Analysis for Rice First week August, 2020

State	Prices 24-31 Aug 2020	Prices 16-23 Aug 2020	Prices 09-15 Aug 2020	Prices 24-31 Aug 2019	% Change(Over Previous Week)	% Change(Over Previous to Previous Week)	% Change(Over Previous Year)
Karnataka	2672.8	3808.65	3603.73	3802.73	-29.82	-25.83	-29.71
Odisha	2588.65	2836.3	2792.63	2699.61	-8.73	-7.3	-4.11
Uttar Pradesh	2654.02	2699.01	2707.12	2516.9	-1.67	-1.96	5.45
Andhra Pradesh				3985.71	--	--	--
Tripura	3034.44	2989.4	2978.77	2891.95	1.51	1.87	4.93
Gujarat	4300	4200.18	4200	3142.37	2.38	2.38	36.84
Maharashtra	3218.18	2200	2200	3497.55	46.28	46.28	-7.99
Uttrakhand				2654.74	--	--	--
Kerala	3491.68	3472.45	3481.08	3413.77	0.55	0.3	2.28
Meghalaya				3800	--	--	--
West Bengal	2873.5	2856.73	2843.1	2791.31	0.59	1.07	2.94
Assam				3172.84	--	--	--
NCT of Delhi				2000	--	--	--
Jharkhand				3866.67	--	--	--
Manipur				4465.91	--	--	--
Average	3104.16	3132.84	3100.8	3246.8			

Duration	Trend	Average Price Range	Reason
01 st Week of Sept, 2020	Steady to Firm	Rs.3300-3900/Quintal	Overseas demand of Indian rice due to competitive price supports the price at current level.

Weekly Rice Price Change in Delhi Market (Figure: in Rs. /Quintal)

Rice Price	Grade	Change*	29-Aug-20	28-Aug-20	23-Aug-20	29-Jul-20	29-Aug-19
Chirala(A.P)	BPT(Raw)	-50	3300	3300	3350	3300	3200
Jharkhand(Ranchi)	Coarse	0	3300	3300	3300	3100	3000
Ernakulam(Kerala)	Jaya	0	3600	3600	3600	3500	3450
Divi(A.P)	BPT(Steam)	-200	3200	3450	3400	3000	2900
Visakhapatnam	HMT(Raw)	200	4600	4600	4400	3900	3850
Nandyal	Sona Fine	-200	3800	3800	4000	4100	3900
Barasat(W.B)	Masuri	0	3300	3200	3300	3300	3250
Dibrugarh	Common	-200	3200	3200	3400	3200	3000
Jhargram(W.B)	IR-36	100	3000	2800	2900	2900	2350
Jhargram(W.B)	IR-36	200	2900	2900	2700	2600	2300
Karnal	Sarbati Steam	-100	3900	3900	4000	4000	4400
Bangarpet(Kar)	Sugandh Sela	-100	4500	4500	4600	4600	5000

Comparative Rice Variety Prices of Delhi (Naya Bazaar) in Rs./Quintal)

Variety	Today	Week Ago	Month Ago	Year ago	% Change From last week	% Change from last Month	% Change from last Year
	29-Aug-20	22-Aug-20	30-Jul-20	31-Aug-19			
1121 Steam	6400	6200	6300	7500	3.23	1.59	-14.67
1121 Sella	5200	5250	5100	6300	-0.95	1.96	-17.46
1121 Raw	7100	7000	6200	7600	1.43	14.52	-6.58
Basmati Raw	8800	8500	8500	9400	3.53	3.53	-6.38
1509 Steam Wand New	5500	5100	4800	6600	7.84	14.58	-16.67
Sugandh Steam	4600	4600	4500	5500	0.00	2.22	-16.36
Sharbati Raw	3800	3800	4000	4050	0.00	-5.00	-6.17
Pusa Raw Wand	6100	5700	5600	5700	7.02	8.93	7.02
Parmal Sella	3750	3750	3600	3200	0.00	4.17	17.19

Paddy Kharif Sowing Updates as on 25th August 2020-

State	RICE				
	Normal Area	Area sown reported			Absolute Change
		This Year	% of Normal	Last Year	
Andhra Pradesh	15.19	9.57	63.0	9.31	0.26
Arunachal Pradesh	1.30	1.17	89.9	1.17	0.00
Assam	20.55	18.05	87.8	17.97	0.08
Bihar	31.85	32.55	102.2	26.56	5.99
Chhattisgarh	37.64	37.29	99.1	36.28	1.01
Goa	0.27	0.24	88.1	0.24	0.00
Gujarat	7.78	7.71	99.1	7.61	0.10
Haryana	13.79	13.23	95.9	12.98	0.25
Himachal Pradesh	0.73	0.44	60.4	0.45	-0.01
J&K	2.80	1.14	40.7	1.13	0.01
Jharkhand	16.12	16.90	104.8	11.04	5.86
Karnataka	9.28	5.88	63.3	3.700	2.18
Kerala	1.47	0.66	45.0	0.67	-0.01
Madhya Pradesh	21.67	28.03	129.4	22.08	5.95
Maharashtra	14.57	12.67	86.9	11.460	1.21
Manipur	0.42	1.19	285.2	0.97	0.22
Meghalaya	0.97	0.97	99.8	0.97	0.00
Mizoram	0.36	0.35	97.1	0.35	0.00

Nagaland	2.01	1.95	97.0	2.10	-0.15
Odisha	36.67	33.28	90.8	30.12	3.16
Punjab	29.87	27.42	91.8	29.20	-1.78
Rajasthan	1.87	1.97	105.1	1.71	0.26
Tamil Nadu	16.06	3.12	19.4	1.96	1.16
Telangana	9.59	18.12	189.0	7.58	10.54
Tripura	2.00	0.42	21.0	1.65	-1.23
Uttar Pradesh	58.30	60.01	102.9	59.89	0.12
Uttarakhand	2.44	2.49	101.9	2.49	0.00
West Bengal	41.20	41.20	100.0	36.72	4.48
Others	0.28	0.20	72.2	0.20	0.00
All-India	397.29	378.32	95.2	338.65	39.67

State wise Progressive Procurement As on 24.08.2020

State	Procurement(in Lakh Tons) 2019-20	2018-19
AP	53.18	32.25
Telangana	74.64	36.14
Assam	1.28	0.52
Bihar	13.41	9.28
Chhattisgarh	46.56	40.80
Haryana	43.03	39.09
Jharkhand	2.55	1.53
Kerala	4.75	4.07
M.P	17.40	13.95
Maharashtra	10.14	4.25
Odisha	47.01	34.48
Punjab	108.76	113.34
Tamilnadu	17.27	11.48
U.P	37.90	32.33
Uttrakhand	6.81	4.62

West Bengal	15.15	16.54
Total	509.41	395.05

All-India progressive procurement of Rice as on 24.08.2020 for Kharif Marketing Season (KMS) 2019-20 is 509.41.lakh tons against the procurement of 395.05 lakh tonnes in the corresponding period of last year.

IGC Balance Sheet:

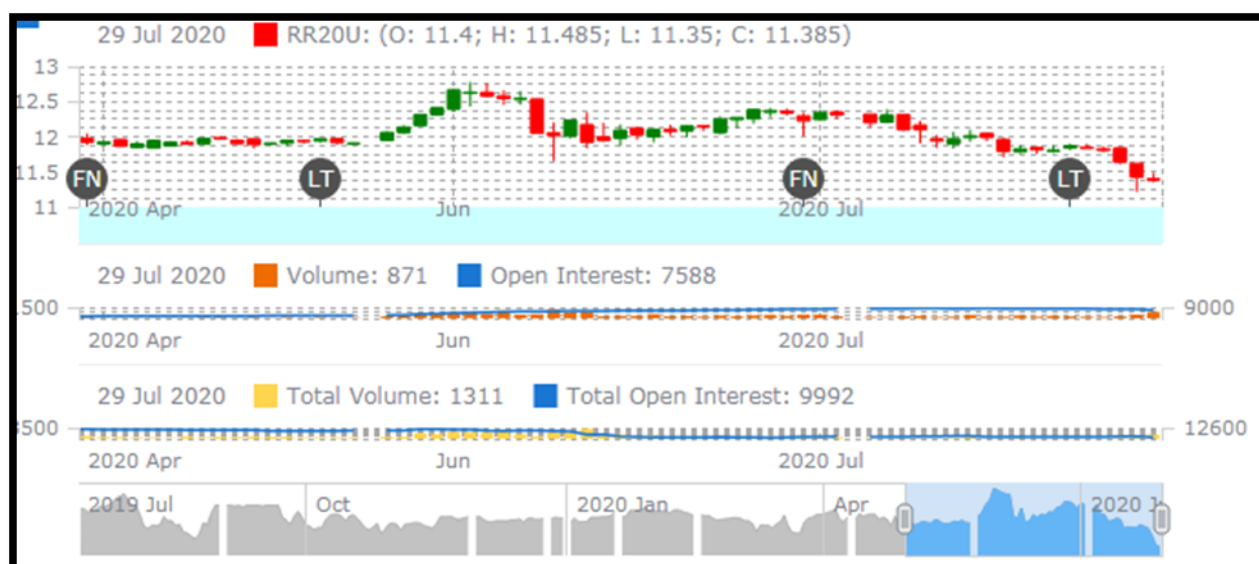
Attributes (Fig in Million Tons)	2015-16	2016-17	2017-18 Estimate	(2019-20) Forecast. 28.05.2020	(2020-21) Projection. 25.06.2020
Production	475	487	490	506	505
Trade	40	48	48	44	44
Consumption	475	488	494	500	501
Carryover stocks	164	174	176	182	180
Y-O-Y change	9	9	3	-	4
Major Exporters	31	39	42	46	46

Note: Major exporters are India, Pakistan, Thailand, Vietnam, and United States

IGC Rice Balance sheet Highlights: With few changes to the 2019-20 global rice supply and demand balance sheet from previously, end-season carryovers are maintained at 176 million tons, a record level on gains in China and leading exporters. The 2020/21 production outlook is trimmed m/m, with the net reduction in total supplies leading to a modestly lower figure for inventories, placed at 180 million tons, albeit still a new high. The projection for trade in 2021 is unchanged m/m, at 44 million tons (+4% y/y).

Rice Price Trend @ CBOT Sept- 2020, Rough Rice)

(Prices in US\$/hundredweight)





Market Analysis

The CBOT Sept-2020, month rough chart for rice indicates weak movement from last month. We expect market to hover in the range of USD 11.00-14.50 hundred weights in coming sessions.

Price Projection (International-CBOT)

Duration	Trend	Price Range
01 st Week of Sept-2020	Steady	USD/ Hundred Weight 11.20-15.50

Disclaimer

The information and opinions contained in the document have been compiled from sources believed to be reliable. The company does not warrant its accuracy, completeness and correctness. Use of data and information contained in this report is at your own risk. This document is not, and should not be construed as, an offer to sell or solicitation to buy any commodities. This document may not be reproduced, distributed or published, in whole or in part, by any recipient hereof for any purpose without prior permission from the Company. IASL and its affiliates and/or their officers, directors and employees may have positions in any commodities mentioned in this document (or in any related investment) and may from time to time add to or dispose of any such commodities (or investment). Please see the detailed disclaimer at <http://www.agriwatch.com/disclaimer.php> © 2020 Indian Agribusiness Systems Ltd.