

## Domestic and Export Trade:

### Domestic Rubber Prices

Centers	Category	Price (Rs/100 Kg)		Chg
		28.2.2014	21.2.2014	
Kottayam	RSS-4	14600	14800	-200
	RSS-5	14450	14700	-250
	ISNR-20	14350	14700	-350
	Latex (60% drc)	12050	12100	-50
Cochin	RSS-4	14600	14800	-200
	RSS-5	14450	14700	-250

The domestic RSS-4 prices fell 5.6% compared to previous week and it fell more than 7% in last fortnight. In Kottayam the RSS-4 prices were quoted at Rs 15200 per 100 kg from Rs 16100 in the first week of Jan.

Further, the import in rubber is still viable despite rise in import duty in the same. This is because the manufacturing companies have advance licenses for duty free imports. Therefore, the supplies are unlikely to hit in coming months despite fall in rubber production this season. Till December 31, 264,576 tonnes were imported by India mainly from Indonesia; further 30,000 tonnes are expected to be imported during January-March. Hence, the prices are expected to remain under pressure in near-term.

Looking at the current imports scenario even after upwards revision of imports duty, Rubber Merchant's Association has raised its voice against imports and it is asking government to pause imports for atleast three months.

Weak global and domestic rubber market outlook, viable imports for India, fall in crude oil will keep the domestic rubber market under pressure in near-term. However, approaching lean tapping period may limit the fall.

### International Development and Impact:

The natural rubber declined further during the week in international market due to the slowdown and weak investor's confidence. There was no fresh demand from the tyre manufactures during the period.

Further, higher inventories in China and Japan with recent Chinese imports from Thailand taking advantage of the temporary export duty relief remained bearish for the global rubber market.

China has reportedly bought 2.47 Mn T in 2013, rise of 13.5% from previous year. Thailand's half of exports volume was supplied to China alone. The China's rubber stocks inspected by Shanghai Future Exchange rose to 190,158 tons second week of Jan is considered to be the highest figure since 2004.

### International Rubber Prices

Centers	Category	Price (Rs/100 Kg)		Chg
		28.2.2014	21.2.2014	
Bangkok	RSS-1	13628	13838	-210
	RSS-2	13514	13724	-210
	RSS-3	13409	13619	-210
	RSS-4	13352	13561	-209
	RSS-5	13266	13475	-209
	SMR-20	-	-	-
	Latex (60% drc)	-	-	-
Kuala Lumpur	RSS-1	-	-	-
	SMR-20	11688	11912	-224
	Latex (60% drc)	9156	9202	-46

However, weak Yen against US dollar and Nymex crude oil above the support level of US \$90/barrel is still a positive sign for international rubber. Apart from these factors, Thailand, Indonesia and Malaysia, major rubber producing countries are entering in the dry wintering season in coming month, which will naturally lead to supply crunch which will eventually lend support to the rubber prices.

Further, auto sales in China have marked record 21.98 million units in 2013, up 14% from 2012.

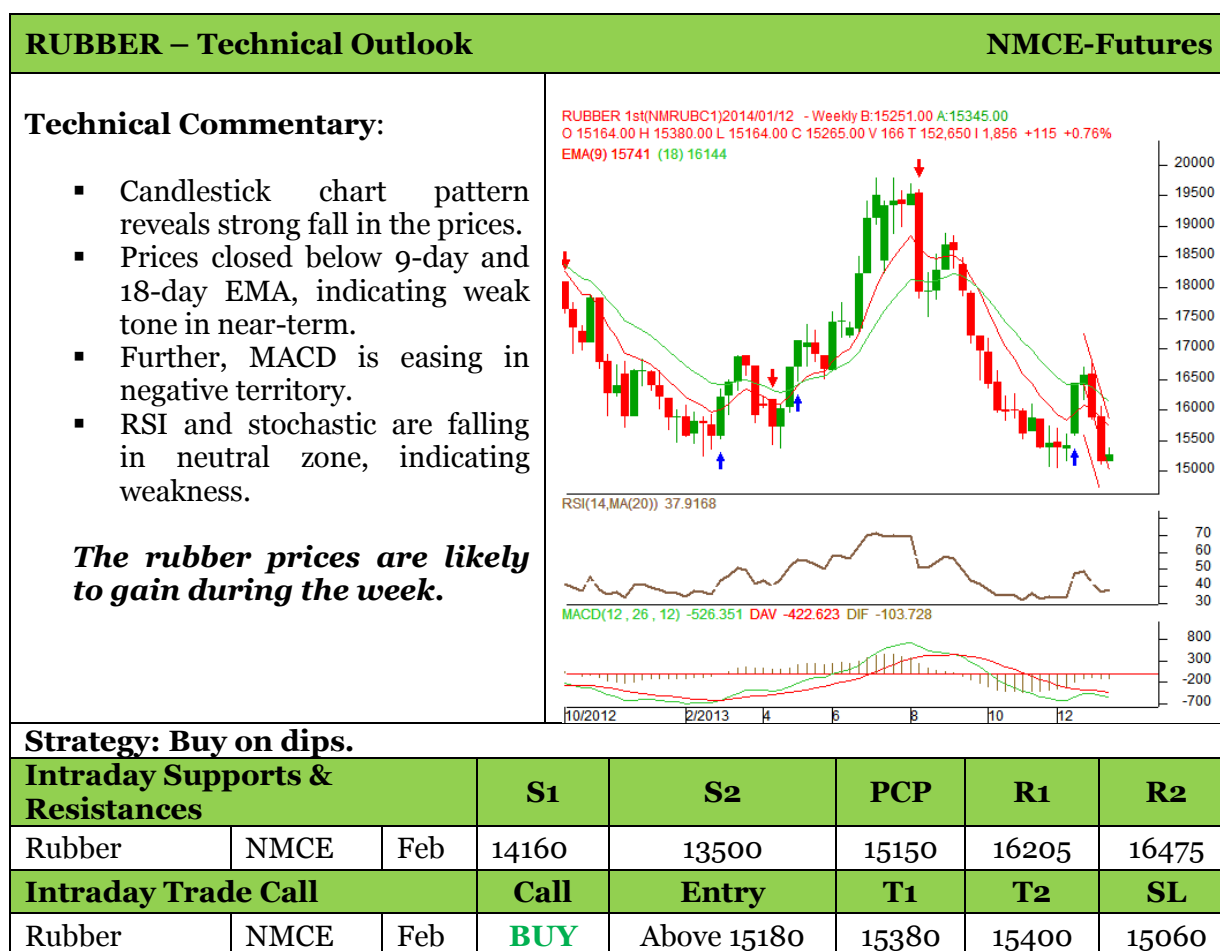
The international rubber prices are likely to recover on the aforesaid factors.

### Outlook and Recommendation:

**Spot:** The domestic prices are likely to recover in coming weeks with the tapping season coming to an end in December; this keeps the domestic rubber prices up in the fourth quarter. Besides, expected recovery in global rubber market on weak Yen, dry wintering season in major producing countries .

### Tug of War

Bulls	Bears
Fall in Japanese Yen against US dollar.	Weak global and domestic rubber market sentiments.
Dry wintering season in major producing countries.	Higher rubber inventories in China and Japan.
Upward revision in India's import duty.	Weakness in crude oil.
Remarkable growth in Chinese automobile industry.	
Improving crude oil, now above US \$ 90 a barrel – Nymex.	



#### Disclaimer

The information and opinions contained in the document have been compiled from sources believed to be reliable. The company does not warrant its accuracy, completeness and correctness. Use of data and information contained in this report is at your own risk. This document is not, and should not be construed as, an offer to sell or solicitation to buy any commodities. This document may not be reproduced, distributed or published, in whole or in part, by any recipient hereof for any purpose without prior permission from the Company. IASL and its affiliates and/or their officers, directors and employees may have positions in any commodities mentioned in this document (or in any related investment) and may from time to time add to or dispose of any such commodities (or investment). Please see the detailed disclaimer at <http://www.agriwatch.com/Disclaimer.asp>