

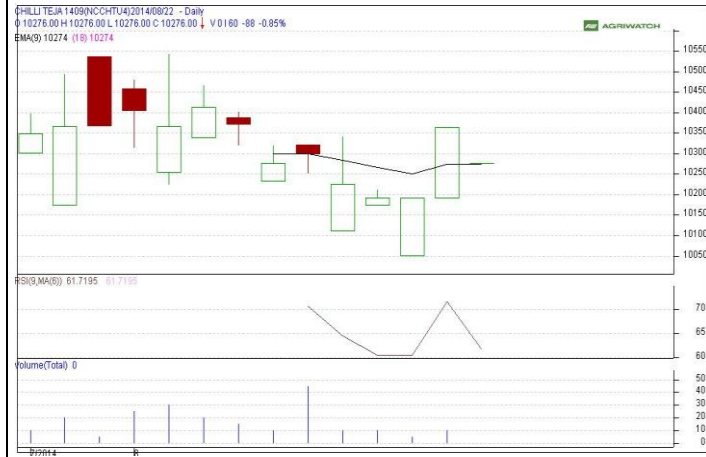
Commodity: Red Chilli
Contract: Sep

Exchange: NCDEX
Expiry: Sep 19th 2014

Red Chilli

Technical Commentary:

Candlestick chart indicates bullish sentiment in the market. RSI is moving up in neutral zone in the market, prices may go up in short term. Volumes are not supporting the prices.



Strategy: Buy

			S2	S1	PCP	R1	R2
Red chilli	NCDEX	Sep	10250	10300	10364	10520	10550
Intraday Trade Call			Call	Entry	T1	T2	SL
Red Chilli	NCDEX	Sep	Buy	Above 10350	10450	10500	10300

Do not carry forward the position until the next day.

Commodity: Turmeric
Contract: Sep

Exchange: NCDEX
Expiry: Sep 19th 2014

TURMERIC

Technical Commentary:

Candlestick chart suggests bearish sentiment in the market. Volumes are not supporting the prices. RSI is moving down in neutral zone in the market.



Strategy: Sell

			S2	S1	PCP	R1	R2
Turmeric	NCDEX	Sep	6350	6360	6478	6510	6520
Intraday Trade Call			Call	Entry	T1	T2	SL
Turmeric	NCDEX	Sep	Sell	Below 6470	6400	6380	6505

Do not carry forward the position until the next day.

Commodity: Coriander
Contract: Sep
Exchange: NCDEX
Expiry: Sep 19th, 2014
CORIANDER
Technical Commentary:

Candlestick chart indicates bearish sentiment in the market. Volumes are not supporting the prices. RSI moving down in neutral zone indicates prices may go down in short term.


Strategy: Sell

Intraday Supports & Resistances			S2	S1	PCP	R1	R2
Coriander	NCDEX	Sep	11660	11700	11797	11900	11920
Intraday Trade Call			Call	Entry	T1	T2	SL
Coriander	NCDEX	Sep	Sell	Below 11830	11720	11700	11885

Do not carry forward the position until the next day

Commodity: Jeera (Cumin Seed)
Contract: Sep
Exchange: NCDEX
Expiry: Sep 19th, 2014
JEERA
Technical Commentary:

Candlestick chart formation indicates bearish sentiment in the market. RSI moving down in overbought zone indicates prices may correct in short term. Volumes are supporting the prices.


Strategy: Sell

Intraday Supports & Resistances			S2	S1	PCP	R1	R2
Jeera	NCDEX	Sep	10980	11000	11085	11180	11200
Intraday Trade Call			Call	Entry	T1	T2	SL
Jeera	NCDEX	Sep	Sell	Below 11111	11020	11000	11160

Do not carry forward the position until the next day

Commodity: Cardamom
Contract: Sep
Exchange: MCX
Expiry: Sep 15th, 2014
CARDAMOM
Technical Commentary:

Candlestick formation reveals bearish sentiment in the market. RSI is moving down in neutral zone in the market. Volumes are supporting the prices.


Strategy: Sell

Intraday Supports & Resistances			S2	S1	PCP	R1	R2
Cardamom	MCX	Sep	910	920	948.9	970	980
Intraday Trade Call			Call	Entry	T1	T2	SL
Cardamom	MCX	Sep	Sell	Below 950	930	925	960

Do not carry forward the position until the next day

Disclaimer

The information and opinions contained in the document have been compiled from sources believed to be reliable. The company does not warrant its accuracy, completeness and correctness. Use of data and information contained in this report is at your own risk. This document is not, and should not be construed as, an offer to sell or solicitation to buy any commodities. This document Jun not be reproduced, distributed or published, in whole or in part, by any recipient hereof for any purpose without prior permission from the Company. IASL and its affiliates and/or their officers, directors and employees Jun have positions in any commodities mentioned in this document (or in any related investment) and Jun from time to time add to or dispose of any such commodities (or investment). Please see the detailed disclaimer at <http://www.agriwatch.com/Disclaimer.asp>

© 2014 Indian Agribusiness Systems Pvt Ltd.