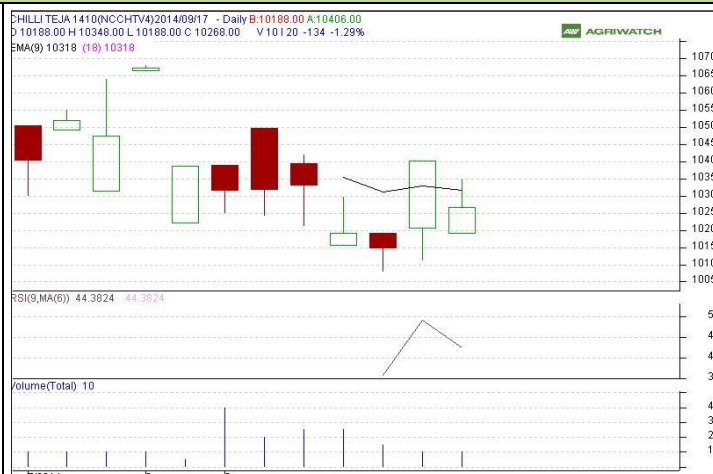


**Commodity: Red Chilli**  
**Contract: Oct**
**Exchange: NCDEX**  
**Expiry: Oct 20<sup>th</sup> 2014**
**Red Chilli**
**Technical Commentary:**

Candlestick chart indicates range bound movement in the market. RSI is moving down in neutral zone in the market, prices may go down in short term. Volumes not supporting the prices.


**Strategy: Buy**

			S2	S1	PCP	R1	R2
Red chilli	NCDEX	Oct	10150	10200	10268	10400	10420
Intraday Trade Call							
Red Chilli	NCDEX	Oct	Buy	Above 10250	10350	10380	10200

Do not carry forward the position until the next day.

**Commodity: Turmeric**  
**Contract: Oct**
**Exchange: NCDEX**  
**Expiry: Oct 20<sup>th</sup> 2014**
**TURMERIC**
**Technical Commentary:**

Candlestick chart suggests indecision situation in the market. Volumes are not supporting the prices. RSI is moving up in oversold zone indicates prices may correct in the market.


**Strategy: Wait**

			S2	S1	PCP	R1	R2
Turmeric	NCDEX	Oct	5800	5820	5940	6080	6100
Intraday Trade Call			Call	Entry	T1	T2	SL
Turmeric	NCDEX	Oct	Wait	--	--	--	--

Do not carry forward the position until the next day.

**Commodity: Coriander**  
**Contract: Oct**

**Exchange: NCDEX**  
**Expiry: Oct 20<sup>th</sup>, 2014**

### CORIANDER

#### Technical Commentary:

Candlestick chart indicates bullish sentiment in the market. Volumes are supporting the prices. RSI moving up in neutral zone indicates prices may go up in short term.



**Strategy: Buy**

Intraday Supports & Resistances			S2	S1	PCP	R1	R2
Coriander	NCDEX	Oct	11700	11800	11927	12080	12100
Intraday Trade Call			Call	Entry	T1	T2	SL
Coriander	NCDEX	Oct	Buy	Above 11920	12000	12050	11880

Do not carry forward the position until the next day

**Commodity: Jeera (Cumin Seed)**  
**Contract: Oct**

**Exchange: NCDEX**  
**Expiry: Oct 20<sup>th</sup>, 2014**

### JEERA

#### Technical Commentary:

Candlestick chart formation indicates indecision situation in the market. RSI moving up in oversold zone indicates prices may correct in short term. Volumes are not supporting the prices.



**Strategy: Wait**

Intraday Supports & Resistances			S2	S1	PCP	R1	R2
Jeera	NCDEX	Oct	10500	10550	10650	10720	10750
Intraday Trade Call			Call	Entry	T1	T2	SL
Jeera	NCDEX	Oct	Wait	--	--	--	--

Do not carry forward the position until the next day

**Commodity: Cardamom**  
**Contract: Oct**

**Exchange: MCX**  
**Expiry: Oct 15<sup>th</sup>, 2014**

### CARDAMOM

#### Technical Commentary:

Candlestick formation reveals bearish trend in the market. RSI is moving down in oversold zone in the market. Volumes are supporting the prices.



**Strategy: Sell**

Intraday Supports & Resistances			S2	S1	PCP	R1	R2
Cardamom	MCX	Oct	855	860	876	885	900
Intraday Trade Call			Call	Entry	T1	T2	SL
Cardamom	MCX	Oct	<b>Sell</b>	Below 878	868	865	883

Do not carry forward the position until the next day

### Disclaimer

The information and opinions contained in the document have been compiled from sources believed to be reliable. The company does not warrant its accuracy, completeness and correctness. Use of data and information contained in this report is at your own risk. This document is not, and should not be construed as, an offer to sell or solicitation to buy any commodities. This document Jun not be reproduced, distributed or published, in whole or in part, by any recipient hereof for any purpose without prior permission from the Company. IASL and its affiliates and/or their officers, directors and employees Jun have positions in any commodities mentioned in this document (or in any related investment) and Jun from time to time add to or dispose of any such commodities (or investment). Please see the detailed disclaimer at <http://www.agriwatch.com/Disclaimer.asp>  
 © 2014 Indian Agribusiness Systems Pvt Ltd.