

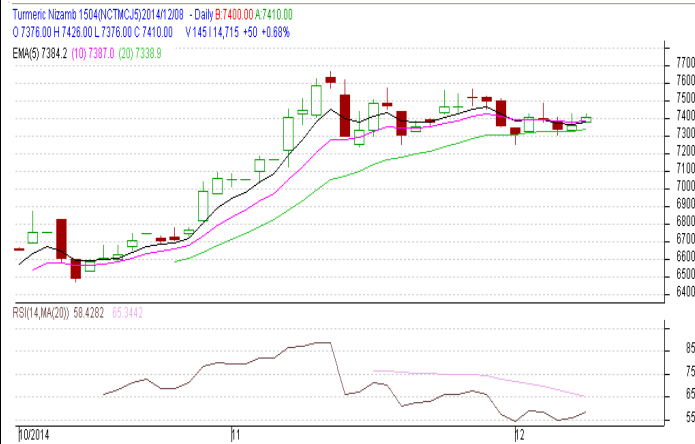
Commodity: Turmeric
Contract: Apr

Exchange: NCDEX
Expiry: Apr 20th 2015

TURMERIC

Technical Commentary:

Candlestick chart indicates range bound movement in the market. Volumes are not supporting the prices. RSI is moving down in neutral zone indicates prices may go down in the market.



Strategy: Sell

			S2	S1	PCP	R1	R2
Turmeric	NCDEX	Apr	7150	7200	7360	7450	7470
Intraday Trade Call			Call	Entry	T1	T2	SL
Turmeric	NCDEX	Apr	Sell	Below 7365	7280	7250	7415

Do not carry forward the position until the next day.

Commodity: Coriander
Contract: Jan

Exchange: NCDEX
Expiry: Jan 20th, 2015

CORIANDER

Technical Commentary:

Candlestick chart indicates bearish sentiment in the market. Volumes are not supporting the prices. RSI moving down in neutral zone indicates bearish sentiment in the market.



Strategy: Sell

Intraday Supports & Resistances			S2	S1	PCP	R1	R2
Coriander	NCDEX	Jan	12950	12980	13148	13260	13290
Intraday Trade Call			Call	Entry	T1	T2	SL
Coriander	NCDEX	Jan	Sell	Below 13120	13020	13000	13180

Do not carry forward the position until the next day

Commodity: Jeera (Cumin Seed)
Contract: Jan

Exchange: NCDEX
Expiry: Jan 20th, 2015

JEERA

Technical Commentary:

Candlestick chart formation bullish sentiment in the market, however prices may correct at resistance level. RSI moving up in neutral zone indicates prices may go up in short term. Volumes are supporting the prices.



Strategy: Buy

Intraday Supports & Resistances			S2	S1	PCP	R1	R2
Jeera	NCDEX	Jan	12300	12400	12610	12820	12830
Intraday Trade Call			Call	Entry	T1	T2	SL
Jeera	NCDEX	Jan	Buy	Above 12670	13650	13670	12622

Do not carry forward the position until the next day

Commodity: Cardamom
Contract: Jan

Exchange: MCX
Expiry: Jan 15th, 2015

CARDAMOM

Technical Commentary:

Candlestick formation reveals range bound movement in the market. RSI is moving down in neutral zone in the market. Volumes are supporting the prices.



Strategy: Wait

Intraday Supports & Resistances			S2	S1	PCP	R1	R2
Cardamom	MCX	Jan	845	850	868	875	880
Intraday Trade Call			Call	Entry	T1	T2	SL
Cardamom	MCX	Jan	Wait	--	--	--	--

Do not carry forward the position until the next day



Disclaimer

The information and opinions contained in the document have been compiled from sources believed to be reliable. The company does not warrant its accuracy, completeness and correctness. Use of data and information contained in this report is at your own risk. This document is not, and should not be construed as, an offer to sell or solicitation to buy any commodities. This document Jun not be reproduced, distributed or published, in whole or in part, by any recipient hereof for any purpose without prior permission from the Company. IASL and its affiliates and/or their officers, directors and employees Jun have positions in any commodities mentioned in this document (or in any related investment) and Jun from time to time add to or dispose of any such commodities (or investment). Please see the detailed disclaimer at <http://www.agriwatch.com/Disclaimer.asp>

© 2014 Indian Agribusiness Systems Pvt Ltd.