

Commodity: Chilli
Contract: Oct
Exchange: NCDEX
Expiry: Oct 20th, 2015
CHILLI
Technical Commentary:

Candlestick chart indicates bearish sentiment in the market. Volumes are supporting the prices. RSI is moving flat in neutral zone indicates steady movement.


Strategy: Buy

Intraday Supports & Resistances			S2	S1	PCP	R1	R2
Chilli	NCDEX	Oct	10900	11000	11198	11400	11500
Intraday Trade Call			Call	Entry	T1	T2	SL
Chilli	NCDEX	Oct	Buy	11150	11250	11300	11090

Do not carry forward the position until the next day

Commodity: Turmeric
Contract: Oct
Exchange: NCDEX
Expiry: Oct 20th 2015
TURMERIC
Technical Commentary:

Candlestick chart indicates bearish sentiment in the market. RSI is moving down in overbought zone. Volumes and prices are falling indicating long liquidation.


Strategy: Sell

			S2	S1	PCP	R1	R2
Turmeric	NCDEX	Oct	7375	7450	7712	8200	8350
Intraday Trade Call			Call	Entry	T1	T2	SL
Turmeric	NCDEX	Oct	Sell	Below 7730	7680	7660	7780

Do not carry forward the position until the next day.

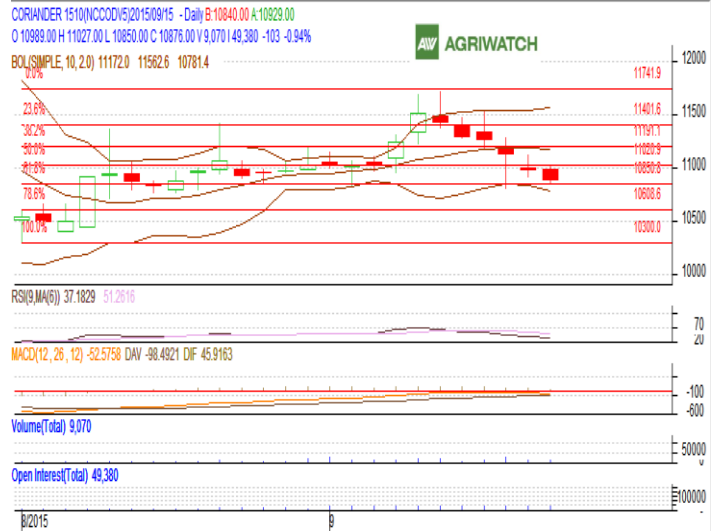
Commodity: Coriander
Contract: Oct

Exchange: NCDEX
Expiry: Oct 20th, 2015

CORIANDER

Technical Commentary:

Candlestick chart indicates bearish sentiment in the market. Fall in prices and rise in volumes and OI indicates short build up. RSI moving down in neutral zone.



Strategy: Buy

Intraday Supports & Resistances			S2	S1	PCP	R1	R2
Coriander	NCDEX	Oct	10575	10675	10876	11100	11200
Intraday Trade Call			Call	Entry	T1	T2	SL
Coriander	NCDEX	Oct	Buy	10850	10950	11000	10790

Do not carry forward the position until the next day

Commodity: Jeera (Cumin Seed)
Contract: Oct

Exchange: NCDEX
Expiry: Oct 20th, 2015

JEERA

Technical Commentary:

Candlestick chart formation reveals bearish sentiment in the market. RSI moving down in neutral zone in the market indicates prices may go down in short term. Volumes are supporting the prices.



Strategy: Stay Away

Intraday Supports & Resistances			S2	S1	PCP	R1	R2
Jeera	NCDEX	Oct	15200	15400	15707	16200	16400
Intraday Trade Call			Call	Entry	T1	T2	SL
Jeera	NCDEX	Oct	Wait	-	-	-	-

Do not carry forward the position until the next day

Commodity: Cardamom
Contract: Oct
Exchange: MCX
Expiry: Oct 15th, 2015
CARDAMOM
Technical Commentary:

Candlestick formation range bound in the market. RSI is moving flat in neutral zone in the market. Volumes are supporting the prices.


Strategy: Sell

Intraday Supports & Resistances			S2	S1	PCP	R1	R2
Cardamom	MCX	Oct	810	815	821.4	836	840
Intraday Trade Call			Call	Entry	T1	T2	SL
Cardamom	MCX	Oct	Sell	Above 824	818	815	827

Do not carry forward the position until the next day

Disclaimer

The information and opinions contained in the document have been compiled from sources believed to be reliable. The company does not warrant its accuracy, completeness and correctness. Use of data and information contained in this report is at your own risk. This document is not, and should not be construed as, an offer to sell or solicitation to buy any commodities. This document Jun not be reproduced, distributed or published, in whole or in part, by any recipient hereof for any purpose without prior permission from the Company. IASL and its affiliates and/or their officers, directors and employees Jun have positions in any commodities mentioned in this document (or in any related investment) and Jun from time to time add to or dispose of any such commodities (or investment). Please see the detailed disclaimer at <http://www.agriwatch.com/Disclaimer.asp>
 © 2014 Indian Agribusiness Systems Pvt Ltd.