

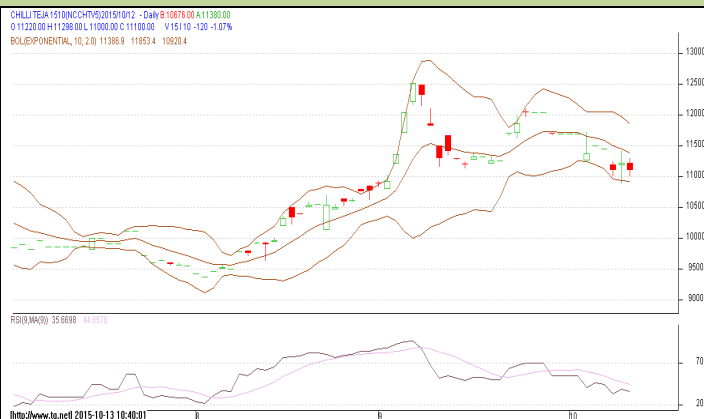
Commodity: Chilli
Contract: Oct

Exchange: NCDEX
Expiry: Oct 20th, 2015

CHILLI

Technical Commentary:

Candlestick chart indicates indecision situation in the market. Volumes are supporting the prices. RSI is moving down in neutral zone indicates prices may go down in the market.



Strategy: Buy

Intraday Supports & Resistances			S2	S1	PCP	R1	R2
Chilli	NCDEX	Oct	10500	11000	11476	11600	11919
Intraday Trade Call			Call	Entry	T1	T2	SL
Chilli	NCDEX	Oct	Buy	Above 11500	11560	11590	11464

Do not carry forward the position until the next day

Commodity: Turmeric
Contract: Nov

Exchange: NCDEX
Expiry: Nov 20th 2015

TURMERIC

Technical Commentary:

Candlestick chart indicates bullish sentiment in the market. RSI is moving up in neutral zone indicates prices may go up in the market. Volumes are supporting the prices.



Strategy: Buy

			S2	S1	PCP	R1	R2
Turmeric	NCDEX	Nov	7800	7850	8018	8270	8300
Intraday Trade Call			Call	Entry	T1	T2	SL
Turmeric	NCDEX	Nov	Buy	Above 8000	8100	8150	7940

Do not carry forward the position until the next day.

Commodity: Coriander
Contract: Nov

Exchange: NCDEX
Expiry: Nov 20th, 2015

CORIANDER

Technical Commentary:

Candlestick chart indicates bullish sentiment in the market. Volumes are not supporting the prices. **RSI moving up in overbought zone indicates prices may correct in short term.**



Strategy: Wait

Intraday Supports & Resistances			S2	S1	PCP	R1	R2
Coriander	NCDEX	Nov	11600	11700	12032	12700	12838
Intraday Trade Call			Call	Entry	T1	T2	SL
Coriander	NCDEX	Nov	Wait	-	-	-	-

Do not carry forward the position until the next day

Commodity: Jeera (Cumin Seed)
Contract: Nov

Exchange: NCDEX
Expiry: Nov 20th, 2015

JEERA

Technical Commentary:

Candlestick chart formation reveals bullish sentiment in the market. RSI moving up in neutral zone in the market indicates prices may go up in short term. Volumes are supporting the prices.



Strategy: Buy

Intraday Supports & Resistances			S2	S1	PCP	R1	R2
Jeera	NCDEX	Nov	15700	15800	16370	16800	17500
Intraday Trade Call			Call	Entry	T1	T2	SL
Jeera	NCDEX	Nov	Buy	Above 16200	16400	16500	16080

Do not carry forward the position until the next day

Commodity: Cardamom
Contract: Nov
Exchange: MCX
Expiry: Nov 13th, 2015
CARDAMOM
Technical Commentary:

Candlestick formation reveals indecision situation in the market. RSI is moving down in neutral zone in the market, prices may go down in the market. Volumes are supporting the prices.


Strategy: Wait

Intraday Supports & Resistances			S2	S1	PCP	R1	R2
Cardamom	MCX	Nov	755	800	801	825	830
Intraday Trade Call			Call	Entry	T1	T2	SL
Cardamom	MCX	Nov	Wait	--	--	--	--

Do not carry forward the position until the next day

Disclaimer

The information and opinions contained in the document have been compiled from sources believed to be reliable. The company does not warrant its accuracy, completeness and correctness. Use of data and information contained in this report is at your own risk. This document is not, and should not be construed as, an offer to sell or solicitation to buy any commodities. This document Jun not be reproduced, distributed or published, in whole or in part, by any recipient hereof for any purpose without prior permission from the Company. IASL and its affiliates and/ or their officers, directors and employees Jun have positions in any commodities mentioned in this document (or in any related investment) and Jun from time to time add to or dispose of any such commodities (or investment). Please see the detailed disclaimer at <http://www.agriwatch.com/Disclaimer.asp>
 © 2014 Indian Agribusiness Systems Pvt Ltd.