

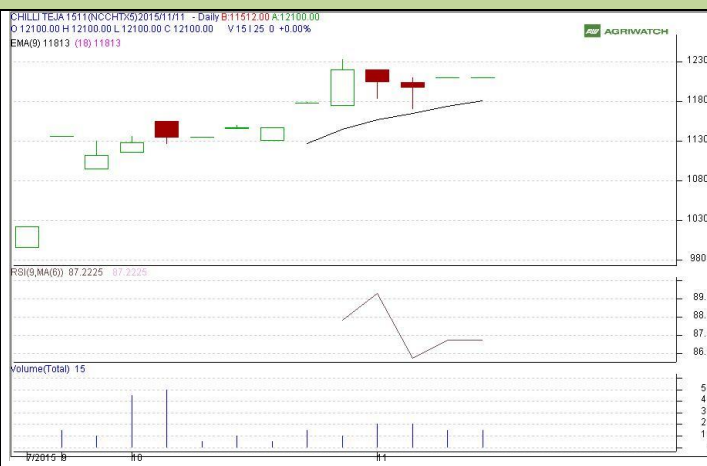
Commodity: Chilli
Contract: Dec

Exchange: NCDEX
Expiry: Dec 18th, 2015

CHILLI

Technical Commentary:

There is lower volume and open interest in the market. Market participants are suggested to wait for few days.



Strategy:

Intraday Supports & Resistances			S2	S1	PCP	R1	R2
Chilli	NCDEX	Dec	--	--	--	--	--
Intraday Trade Call			Call	Entry	T1	T2	SL
Chilli	NCDEX	Dec	--	--	--	--	--

Do not carry forward the position until the next day

Commodity: Turmeric
Contract: Dec

Exchange: NCDEX
Expiry: Dec 18th 2015

TURMERIC

Technical Commentary:

Candlestick chart indicates indecision situation in the market, overall trend is bullish. RSI is moving flat in overbought zone indicates prices may correct in the market. Volumes are supporting the prices.



Strategy: Wait

			S2	S1	PCP	R1	R2
Turmeric	NCDEX	Dec	9500	9700	9900	10200	10300
Intraday Trade Call			Call	Entry	T1	T2	SL
Turmeric	NCDEX	Dec	Wait	--	--	--	--

Do not carry forward the position until the next day.

Commodity: Coriander
Contract: Dec

Exchange: NCDEX
Expiry: Dec 18th, 2015

CORIANDER

Technical Commentary:

Candlestick chart indicates indecision situation in the market. Volumes are not supporting the prices. RSI moving down in neutral zone indicates prices may go down in short term.



Strategy: Wait

Intraday Supports & Resistances			S2	S1	PCP	R1	R2
Coriander	NCDEX	Dec	10000	10400	10530	11000	11200
Intraday Trade Call			Call	Entry	T1	T2	SL
Coriander	NCDEX	Dec	Wait	--	--	--	--

Do not carry forward the position until the next day

Commodity: Jeera (Cumin Seed)
Contract: Dec

Exchange: NCDEX
Expiry: Dec 18th, 2015

JEERA

Technical Commentary:

Candlestick chart formation reveals indecision situation in the market. RSI moving up in neutral zone in the market indicates prices may go up in short term. Volumes are supporting the prices.



Strategy: Buy

Intraday Supports & Resistances			S2	S1	PCP	R1	R2
Jeera	NCDEX	Dec	15300	15500	15785	16150	16200
Intraday Trade Call			Call	Entry	T1	T2	SL
Jeera	NCDEX	Dec	Buy	Above 15700	16000	16100	15520

Do not carry forward the position until the next day

Commodity: Cardamom
Contract: Dec
Exchange: MCX
Expiry: Dec 15th, 2015
CARDAMOM
Technical Commentary:

Candlestick formation reveals indecision situation in the market. **RSI is moving down in oversold zone in the market, prices may correct in the market.** Volumes are supporting the prices.


Strategy: Wait

Intraday Supports & Resistances			S2	S1	PCP	R1	R2
Cardamom	MCX	Dec	650	670	688	710	720
Intraday Trade Call			Call	Entry	T1	T2	SL
Cardamom	MCX	Dec	Wait	--	--	--	--

Do not carry forward the position until the next day

Disclaimer

The information and opinions contained in the document have been compiled from sources believed to be reliable. The company does not warrant its accuracy, completeness and correctness. Use of data and information contained in this report is at your own risk. This document is not, and should not be construed as, an offer to sell or solicitation to buy any commodities. This document Jun not be reproduced, distributed or published, in whole or in part, by any recipient hereof for any purpose without prior permission from the Company. IASL and its affiliates and/or their officers, directors and employees Jun have positions in any commodities mentioned in this document (or in any related investment) and Jun from time to time add to or dispose of any such commodities (or investment). Please see the detailed disclaimer at <http://www.agriwatch.com/Disclaimer.asp>
 © 2014 Indian Agribusiness Systems Pvt Ltd.