

Commodity: Chilli
Contract: Dec

Exchange: NCDEX
Expiry: Dec 18th, 2015

CHILLI

Technical Commentary:

There is lower volume and open interest in the market. Market participants are suggested to wait for few days.

Strategy:

Intraday Supports & Resistances			S2	S1	PCP	R1	R2
Chilli	NCDEX	Dec	--	--	--	--	--
Intraday Trade Call			Call	Entry	T1	T2	SL
Chilli	NCDEX	Dec	--	--	--	--	--

Do not carry forward the position until the next day

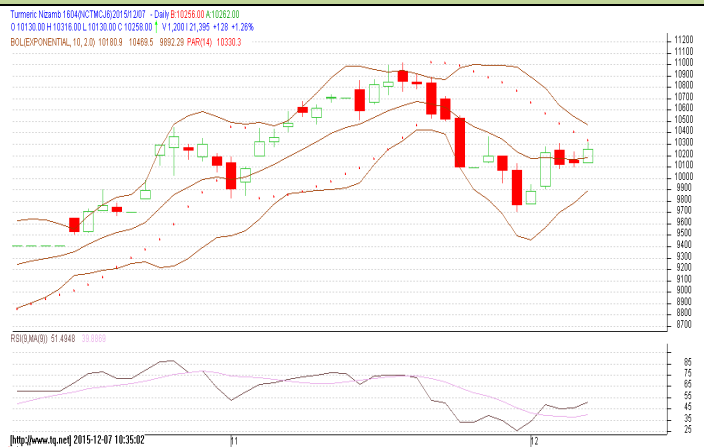
Commodity: Turmeric
Contract: Apr

Exchange: NCDEX
Expiry: Apr 20th 2015

TURMERIC

Technical Commentary:

Candlestick chart indicates bullish sentiment in the market. RSI is moving up in neutral zone indicates prices may go up in the market. Volumes are supporting the prices.



Strategy: Buy

			S2	S1	PCP	R1	R2
Turmeric	NCDEX	Apr	9600	9800	10130	10550	10600
Intraday Trade Call			Call	Entry	T1	T2	SL
Turmeric	NCDEX	Apr	Buy	Above 10150	10300	10370	10060

Do not carry forward the position until the next day.

Commodity: Coriander
Contract: Dec
Exchange: NCDEX
Expiry: Dec 18th, 2015
CORIANDER
Technical Commentary:

Candlestick chart indicates indecision situation in the market. Volumes are not supporting the prices. RSI moving down in neutral zone indicates prices may go down in short term.


Strategy: Wait

Intraday Supports & Resistances			S2	S1	PCP	R1	R2
Coriander	NCDEX	Dec	9900	10000	10226	10300	10500
Intraday Trade Call			Call	Entry	T1	T2	SL
Coriander	NCDEX	Dec	Wait	--	--	--	--

Do not carry forward the position until the next day

Commodity: Jeera (Cumin Seed)
Contract: Dec
Exchange: NCDEX
Expiry: Dec 18th, 2015
JEERA
Technical Commentary:

Candlestick chart formation reveals range bound movement in the market. RSI moving up in neutral zone in the market. Volumes are supporting the prices.


Strategy: Sell

Intraday Supports & Resistances			S2	S1	PCP	R1	R2
Jeera	NCDEX	Dec	15500	15600	15790	16120	16150
Intraday Trade Call			Call	Entry	T1	T2	SL
Jeera	NCDEX	Dec	Sell	Below 15750	15650	15610	15810

Do not carry forward the position until the next day

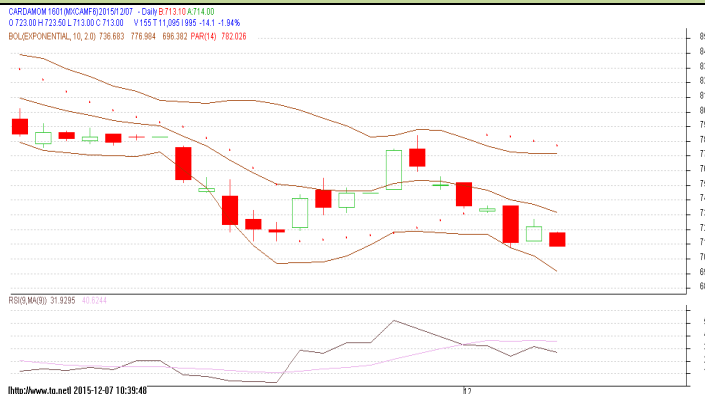
Commodity: Cardamom
Contract: Jan

Exchange: MCX
Expiry: Jan 15th, 2015

CARDAMOM

Technical Commentary:

Candlestick formation reveals bearish sentiment in the market. RSI is moving down in oversold zone prices may correct in the market. Volumes are supporting the prices.



Strategy: Sell

Intraday Supports & Resistances			S2	S1	PCP	R1	R2
Cardamom	MCX	Jan	690	695	727.1	738.9	744.8
Intraday Trade Call			Call	Entry	T1	T2	SL
Cardamom	MCX	Jan	Sell	Below 725	715	710	731

Do not carry forward the position until the next day

Disclaimer

The information and opinions contained in the document have been compiled from sources believed to be reliable. The company does not warrant its accuracy, completeness and correctness. Use of data and information contained in this report is at your own risk. This document is not, and should not be construed as, an offer to sell or solicitation to buy any commodities. This document Jun not be reproduced, distributed or published, in whole or in part, by any recipient hereof for any purpose without prior permission from the Company. IASL and its affiliates and/ or their officers, directors and employees Jun have positions in any commodities mentioned in this document (or in any related investment) and Jun from time to time add to or dispose of any such commodities (or investment). Please see the detailed disclaimer at <http://www.agriwatch.com/Disclaimer.asp>
 © 2015 Indian Agribusiness Systems Pvt Ltd.