

Commodity: Chilli
Contract: Dec
Exchange: NCDEX
Expiry: Dec 18th, 2015
CHILLI
Technical Commentary:

There is lower volume and open interest in the market. Market participants are suggested to wait for few days.

Strategy:

| Intraday Supports & Resistances | | | S2 | S1 | PCP | R1 | R2 |
|---------------------------------|-------|-----|------|-------|-----|----|----|
| Chilli | NCDEX | Dec | -- | -- | -- | -- | -- |
| Intraday Trade Call | | | Call | Entry | T1 | T2 | SL |
| Chilli | NCDEX | Dec | -- | -- | -- | -- | -- |

Do not carry forward the position until the next day

Commodity: Turmeric
Contract: Apr
Exchange: NCDEX
Expiry: Apr 20th 2015
TURMERIC
Technical Commentary:

Candlestick chart indicates bullish sentiment in the market. RSI is moving up in neutral zone indicates prices may go up in the market. Volumes are supporting the prices.


Strategy: Sell

| | | | S2 | S1 | PCP | R1 | R2 |
|---------------------|-------|-----|-------------|-------------|-------|-------|-------|
| Turmeric | NCDEX | Apr | 9600 | 9800 | 10290 | 10550 | 10600 |
| Intraday Trade Call | | | Call | Entry | T1 | T2 | SL |
| Turmeric | NCDEX | Apr | Sell | Below 10370 | 10270 | 10220 | 10430 |

Do not carry forward the position until the next day.

Commodity: Coriander
Contract: Dec

Exchange: NCDEX
Expiry: Dec 18th, 2015

CORIANDER

Technical Commentary:

Candlestick chart indicates indecision situation in the market. Volumes are not supporting the prices. RSI moving down in neutral zone indicates prices may go down in short term.



Strategy: Wait

| Intraday Supports & Resistances | | | S2 | S1 | PCP | R1 | R2 |
|---------------------------------|-------|-----|------|-------|-------|-------|-------|
| Coriander | NCDEX | Dec | 9900 | 10000 | 10204 | 10300 | 10500 |
| Intraday Trade Call | | | Call | Entry | T1 | T2 | SL |
| Coriander | NCDEX | Dec | Wait | -- | -- | -- | -- |

Do not carry forward the position until the next day

Commodity: Jeera (Cumin Seed)
Contract: Dec

Exchange: NCDEX
Expiry: Dec 18th, 2015

JEERA

Technical Commentary:

Weak sentiments witnessed on charts. RSI moving up in neutral zone in the market. Volumes are supporting the prices.



Strategy: Sell

| Intraday Supports & Resistances | | | S2 | S1 | PCP | R1 | R2 |
|---------------------------------|-------|-----|-------|-------------|-------|-------|-------|
| Jeera | NCDEX | Dec | 14800 | 15220 | 15545 | 16120 | 16150 |
| Intraday Trade Call | | | Call | Entry | T1 | T2 | SL |
| Jeera | NCDEX | Dec | Sell | Below 15500 | 15300 | 15220 | 15620 |

Do not carry forward the position until the next day

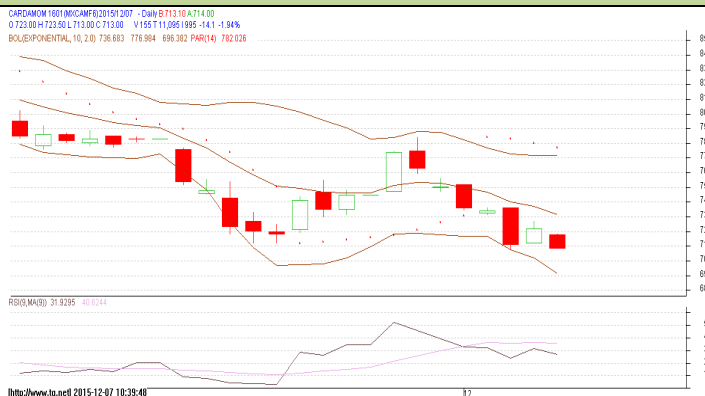
Commodity: Cardamom
Contract: Jan

Exchange: MCX
Expiry: Jan 15th, 2015

CARDAMOM

Technical Commentary:

Candlestick formation reveals bearish sentiment in the market. RSI is moving down in oversold zone prices may correct in the market. Volumes are supporting the prices.



Strategy: Buy

| Intraday Supports & Resistances | | | S2 | S1 | PCP | R1 | R2 |
|---------------------------------|-----|-----|------|-----------|-------|-------|-------|
| Cardamom | MCX | Jan | 690 | 695 | 708.1 | 738.9 | 744.8 |
| Intraday Trade Call | | | Call | Entry | T1 | T2 | SL |
| Cardamom | MCX | Jan | Buy | Above 702 | 712 | 717 | 696 |

Do not carry forward the position until the next day

Disclaimer

The information and opinions contained in the document have been compiled from sources believed to be reliable. The company does not warrant its accuracy, completeness and correctness. Use of data and information contained in this report is at your own risk. This document is not, and should not be construed as, an offer to sell or solicitation to buy any commodities. This document Jun not be reproduced, distributed or published, in whole or in part, by any recipient hereof for any purpose without prior permission from the Company. IASL and its affiliates and/ or their officers, directors and employees Jun have positions in any commodities mentioned in this document (or in any related investment) and Jun from time to time add to or dispose of any such commodities (or investment). Please see the detailed disclaimer at <http://www.agriwatch.com/Disclaimer.asp>
 © 2015 Indian Agribusiness Systems Pvt Ltd.