

Commodity: Turmeric
Contract: Aug

Exchange: NCDEX
Expiry: Aug 19th 2016

TURMERIC

Technical Commentary:

Candlestick chart pattern indicates indecision situation in the market. RSI is moving down in neutral zone indicates prices may go down in the market. Volumes are supporting the prices.



Strategy: Wait

			S2	S1	PCP	R1	R2
Turmeric	NCDEX	Aug	8100	8200	8288	8400	8500
Intraday Trade Call			Call	Entry	T1	T2	SL
Turmeric	NCDEX	Aug	Wait	--	--	--	--

Do not carry forward the position until the next day.

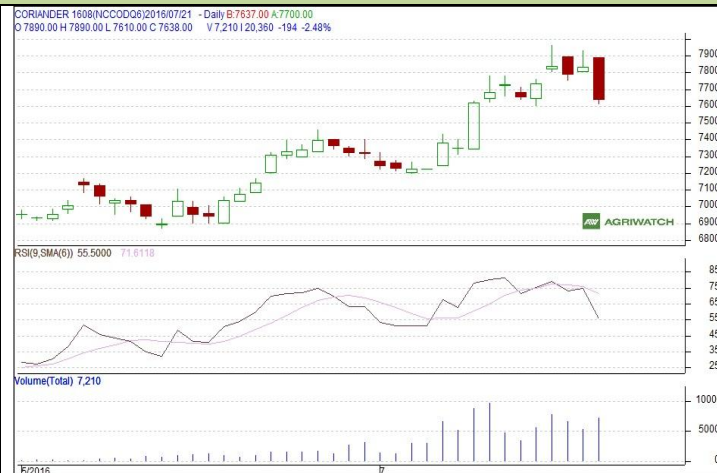
Commodity: Coriander
Contract: Aug

Exchange: NCDEX
Expiry: Aug 19th, 2016

CORIANDER

Technical Commentary:

Candlestick chart indicates prices not sustain at higher levels in the market. Volumes are supporting the prices. RSI moving down in neutral zone indicates prices go down in the market.



Strategy: Sell

Intraday Supports & Resistances			S2	S1	PCP	R1	R2
Coriander	NCDEX	Aug	7400	7500	7638	7750	7800
Intraday Trade Call			Call	Entry	T1	T2	SL
Coriander	NCDEX	Aug	Sell	Below 7650	7550	7500	7710

Do not carry forward the position until the next day

Commodity: Jeera (Cumin Seed)
Contract: Aug
Exchange: NCDEX
Expiry: Aug 19th, 2016
JEERA
Technical Commentary:

Candlestick chart formation indicates indecision situation in the market. RSI moving down in neutral zone indicates prices may go down in the market. Volumes are supporting the prices. **19500 levels is a strong Resistance level for short term, if it breaks market likely to move upside.**


Strategy: Wait
Intraday Supports & Resistances

			S2	S1	PCP	R1	R2
Jeera	NCDEX	Aug	18500	18700	19195	19700	20000
Intraday Trade Call			Call	Entry	T1	T2	SL
Jeera	NCDEX	Aug	Wait	--	--	--	--

Do not carry forward the position until the next day

Commodity: Cardamom
Contract: Aug
Exchange: MCX
Expiry: Aug 12th, 2016
CARDAMOM
Technical Commentary:

Candlestick chart formation indicates bullish sentiment in the market. **RSI is moving up in overbought zone indicates prices may correct in the market.** Volumes are supporting the prices.


Strategy: Buy
Intraday Supports & Resistances

			620	S1	PCP	R1	R2
Cardamom	MCX	Aug	900	910	929	955	960
Intraday Trade Call			Call	Entry	T1	T2	SL
Cardamom	MCX	Aug	Buy	Above 925	945	950	916

Do not carry forward the position until the next day



Disclaimer

The information and opinions contained in the document have been compiled from sources believed to be reliable. The company does not warrant its accuracy, completeness and correctness. Use of data and information contained in this report is at your own risk. This document is not, and should not be construed as, an offer to sell or solicitation to buy any commodities. This document Jun not be reproduced, distributed or published, in whole or in part, by any recipient hereof for any purpose without prior permission from the Company. IASL and its affiliates and/or their officers, directors and employees Jun have positions in any commodities mentioned in this document (or in any related investment) and Jun from time to time add to or dispose of any such commodities (or investment). Please see the detailed disclaimer at <http://www.agriwatch.com/Disclaimer.asp>

© 2016 Indian Agribusiness Systems Pvt Ltd.