

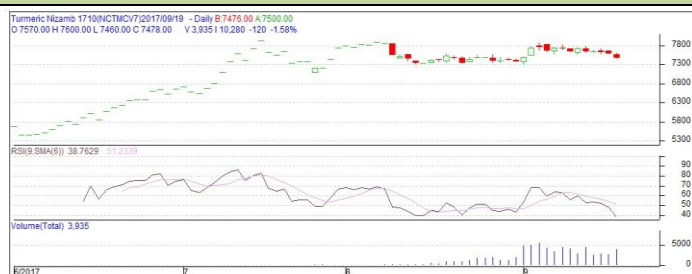
Commodity: Turmeric
Contract: Oct

Exchange: NCDEX
Expiry: Oct 13th 2017

TURMERIC

Technical Commentary :

Candlestick chart pattern indicates range bound movement to bearish sentiment in the market. RSI is moving down in neutral region in the market.



Strategy: Sell

			S2	S1	PCP	R1	R2
Turmeric	NCDEX	Oct	7100	7200	7630	7700	7750
Intraday Trade Call			Call	Entry	T1	T2	SL
Turmeric	NCDEX	Oct	Buy	Above 7500	7400	7300	7560

Do not carry forward the position until the next day.

Commodity: Coriander
Contract: Oct

Exchange: NCDEX
Expiry: Oct 13th, 2017

CORIANDER

Technical Commentary:

Candlestick chart indicates indecision situation in the market. Volumes are supporting the prices. RSI moving down in oversold zone indicates prices correct in the market.



Strategy: Wait

Intraday Supports & Resistances			S2	S1	PCP	R1	R2
Coriander	NCDEX	Oct	4600	4650	4843	4950	5050
Intraday Trade Call			Call	Entry	T1	T2	SL
Coriander	NCDEX	Oct	Wait	--	--	--	--

Do not carry forward the position until the next day

Commodity: Black Pepper
Contract: Oct

Exchange: NCDEX
Expiry: Oct 18th, 2017

Black Pepper

Technical Commentary:

Candlestick chart indicates range bound movement in the market. Volumes are supporting the prices. **RSI moving down in oversold region prices may correct in the market.**



Strategy: Sell

Intraday Supports & Resistances			S2	S1	PCP	R1	R2
Black Pepper	NCDEX	Oct	44000	44100	44905	45400	45800
Intraday Trade Call			Call	Entry	T1	T2	SL
Black Pepper	NCDEX	Oct	Sell	Below 44500	44000	43000	44800

Do not carry forward the position until the next day

Commodity: Jeera (Cumin Seed)
Contract: Oct

Exchange: NCDEX
Expiry: Oct 18th, 2017

JEERA

Technical Commentary:

Candlestick chart formation indicates indecision situation in the market. RSI moving down in neutral region indicates prices may go down in the market. Volumes are supporting the prices.



Strategy: Wait

Intraday Supports & Resistances			S2	S1	PCP	R1	R2
Jeera	NCDEX	Oct	19200	19300	19695	19900	20000
Intraday Trade Call			Call	Entry	T1	T2	SL
Jeera	NCDEX	Oct	Wait	--	--	--	--

Do not carry forward the position until the next day

Commodity: Cardamom

Contract: Oct

Exchange: MCX

Expiry: Oct 13th, 2017

CARDAMOM

Technical Commentary:

Candlestick chart formation indicates prices not sustain at higher levels in the market. RSI is moving down in neutral region indicates prices may go down in the market. Volumes are supporting the prices.



Strategy: Wait

Intraday Supports & Resistances			S2	S1	PCP	R1	R2
Cardamom	MCX	Oct	1100	1120	1151	1220	1240
Intraday Trade Call			Call	Entry	T1	T2	SL
Cardamom	MCX	Oct	Wait	--	--	--	--

Do not carry forward the position until the next day

Disclaimer

The information and opinions contained in the document have been compiled from sources believed to be reliable. The company does not warrant its accuracy, completeness and correctness. Use of data and information contained in this report is at your own risk. This document is not, and should not be construed as, an offer to sell or solicitation to buy any commodities. This document Jun not be reproduced, distributed or published, in whole or in part, by any recipient hereof for any purpose without prior permission from the Company. IASL and its affiliates and/or their officers, directors and employees Jun have positions in any commodities mentioned in this document (or in any related investment) and Jun from time to time add to or dispose of any such commodities (or investment). Please see the detailed disclaimer at <http://www.agriwatch.com/Disclaimer.asp>
© 2017 Indian Agribusiness Systems Ltd.