

**Commodity: Turmeric**  
**Contract: Nov**

**Exchange: NCDEX**  
**Expiry: Nov 20<sup>th</sup> 2017**

### TURMERIC

#### Technical Commentary :

Candlestick chart pattern indicates range bound movement in the market. RSI is moving up in neutral region in the market. Volumes are not supporting the prices.



Strategy: Wait

			S2	S1	PCP	R1	R2
Turmeric	NCDEX	Nov	7000	7100	7244	7400	7500
Intraday Trade Call			Call	Entry	T1	T2	SL
Turmeric	NCDEX	Nov	Wait	--	--	--	--

Do not carry forward the position until the next day.

**Commodity: Coriander**  
**Contract: Nov**

**Exchange: NCDEX**  
**Expiry: Nov 20<sup>th</sup>, 2017**

### CORIANDER

#### Technical Commentary:

Candlestick chart indicates bearish sentiment in the market. Volumes are not supporting the prices. RSI moving down in neutral zone indicates prices may go down in the market.



Strategy: Sell

Intraday Supports & Resistances			S2	S1	PCP	R1	R2
Coriander	NCDEX	Nov	4600	4700	4823	5000	5100
Intraday Trade Call			Call	Entry	T1	T2	SL
Coriander	NCDEX	Nov	Sell	Below 4900	4800	4700	4960

Do not carry forward the position until the next day

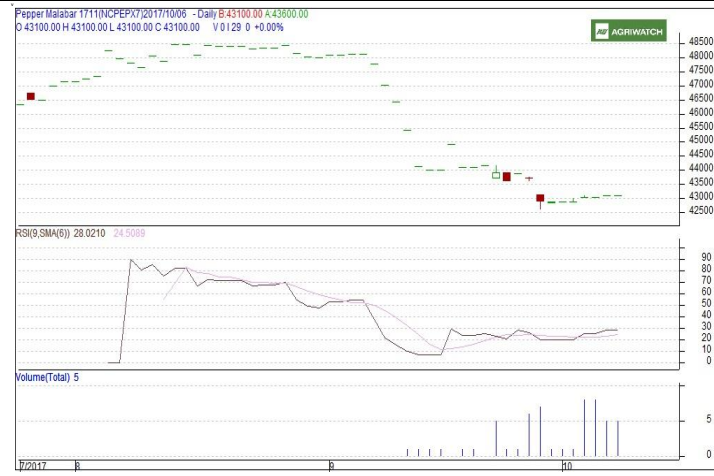
**Commodity: Black Pepper**  
**Contract: Nov**

**Exchange: NCDEX**  
**Expiry: Nov 20<sup>th</sup>, 2017**

### Black Pepper

#### Technical Commentary:

Candlestick chart indicates range bound movement in the market. Volumes are supporting the prices. **RSI moving up in oversold region prices may correct in the market.**



Strategy: Wait

Intraday Supports & Resistances			S2	S1	PCP	R1	R2
Black Pepper	NCDEX	Nov	43000	43500	44035	44500	45000
Intraday Trade Call			Call	Entry	T1	T2	SL
Black Pepper	NCDEX	Nov	Wait	--	--	--	--

Do not carry forward the position until the next day

**Commodity: Jeera (Cumin Seed)**  
**Contract: Nov**

**Exchange: NCDEX**  
**Expiry: Nov 20<sup>th</sup>, 2017**

### JEERA

#### Technical Commentary:

Candlestick chart formation indicates bearish sentiment in the market. *RSI moving down in oversold region indicates prices may correct in the market.* Volumes are not supporting the prices.



Strategy: Sell

Intraday Supports & Resistances			S2	S1	PCP	R1	R2
Jeera	NCDEX	Nov	18500	18600	18880	19100	19200
Intraday Trade Call			Call	Entry	T1	T2	SL
Jeera	NCDEX	Nov	Sell	Below 18900	18700	18600	19020

Do not carry forward the position until the next day

**Commodity: Cardamom**  
**Contract: Nov**

**Exchange: MCX**  
**Expiry: Nov 15<sup>th</sup>, 2017**

### CARDAMOM

#### Technical Commentary:

Candlestick chart formation indicates bearish sentiment in the market. RSI is moving down in neutral region indicates prices may go down in the market. Volumes are not supporting the prices.



#### Strategy: Sell

Intraday Supports & Resistances			S2	S1	PCP	R1	R2
Cardamom	MCX	Nov	1020	1030	1059	1080	1090
Intraday Trade Call			Call	Entry	T1	T2	SL
Cardamom	MCX	Nov	<b>Sell</b>	Below 1060	1040	1030	1072

Do not carry forward the position until the next day

#### Disclaimer

The information and opinions contained in the document have been compiled from sources believed to be reliable. The company does not warrant its accuracy, completeness and correctness. Use of data and information contained in this report is at your own risk. This document is not, and should not be construed as, an offer to sell or solicitation to buy any commodities. This document Jun not be reproduced, distributed or published, in whole or in part, by any recipient hereof for any purpose without prior permission from the Company. IASL and its affiliates and/or their officers, directors and employees Jun have positions in any commodities mentioned in this document (or in any related investment) and Jun from time to time add to or dispose of any such commodities (or investment). Please see the detailed disclaimer at <http://www.agriwatch.com/Disclaimer.asp>  
© 2017 Indian Agribusiness Systems Ltd.