

Commodity: Turmeric
Contract: Apr
Exchange: NCDEX
Expiry: Apr 16th 2018
TURMERIC
Technical Commentary :

Candlestick chart pattern indicates prices correction in the market. RSI is moving down in neutral zone in the market. Volumes are not supporting the prices in the market.


Strategy: Sell

Intraday Supports & Resistances			S2	S1	PCP	R1	R2
Turmeric	NCDEX	Apr	6400	6500	6644	6750	6800
Intraday Trade Call			Call	Entry	T1	T2	SL
Turmeric	NCDEX	Apr	Sell	Below 6680	6600	6550	6728

Do not carry forward the position until the next day.

Commodity: Coriander
Contract: Jan
Exchange: NCDEX
Expiry: Jan 18th 2018
CORIANDER
Technical Commentary:

Candlestick chart indicates prices correction in the market. RSI moving down in neutral zone in the market. Volumes are supporting the prices in the market.


Strategy: Buy

Intraday Supports & Resistances			S2	S1	PCP	R1	R2
Coriander	NCDEX	Jan	6300	6400	6688	6900	7000
Intraday Trade Call			Call	Entry	T1	T2	SL
Coriander	NCDEX	Jan	Buy	Above 6600	6800	6850	6480

Do not carry forward the position until the next day

Commodity: Jeera (Cumin Seed)
Contract: Jan

Exchange: NCDEX
Expiry: Jan 18th, 2018

JEERA

Technical Commentary:

Candlestick chart formation indicates bearish sentiment in the market. **RSI moving down in oversold region indicates prices may correct in the market.** Volumes are not supporting the prices in the market.



Strategy: Sell

Intraday Supports & Resistances			S2	S1	PCP	R1	R2
Jeera	NCDEX	Jan	18500	18600	18810	18900	19000
Intraday Trade Call			Call	Entry	T1	T2	SL
Jeera	NCDEX	Jan	Sell	Below 18800	18650	18600	18890

Do not carry forward the position until the next day

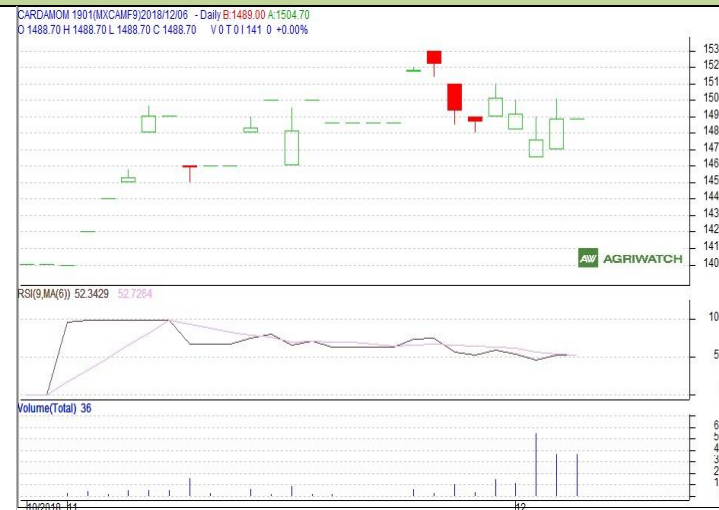
Commodity: Cardamom
Contract: Jan

Exchange: MCX
Expiry: Jan 15th, 2018

CARDAMOM

Technical Commentary:

Candlestick chart formation indicates range bound movement in the market. RSI moving up in neutral region in the market indicates prices may go up in short term. Volumes are supporting the prices in the market.



Strategy: Buy

Intraday Supports & Resistances			S2	S1	PCP	R1	R2
Cardamom	MCX	Jan	1450	1460	1488.7	1525	1530
Intraday Trade Call			Call	Entry	T1	T2	SL
Cardamom	MCX	Jan	Buy	Above 1485	1515	1520	1467

Do not carry forward the position until the next day



Disclaimer

The information and opinions contained in the document have been compiled from sources believed to be reliable. The company does not warrant its accuracy, completeness and correctness. Use of data and information contained in this report is at your own risk. This document is not, and should not be construed as, an offer to sell or solicitation to buy any commodities. This document Jun not be reproduced, distributed or published, in whole or in part, by any recipient hereof for any purpose without prior permission from the Company. IASL and its affiliates and/or their officers, directors and employees Jun have positions in any commodities mentioned in this document (or in any related investment) and Jun from time to time add to or dispose of any such commodities (or investment). Please see the detailed disclaimer at <http://www.agriwatch.com/Disclaimer.asp>

© 2018 Indian Agribusiness Systems Ltd.