

Commodity: Turmeric
Contract: Jun
Exchange: NCDEX
Expiry: Jun 20th 2019
TURMERIC
Technical Commentary :

Candlestick chart pattern indicates indecision situation in the market. RSI moving down in neutral region in the market indicates prices may go down in short term. Volumes are supporting the prices in the market.


Strategy: Wait

Intraday Supports & Resistances			S2	S1	PCP	R1	R2
Turmeric	NCDEX	Jun	6421	6456	6492	6530	6569
Intraday Trade Call			Call	Entry	T1	T2	SL
Turmeric	NCDEX	Jun	Wait	-	-	-	-

Do not carry forward the position until the next day.

Commodity: Coriander
Contract: Jun
Exchange: NCDEX
Expiry: Jun 20th 2019
CORIANDER
Technical Commentary:

Last candlestick indicates prices may go down in the market. RSI moving down in neutral zone indicates prices may go down in the market. Decrease in prices with higher OI indicates to short build up.


Strategy: Sell

Intraday Supports & Resistances			S2	S1	PCP	R1	R2
Coriander	NCDEX	Jun	7129	7179	7229	7311	7391
Intraday Trade Call			Call	Entry	T1	T2	SL
Coriander	NCDEX	Jun	Sell	7280	7230	7205	7310

Do not carry forward the position until the next day

Commodity: Jeera (Cumin Seed)
Contract: Jun

Exchange: NCDEX
Expiry: Jun 20th, 2019

JEERA
Technical Commentary:

Candlestick chart formation indicates firm situation in the market. RSI moving up in overbought region which might take correction in short term. Volumes are supporting the prices in the market.



Strategy: Buy

Intraday Supports & Resistances			S2	S1	PCP	R1	R2
Jeera	NCDEX	Jun	16945	17095	17245	17320	17395
Intraday Trade Call			Call	Entry	T1	T2	SL
Jeera	NCDEX	Jun	Buy	Above 17210	17270	17300	17174

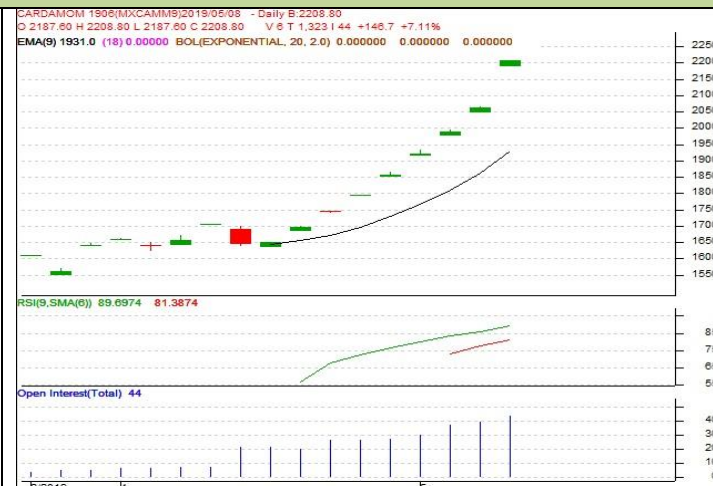
Do not carry forward the position until the next day

Commodity: Cardamom
Contract: May

Exchange: MCX
Expiry: May 15th, 2019

CARDAMOM
Technical Commentary:

Candlestick chart formation indicates bullish sentiment in the market. *RSI moving up in overbought region in the market indicates prices may correct in short term.* Volumes are not supporting the prices in the market. *Gap open market reported prices may fill this gap in short term.*



Strategy: Wait

Intraday Supports & Resistances			S2	S1	PCP	R1	R2
Cardamom	MCX	Jun	2180	2195	2208.8	2215	2222
Intraday Trade Call			Call	Entry	T1	T2	SL
Cardamom	MCX	Jun	Wait	-	-	-	-

Do not carry forward the position until the next day



Disclaimer

The information and opinions contained in the document have been compiled from sources believed to be reliable. The company does not warrant its accuracy, completeness and correctness. Use of data and information contained in this report is at your own risk. This document is not, and should not be construed as, an offer to sell or solicitation to buy any commodities. This document Jun not be reproduced, distributed or published, in whole or in part, by any recipient hereof for any purpose without prior permission from the Company. IASL and its affiliates and/or their officers, directors and employees Jun have positions in any commodities mentioned in this document (or in any related investment) and Jun from time to time add to or dispose of any such commodities (or investment). Please see the detailed disclaimer at <http://www.agriwatch.com/Disclaimer.asp>
© 2019 Indian Agribusiness Systems Ltd.