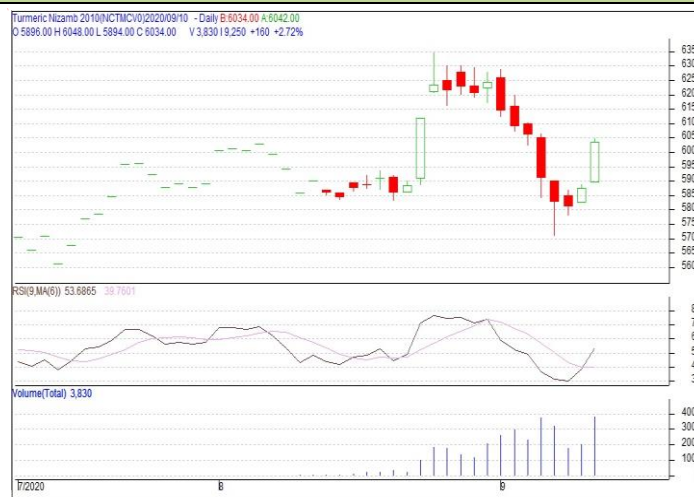


**Commodity: Turmeric**
**Contract: Oct**
**Exchange: NCDEX**
**Expiry: Oct 20<sup>th</sup> 2020**
**TURMERIC**
**Technical Commentary :**

Candlestick chart pattern indicates prices try to take support from lower levels in the market. RSI moving down in neutral region in the market. Volumes are supporting the prices in the market.


**Strategy: Buy**

Intraday Supports & Resistances			S2	S1	PCP	R1	R2
Turmeric	NCDEX	Oct	5800	5900	6036	6170	6200
Intraday Trade Call			Call	Entry	T1	T2	SL
Turmeric	NCDEX	Oct	Buy	Above 6030	6105	6150	5940

Do not carry forward the position until the next day.

**Commodity: Coriander**
**Contract: Oct**
**Exchange: NCDEX**
**Expiry: Oct 20<sup>th</sup> 2020**
**CORIANDER**
**Technical Commentary:**

Candlestick chart indicates prices trying to take support in the market. RSI moving down in neutral region in the market. Volumes are supporting the prices in the market.


**Strategy: Buy**

Intraday Supports & Resistances			S2	S1	PCP	R1	R2
Coriander	NCDEX	Oct	6600	6650	6780	6950	7000
Intraday Trade Call			Call	Entry	T1	T2	SL
Coriander	NCDEX	Oct	Buy	Above 6750	6850	6900	6690

Do not carry forward the position until the next day

**Commodity:** Jeera (Cumin Seed)  
**Contract:** Oct

**Exchange:** NCDEX  
**Expiry:** Oct 20<sup>th</sup>, 2020

**JEERA**
**Technical Commentary:**

Candlestick chart formation indicates bearish sentiment in the market. RSI moving down in neutral region in the market. Volumes are supporting the increase in prices in the market.



**Strategy:** Sell

Intraday Supports & Resistances			S2	S1	PCP	R1	R2
Jeera	NCDEX	Oct	13600	13700	13895	14050	14100
Intraday Trade Call			Call	Entry	T1	T2	SL
Jeera	NCDEX	Oct	Sell	Below 13920	13800	13750	14000

Do not carry forward the position until the next day

**Commodity:** Cardamom  
**Contract:** Sep

**Exchange:** MCX  
**Expiry:** Sep 15<sup>th</sup>, 2020

**CARDAMOM**
**Technical Commentary:**

Candlestick chart formation indicates prices trying to support in the market. RSI moving down in neutral region indicates prices may go down in short term. Volumes are supporting the prices in the market.



**Strategy:** Buy

Intraday Supports & Resistances			S2	S1	PCP	R1	R2
Cardamom	MCX	Sep	1600	1650	1750	1840	1860
Intraday Trade Call			Call	Entry	T1	T2	SL
Cardamom	MCX	Sep	Buy	Above 1750	1800	1820	1690

Do not carry forward the position until the next day



## Disclaimer

The information and opinions contained in the document have been compiled from sources believed to be reliable. The company does not warrant its accuracy, completeness and correctness. Use of data and information contained in this report is at your own risk. This document is not, and should not be construed as, an offer to sell or solicitation to buy any commodities. This document Jun not be reproduced, distributed or published, in whole or in part, by any recipient hereof for any purpose without prior permission from the Company. IASL and its affiliates and/or their officers, directors and employees Jun have positions in any commodities mentioned in this document (or in any related investment) and Jun from time to time add to or dispose of any such commodities (or investment). Please see the detailed disclaimer at <http://www.agriwatch.com/Disclaimer.asp>

© 2020 Indian Agribusiness Systems Ltd.