

**Commodity: Turmeric**
**Exchange: NCDEX**
**Contract: Sept**
**Expiry: Sept'20th 2022**
**TURMERIC**

**Technical Commentary:**

- As seen in the above chart, market is trading below 9, 18, 50 and 100 DMA, indicating bearish sentiments in the market.
- Market fell by 1.21%, during the day market made low at 7140, high at 7272 and closed at 7160.
- MACD and DIF indicating weak momentum in short run.
- RSI is near at 33, indicating weak buying strength.

Intraday Supports & Resistances			S2	S1	PCP	R1	R2
Turmeric	NCDEX	Sept	6800	7000	7160	7500	7700
Intraday Trade Call			Call	Entry	T1	T2	SL
Turmeric	NCDEX	Sept	Sell	7200	7150	7100	7250

Do not carry forward the position until the next day.

Commodity: Coriander  
Contract: Sept

Exchange: NCDEX  
Expiry: Sept 20<sup>th</sup> 2022

### CORIANDER



#### Technical Commentary:

- As depicted in the above chart, currently market is trading below 9, 18, 50 and 100 DMA can be characterized as immediate resistance.
- Market went marginally down by 0.02%, during the day market made low at 11064, high at 11230 and closed at 11182.
- MACD and DIF indicating weak momentum.
- RSI is near at 33 indicating weak buying strength.

Intraday Supports & Resistances			S2	S1	PCP	R1	R2
Coriander	NCDEX	Sept	10500	10800	11182	11800	12000
Intraday Trade Call			Call	Entry	T1	T2	SL
Coriander	NCDEX	Sept	BUY	11160	11300	11500	11000

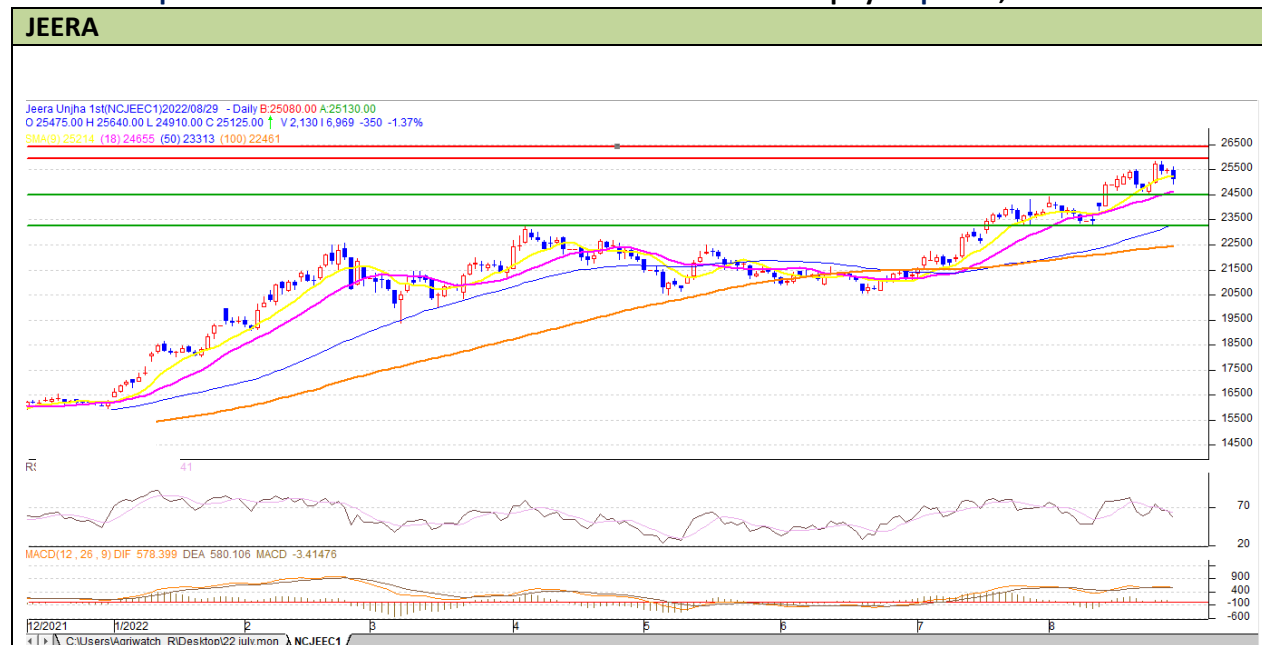
Do not carry forward the position until the next day

Commodity: Jeera (Cumin Seed)

Exchange: NCDEX

Contract: Sept

Expiry: Sept 20<sup>th</sup>, 2022



#### Technical Commentary:

- As seen in the above chart, market is moving in uptrend and making higher high.
- Market fell by 1.37% gain, during the day market made low at 24910, high at 24640 and closed at 25125.
- MACD and DIF indicating firm momentum.
- RSI near 60 indicating firm buying strength.

Intraday Supports & Resistances			S2	S1	PCP	R1	R2
Jeera	NCDEX	Sept	24000	24500	25125	26000	26500
Intraday Trade Call			Call	Entry	T1	T2	SL
Jeera	NCDEX	Sept	BUY	25100	25300	25500	24900

Do not carry forward the position until the next day

#### Disclaimer

The information and opinions contained in the document have been compiled from sources believed to be reliable. The company does not warrant its accuracy, completeness and correctness. Use of data and information contained in this report is at your own risk. This document is not, and should not be construed as, an offer to sell or solicitation to buy any commodities. This document Jun not be reproduced, distributed or published, in whole or in part, by any recipient hereof for any purpose without prior permission from the Company. IASL and its affiliates and/or their officers, directors and employees Jun have positions in any commodities mentioned in this document (or in any related investment) and Jun from time to time add to or dispose of any such commodities (or investment). Please see the detailed disclaimer at <http://www.agriwatch.com/Disclaimer.asp>  
© 2022 Indian Agribusiness Systems Ltd.