

**Commodity: Turmeric**
**Exchange: NCDEX**
**Contract: Apr**
**Expiry: Apr'20th 2023**
**TURMERIC**

**Technical Commentary:**

- As seen in the above chart, market is trading above 18, 50 and 100 DMA but it is trading below the 9 DMA, indicating slightly upward sentiments in the coming days.
- Market went down by 4.53%, during the day market made low at 7852, high at 8248 and closed at 7874.
- MACD and DIF indicating strong momentum in short run.
- RSI is declining from 78 to 53 in near 8 trading sessions.

Intraday Supports & Resistances			S2	S1	PCP	R1	R2
Turmeric	NCDEX	Apr	7500	7770	7874	8530	8745
Intraday Trade Call			Call	Entry	T1	T2	SL
Turmeric	NCDEX	Apr	Wait	--	--	--	--

Do not carry forward the position until the next day.

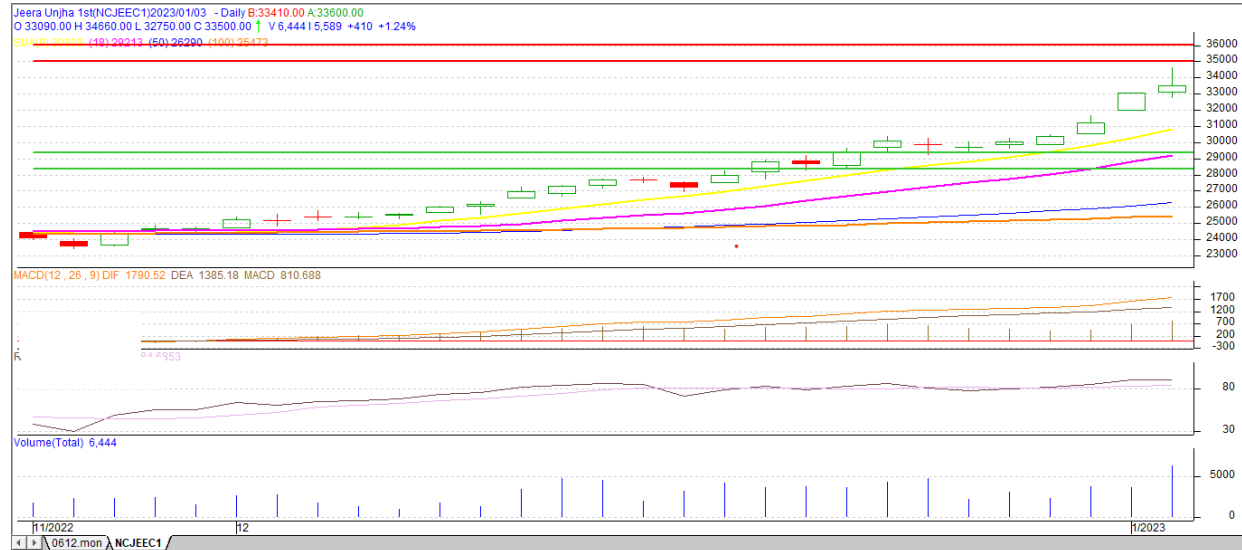
**Commodity: Coriander**  
**Contract: Jan**
**Exchange: NCDEX**  
**Expiry: Jan 20<sup>th</sup> 2023**
**CORIANDER**

**Technical Commentary:**

- As depicted in the above chart, currently market is trading below 18, 50 and 100 DMA but trading slightly above 9 DMA.
- Market went down by 1.47%, during the day market made low at 8020, high at 8240 and closed at 8060.
- MACD and DIF indicating weak momentum.
- RSI is near at 31 indicating weak buying strength.

Intraday Supports & Resistances			S2	S1	PCP	R1	R2
Coriander	NCDEX	<b>Sept</b>	7500	7725	8060	8437	8854
Intraday Trade Call			Call	Entry	T1	T2	SL
Coriander	NCDEX	<b>Sept</b>	<b>SELL</b>	8100	8090	8000	8250

Do not carry forward the position until the next day

**Commodity: Jeera (Cumin Seed)**  
**Contract: Jan**
**Exchange: NCDEX**  
**Expiry: Jan 20<sup>th</sup>, 2023**
**JEERA**

**Technical Commentary:**

- As seen in the above chart, market is moving in uptrend and making higher high.
- Market continued to report up by 5.11% during the day, market made low at 31940, high at 33050 and closed at 32815.
- MACD and DIF indicating very strong sentiment.
- RSI above 80 indicating overbought condition.

Intraday Supports & Resistances			S2	S1	PCP	R1	R2
Jeera	NCDEX	Sept	28300	29300	33500	35000	36000
Intraday Trade Call			Call	Entry	T1	T2	SL
Jeera	NCDEX	Sept	BUY	33650	34000	34500	33350

Do not carry forward the position until the next day

**Disclaimer**

The information and opinions contained in the document have been compiled from sources believed to be reliable. The company does not warrant its accuracy, completeness and correctness. Use of data and information contained in this report is at your own risk. This document is not, and should not be construed as, an offer to sell or solicitation to buy any commodities. This document Jun not be reproduced, distributed or published, in whole or in part, by any recipient hereof for any purpose without prior permission from the Company. IASL and its affiliates and/or their officers, directors and employees Jun have positions in any commodities mentioned in this document (or in any related investment) and Jun from time to time add to or dispose of any such commodities (or investment). Please see the detailed disclaimer at <http://www.agriwatch.com/Disclaimer.asp>  
 © 2022 Indian Agribusiness Systems Ltd.