

Commodity: Sugar
Contract: March

Exchange: NCDEX
Expiry: 20th Mar, 2014

SUGAR

SUGARM200 1403(NCSAMH4)2014/03/14 - Daily B:2982.00 A:2988.00
O 2955.00 H 2990.00 L 2951.00 C 2990.00 V 2,130 18,520 0 +0.00%
BOL(SIMPLE, 20, 2.0) 2841.85 2985.23 2698.47



Technical Commentary:

- Sugar prices are moving upward as chart depicts.
- RSI is in overbought region.
- Fall in OI and increase in price indicates short covering.

Strategy: Buy

Intraday Supports & Resistances			S2	S1	PCP	R1	R2
Sugar	NCDEX	March	2800	2850	2990	3050	3100
Intraday Trade Call			Call	Entry	T1	T2	SL
Sugar	NCDEX	March	Buy	2955	2990	3010	2935

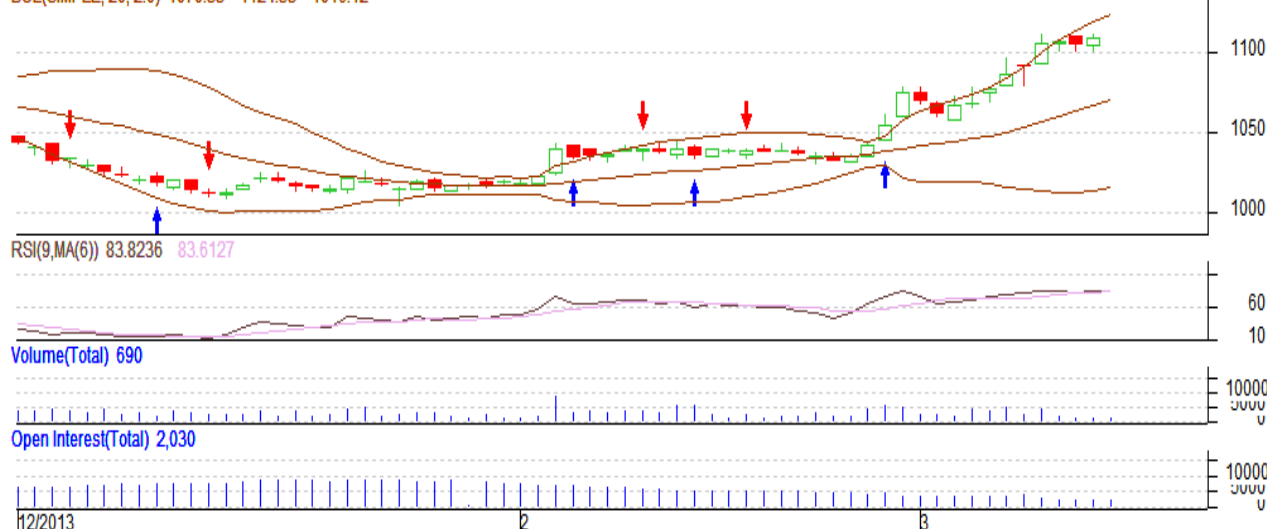
Do not carry forward the position until the next day.

Commodity: Gur
Contract: Mar
Exchange: NCDEX
Expiry: Mar 20th, 2013
GUR

GURCHMUZR 1403(NCCHMH4)2014/03/13 - Daily B:1106.00 A:1117.50

O 1109.00 H 1109.00 L 1109.00 C 1109.00 V 690 I 2,030 O +0.00%

BOL(SIMPLE, 20, 2.0) 1070.33 1124.53 1016.12


Technical Commentary:

- Gur prices show upward movement as chart depicts.
- RSI is in overbought region.
- Rise in price and fall in OI indicates short covering.

Strategy: Sell

Intraday Supports & Resistances			S2	S1	PCP	R1	R2
Gur	NCDEX	Mar	1070	1085	1109	1125	1140
Intraday Trade Call			Call	Entry	T1	T2	SL
Gur	NCDEX	Mar	Sell	1112	1106	1103	1115.5

Do not carry forward the position until the next day.

Disclaimer

The information and opinions contained in the document have been compiled from sources believed to be reliable. The company does not warrant its accuracy, completeness and correctness. Use of data and information contained in this report is at your own risk. This document is not, and should not be construed as, an offer to sell or solicitation to buy any commodities. This document may not be reproduced, distributed or published, in whole or in part, by any recipient hereof for any purpose without prior permission from the Company. IASL and its affiliates and/or their officers, directors and employees may have positions in any commodities mentioned in this document (or in any related investment) and may from time to time add to or dispose of any such commodities (or investment). Please see the detailed disclaimer at <http://www.agriwatch.com/Disclaimer.asp>

© 2014 Indian Agribusiness Systems Pvt Ltd.