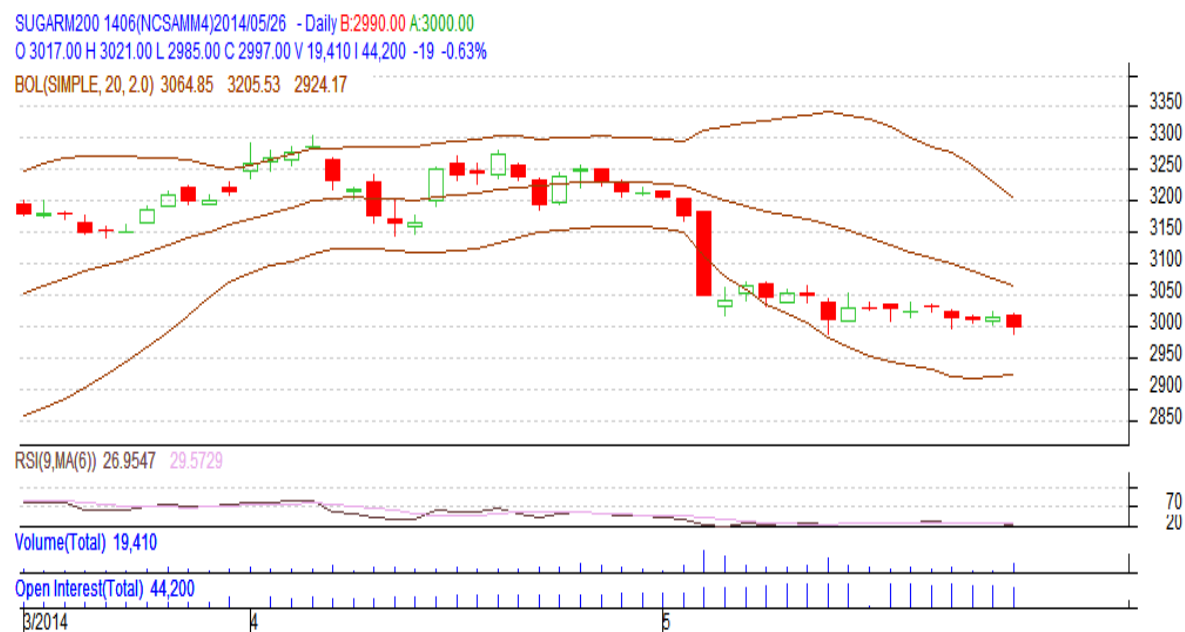


**Commodity: Sugar**  
**Contract: June**
**Exchange: NCDEX**  
**Expiry: 20<sup>th</sup> June, 2014**
**SUGAR**

**Technical Commentary:**

- Sugar prices are moving in an short downtrend as chart depicts.
- RSI is in neutral region.
- Last candlestick depicts indecision in the market.

**Strategy: Buy**

Intraday Supports & Resistances			S2	S1	PCP	R1	R2
Sugar	NCDEX	June	2845	2945	2997	3081	3105
Intraday Trade Call			Call	Entry	T1	T2	SL
Sugar	NCDEX	June	Buy	2995	3001	3004	2991.5

Do not carry forward the position until the next day.

**Commodity: Gur**  
**Contract: July**
**Exchange: NCDEX**  
**Expiry: July 20<sup>th</sup>, 2014**
**GUR**

GURCHMUZR 1407(NCCHMN4)2014/05/26 - Daily

O 1186.00 H 1189.00 L 1179.00 C 1180.50 V 3,800 I 9,020 -8 -0.67%

BOL(SIMPLE, 20, 2.0) 1216.08 1250.34 1181.81


**Technical Commentary:**

- Gur prices got downward correction as chart depicts.
- RSI is moving near to neutral region.
- Last candlestick depicts bearishness in the market.

**Strategy: Sell**

Intraday Supports & Resistances			S2	S1	PCP	R1	R2
Gur	NCDEX	July	1165	1171	1180.5	1212	1226
Intraday Trade Call			Call	Entry	T1	T2	SL
Gur	NCDEX	July	<b>Sell</b>	Below 1182	1179	1177.5	1183.7

Do not carry forward the position until the next day.

**Disclaimer**

The information and opinions contained in the document have been compiled from sources believed to be reliable. The company does not warrant its accuracy, completeness and correctness. Use of data and information contained in this report is at your own risk. This document is not, and should not be construed as, an offer to sell or solicitation to buy any commodities. This document may not be reproduced, distributed or published, in whole or in part, by any recipient hereof for any purpose without prior permission from the Company. IASL and its affiliates and/or their officers, directors and employees may have positions in any commodities mentioned in this document (or in any related investment) and may from time to time add to or dispose of any such commodities (or investment). Please see the detailed disclaimer at <http://www.agriwatch.com/Disclaimer.asp>