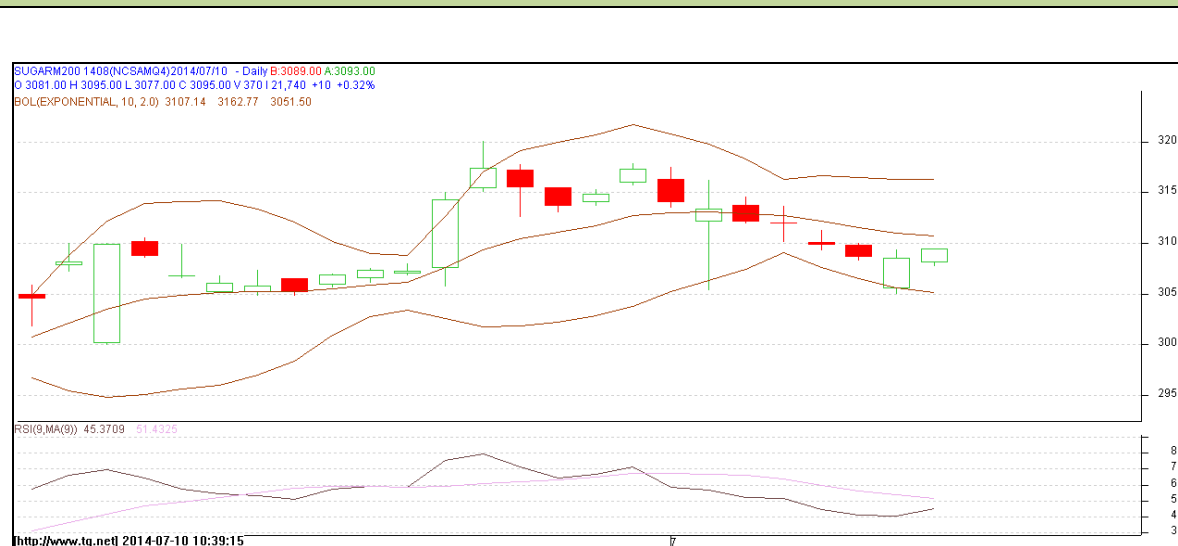


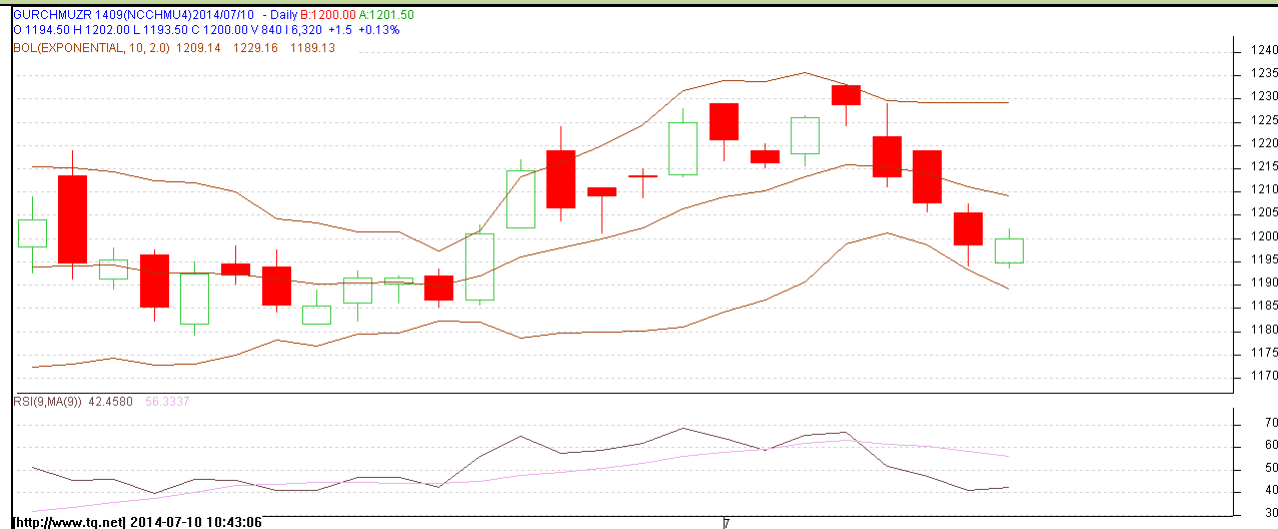
**Commodity: Sugar**  
**Contract: Aug**
**Exchange: NCDEX**  
**Expiry: 20<sup>th</sup> Aug, 2014**
**SUGAR**

**Technical Commentary:**

- Sugar prices are moving downwards as chart depicts.
- Prices are trading in neutral region.
- Last candlestick pattern depicts bullishness in the market.
- Directional movement indicators also suggest strong bear in the market.

**Strategy: Buy**

| Intraday Supports & Resistances |       |     | S2   | S1         | PCP  | R1   | R2   |
|---------------------------------|-------|-----|------|------------|------|------|------|
| Sugar                           | NCDEX | Aug | 3015 | 3055       | 3085 | 3201 | 3266 |
| Intraday Trade Call             |       |     | Call | Entry      | T1   | T2   | SL   |
| Sugar                           | NCDEX | Aug | Buy  | Above 3080 | 3090 | 3095 | 3074 |

Do not carry forward the position until the next day.

**Commodity: Gur**  
**Contract: Sept**
**Exchange: NCDEX**  
**Expiry: Sept 20<sup>th</sup>, 2014**
**GUR**

**Technical Commentary:**

- Gur prices are moving in a downward channel as chart depicts.
- RSI is moving near to oversold region.
- Last candlestick depicts bearishness in the market.

**Strategy: Sell**

| Intraday Supports & Resistances |       |      | S2          | S1         | PCP    | R1   | R2     |
|---------------------------------|-------|------|-------------|------------|--------|------|--------|
| Gur                             | NCDEX | Sept | 1181        | 1189       | 1198.5 | 1250 | 1274   |
| Intraday Trade Call             |       |      | Call        | Entry      | T1     | T2   | SL     |
| Gur                             | NCDEX | Sept | <b>Sell</b> | Below 1201 | 1195   | 1192 | 1204.5 |

Do not carry forward the position until the next day.

**Disclaimer**

The information and opinions contained in the document have been compiled from sources believed to be reliable. The company does not warrant its accuracy, completeness and correctness. Use of data and information contained in this report is at your own risk. This document is not, and should not be construed as, an offer to sell or solicitation to buy any commodities. This document may not be reproduced, distributed or published, in whole or in part, by any recipient hereof for any purpose without prior permission from the Company. IASL and its affiliates and/or their officers, directors and employees may have positions in any commodities mentioned in this document (or in any related investment) and may from time to time add to or dispose of any such commodities (or investment). Please see the detailed disclaimer at <http://www.agriwatch.com/Disclaimer.asp>