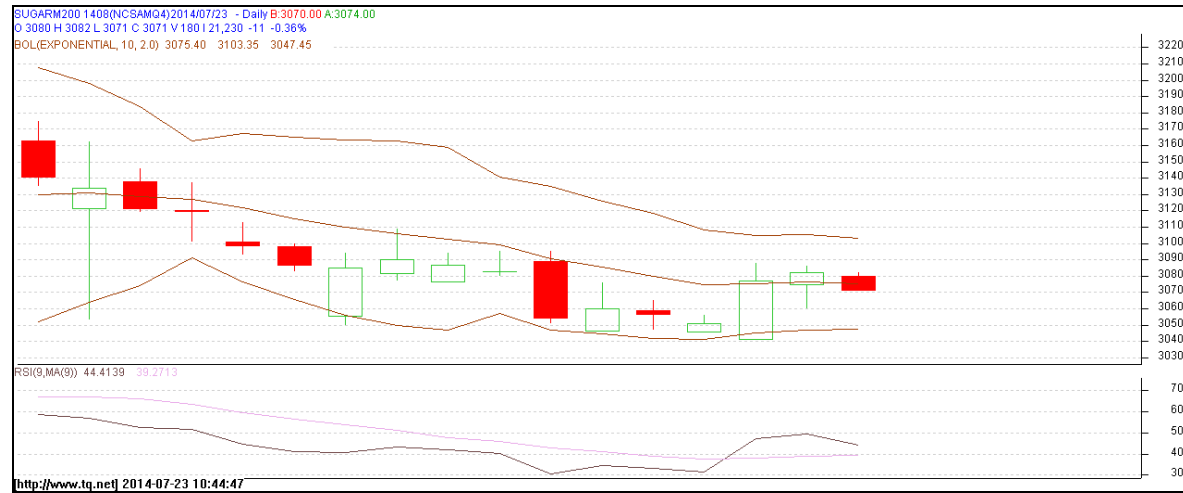


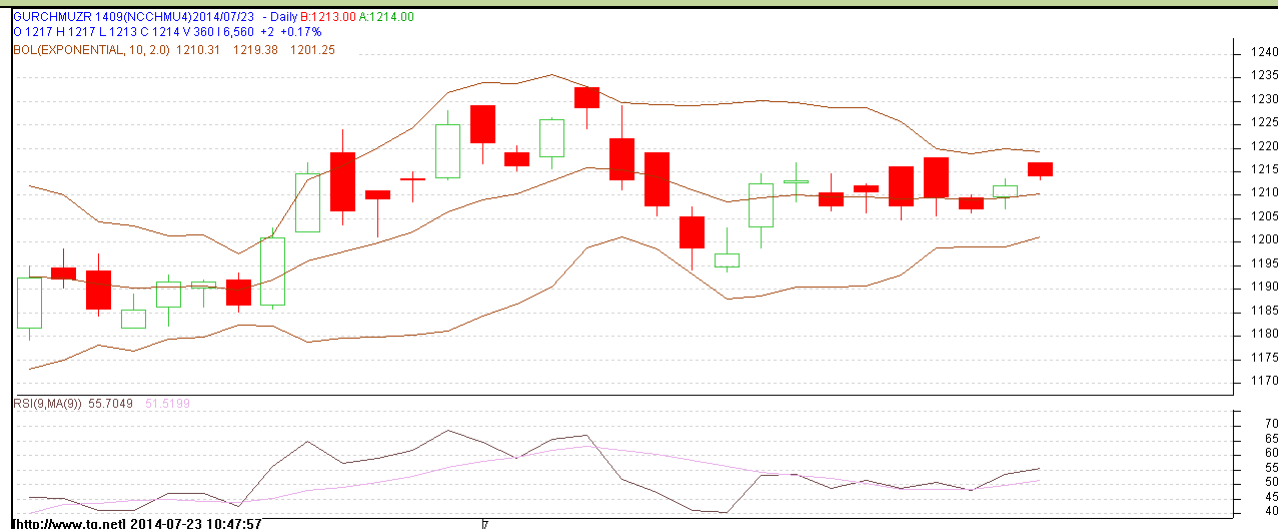
Commodity: Sugar
Contract: Aug
Exchange: NCDEX
Expiry: 20th Aug, 2014
SUGAR

Technical Commentary:

- Sugar prices are moving downwards as chart depicts.
- Prices are trading in neutral region.
- Last candlestick pattern depicts indecision in the market.

Strategy: Sell

| Intraday Supports & Resistances | | | S2 | S1 | PCP | R1 | R2 |
|---------------------------------|-------|-----|-------------|------------|------|------|------|
| Sugar | NCDEX | Aug | 2968 | 3002 | 3082 | 3201 | 3266 |
| Intraday Trade Call | | | Call | Entry | T1 | T2 | SL |
| Sugar | NCDEX | Aug | Sell | Below 3082 | 3072 | 3066 | 3088 |

Do not carry forward the position until the next day.

Commodity: Gur
Contract: Sept
Exchange: NCDEX
Expiry: Sept 20th, 2014
GUR

Technical Commentary:

- Gur prices are moving in a downward channel as chart depicts.
- RSI is moving near to oversold region.
- Last candlestick depicts bullishness in the market.

Strategy: Wait

| Intraday Supports & Resistances | | | S2 | S1 | PCP | R1 | R2 |
|---------------------------------|-------|------|------|-------|------|------|------|
| Gur | NCDEX | Sept | 1181 | 1189 | 1212 | 1250 | 1274 |
| Intraday Trade Call | | | Call | Entry | T1 | T2 | SL |
| Gur | NCDEX | Sept | Wait | - | - | - | - |

Do not carry forward the position until the next day.

Disclaimer

The information and opinions contained in the document have been compiled from sources believed to be reliable. The company does not warrant its accuracy, completeness and correctness. Use of data and information contained in this report is at your own risk. This document is not, and should not be construed as, an offer to sell or solicitation to buy any commodities. This document may not be reproduced, distributed or published, in whole or in part, by any recipient hereof for any purpose without prior permission from the Company. IASL and its affiliates and/or their officers, directors and employees may have positions in any commodities mentioned in this document (or in any related investment) and may from time to time add to or dispose of any such commodities (or investment). Please see the detailed disclaimer at <http://www.agriwatch.com/Disclaimer.asp>