

Commodity: Sugar
Contract: December Contract Chart

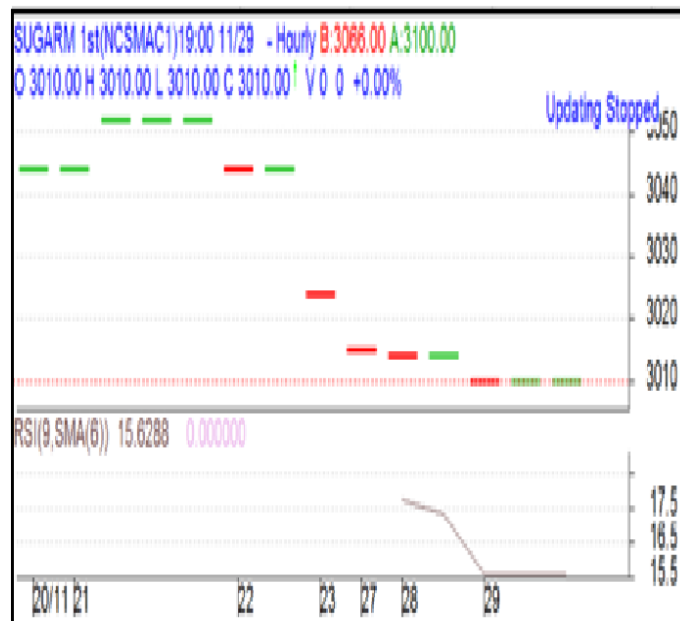
Exchange: NCDEX
Expiry: Dec

Sugar

Technical Commentary:

No major trading activities in the market. Sugar prices shows remain limited trading activities in the market. RSI moves in weak zone hints further fall in the market.

Note: There is no trade volume in near month future contract. Market participants are advised to wait until trade in volume starts.



Strategy: **WAIT**

| Intraday Supports & Resistances | | | S2 | S1 | PCP | R1 | R2 |
|---------------------------------|-------|-----|-------------|-------|------|------|------|
| Sugar | NCDEX | Dec | 2980 | 2990 | 3010 | 3030 | 3040 |
| Intraday Trade Call | | | Call | Entry | T1 | T2 | SL |
| Sugar | NCDEX | Dec | WAIT | | | | |

* Do not carry-forward the position next day.

Disclaimer

The information and opinions contained in the document have been compiled from sources believed to be reliable. The company does not warrant its accuracy, completeness and correctness. Use of data and information contained in this report is at your own risk. This document is not, and should not be construed as, an offer to sell or solicitation to buy any commodities. This document may not be reproduced, distributed or published, in whole or in part, by any recipient hereof for any purpose without prior permission from the Company. IASL and its affiliates and/or their officers, directors and employees may have positions in any commodities mentioned in this document (or in any related investment) and may from time to time add to or dispose of any such commodities (or investment). Please see the detailed disclaimer at <http://www.agriwatch.com/Disclaimer.asp>
 © 2018 Indian Agribusiness Systems Ltd.