

## Domestic Market Highlights

Recent Updates:

As of Sept. 30<sup>th</sup> Sep, 2022 Sugarcane sowing has reached 55.73 Lakh Ha. Vs 55.22 Lakh Ha. same period last year. As per AgriWatch, Sugarcane crushing is likely to start after Diwali Festival in the key growing states.

According to the market sources, sugar mills in Haryana may start their crushing operations from 01<sup>st</sup> week of November 2022. The state is likely to crush 500 lakh quintals of cane during the 2022-23 season.

Punjab government has announced sugarcane state-advised price for the 2022-23 season. The government has hiked SAP by Rs. 20 per Quintal from the existing Rs. 360 to Rs. 380 per Quintal. As per the market sources, sugarcane cultivation has reached 0.97 lakh hectares in Punjab for the 2022-23 season, which was 0.98 lakh hectares during the previous season.

As per the Indian Sugar Mills Association, the opening stock as on 01<sup>st</sup> October 2022 is estimated at 6.00 million tonnes, the sugar production is likely to decrease in the 2022-23 season to 35.5 million tonnes as compared to the previous 36.0 million tonnes in 2021-22 season. Total sugar supply is expected to be 41.5 million tonne and domestic consumption is expected to slightly increase to 27.5 million tonnes in the coming season. Overall closing stock for the 2022-23 season is expected to be 6.00 million tonnes as on 30<sup>th</sup> Sept 2022.

According to the data released by the government, during the 2021-22 season, sugarcane production was estimated at over 5000 lakh metric tonnes, out of which about 3574 lakh metric tonne of sugarcane was crushed by sugar mill to produce about 359 lakh metric tonnes of sugar. (Brazil's sugar production was 353 lakh metric tonnes in the 2021-22 season). AgriWatch has estimated sugar production at 356 lakh tonnes in the 2021-22 season. The increase in sugar production during the 2021-22 season was mainly due to an increase in yield from key sugar-producing states.

| Sugarcane Sowing (Lakh Hectares) As of 30 <sup>th</sup> Sep 2022 |              |              |             |
|--|--------------|--------------|-------------|
| State-wise   | 2022-23      | 2021-22      | 2021-22     |
| Andhra Pradesh   | 0.47         | 0.84         | -0.37       |
| Assam  | 0.29         | 0.30         | -0.01       |
| Bihar  | 2.35         | 2.64         | -0.29       |
| Chhattisgarh   | 0.32         | 0.35         | -0.03       |
| Gujarat  | 2.32         | 2.31         | 0.01        |
| Haryana  | 1.06         | 1.10         | -0.04       |
| Karnataka  | 6.6          | 5.96         | 0.64        |
| Madhya Pradesh   | 0.86         | 1.06         | -0.20       |
| Maharashtra  | 13.52        | 12.32        | 1.20        |
| Odisha   | 0.19         | 0.17         | 0.02        |
| Punjab   | 0.97         | 0.98         | -0.01       |
| Tamil Nadu   | 1.55         | 1.5          | 0.05        |
| Telangana  | 0.31         | 0.29         | 0.02        |
| Uttar Pradesh  | 23.6         | 23.95        | -0.35       |
| Uttarakhand  | 0.92         | 0.93         | -0.01       |
| West Bengal  | 0.14         | 0.17         | -0.03       |
| Others   | 0.26         | 0.35         | -0.08       |
| <b>All-India</b>   | <b>55.73</b> | <b>55.22</b> | <b>0.52</b> |

**Sugar Exports:**

According to the market sources, sugar exports may get affected in Uttar Pradesh during the 2022-23 season. With the expectation of lower production during the 2022-23 season in the state. Sugar exports may get affected. According to the market sources, Sugar production is likely to be 100 MT during the 2022-23 season and consumption is likely to be 40 MT, the state is likely to face a glut-like situation leading the mills to store sugar stocks in their warehouses if the state fails to push the sale of the sweetener in the national market.

Whereas, as per Agriwatch Sources, due to lower rains in the July-Aug month, sugar recovery is expected to be lower in the state which will further affect the sugar production in the state. Sugar production is likely to be lower than 100 lakh tonnes in the 2022-23 season. Also, Sugarcane crushing is likely to begin in the state after Diwali festival.

**Sugarcane Crushing 2022-23**

AgriWatch expects sugar crushing to start from mid-October 2022 for the coming 2022-23 season in Maharashtra. As per the sources, currently the sugarcane crop condition is good in Maharashtra and yield is expected to improve in the coming season. No major crop damage has been reported so far.

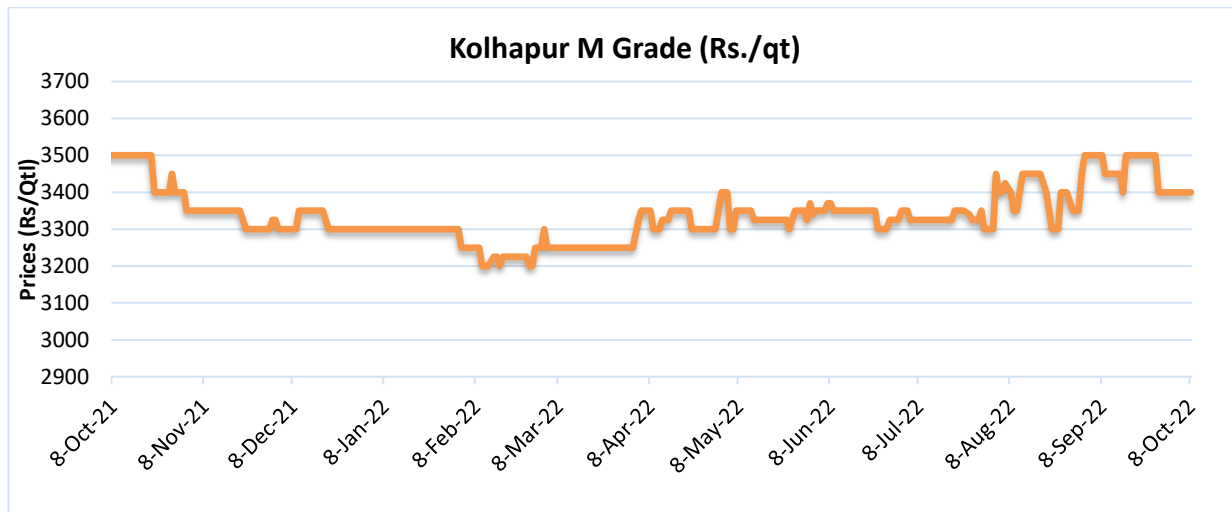
Although, in Uttar Pradesh, the crop yield and sugar recovery are expected to decline due to lower rains in July-August. Sugarcane crushing in Uttar Pradesh is expected to begin after Diwali festival.

**Price Outlook:**

- The average sugar prices were slightly higher at Rs. 3,513 per quintal during the past week from Rs.3,500 per quintal in Delhi market. Whereas, sugar prices in Maharashtra were stable at Rs.3400 per quintal.

**Price Projection for the Next week**

As per AgriWatch, the average prices for Sugar 'M' grade in key Kolhapur market remained stable at Rs.3400 per quintal during the week under review. Sugar prices in the Kolhapur market are likely to range between Rs. 3450- Rs. 3550 per quintal amid high festive demand in the market for the coming week.



**Sugar Price at Kolhapur Market (Rs./Quintal)**

| Forecast Date | Past Week | Coming week |
|---------------|-----------|-------------|
| 10-Sept-22    | 3400      | 3450-3550   |

### Uttar Pradesh: Mill-wise Sugar List (07/10/2022)

| S.no | Mill Name            | Opening Stock | Sold Stock | Balance Stock | Today Rate    |
|------|----------------------|---------------|------------|---------------|---------------|
|      |                      | (in Qtls)     |            |               | (in Rs./Qtls) |
| 1    | ANOOPSAHAR (ANOO)    | 307958        | 6346       | 301612        | 3450          |
| 2    | BAGPAT (BAGP)        | 417989        | 12590      | 405399        | 3485          |
| 3    | BELRAYAN (BELR)      | 698496        | 29480      | 669016        | 3480          |
| 4    | BILASPUR (BILA)      | 135790        | 1800       | 133990        | 3425          |
| 5    | BISALPUR (BISA)      | 370134        | 17260      | 352874        | 3465          |
| 6    | BADAUN (BUDA)        | 191282        | 0          | 191282        | 3425          |
| 7    | GAJRAULA (GAJR)      | 290829        | 250        | 290579        | 3490          |
| 8    | GHOSI (GHOS)         | 91985         | 30         | 91955         | 3500          |
| 9    | KAIMGANJ (KAIM)      | 84809         | 0          | 84809         | 3495          |
| 10   | MAHMUDABAD (MAHM)    | 152981        | 200        | 152781        | 3530          |
| 11   | MORNA (MORN)         | 486069        | 2070       | 483999        | 3480          |
| 12   | NANAUTA (NANA)       | 889494        | 8020       | 881474        | 3460          |
| 13   | NANAPRA (NANP)       | 425404.47     | 0          | 425404.47     | 3520          |
| 14   | POWAYAN (POWA)       | 141962        | 250        | 141712        | 3535          |
| 15   | PURANPUR (PURA)      | 273819        | 4160       | 269659        | 3465          |
| 16   | RAMALA (RAMA)        | 902851        | 18365      | 884486        | 3525          |
| 17   | SAMPORNANAGAR (SAMP) | 488359        | 670        | 487689        | 3465          |
| 18   | SARSAWA (SARS)       | 663882        | 1600       | 662282        | 3450          |
| 19   | SATHA (SATH)         | 12691.87      | 0          | 12691.87      | 0             |

|       |                  |              |            |              |      |
|-------|------------------|--------------|------------|--------------|------|
| 20    | SATHIAON (SATN)  | 165218       | 0          | 165218       | 3570 |
| 21    | SEMIKHERA (SEMI) | 210851       | 1550       | 209301       | 3480 |
| 22    | SNEH ROAD (SNEH) | 729527       | 25360      | 704167       | 3460 |
| 23    | SULTANPUR (SULT) | 25359.06     | 0          | 25359.06     | 3540 |
| 24    | TILHAR (TILH)    | 348611       | 4740       | 343871       | 3475 |
| Total |                  | 8,506,351.40 | 134,741.00 | 8,371,610.40 |      |

Source: Uttar Pradesh Sugar Cooperative Federation

**Ethanol:** According to the market sources, the center may hike the ethanol purchase price by Rs.2 per liter for the 2022-23 season (Dec-Nov). According to the Ministry of petroleum and natural gas, the government has achieved 10.3% ethanol blending in petrol as of June 2022, ahead of the November 2022 deadline. Earlier, during the 2021-22 season, the government increased the procurement price of all three categories of ethanol produced from different sources by 1.27 to 2.55 percent.

Note: Brazil Ethanol production has increased by 2% to 2.12 billion litres till the first half of September 2022.

#### Uttar Pradesh: Mill-wise Ethanol List (10/10/2022)

| S.N<br>o  | Factory Name            | Opening<br>Stock  | Production To<br>Date | Stock On<br>Date | Sale in<br>Hand | Last Sold<br>Rate |
|-----------|-------------------------|-------------------|-----------------------|------------------|-----------------|-------------------|
|           |                         | (in Lac B.L.)     |                       |                  |                 | (in Rs./litre)    |
|           |                         | 10th October 2022 |                       |                  |                 |                   |
| 1         | ANOOPSAHAR (ANOO)       | 3.46              | 29.24                 | 0.43             | 44.98           | 59.08             |
| 2         | GHOSI (GHOS)            | 3.7               | 9.28                  | 0.33             | 27.54           | 59.08             |
| 3         | KAIMGANJ (KAIM)         | 1.62              | 0                     | 1.59             | 9.57            | 46.66             |
| 4         | MAJHOLA (MAJH)          | 0                 | 0                     | 0                | 0               | 0                 |
| 5         | NANAUTA (NANA)          | 2.58              | 11.14                 | 0.79             | 29.63           | 46.66             |
| 6         | NANAPRA (NANP)          | 0                 | 0                     | 0.5              | 7               | 46.66             |
| 7         | SAMPORNANAGAR<br>(SAMP) | 4.84              | 6.91                  | 0.3              | 61.9            | 46.66             |
| 8         | SATHIAON (SATN)         | 14.44             | 19.06                 | 1.14             | 29.74           | 59.08             |
| 9         | SNEH ROAD (SNEH)        | 0.13              | 42.84                 | 0.07             | 92              | 59.08             |
| Tota<br>l |                         | 30.77             | 118.47                | 5.15             | 302.36          |                   |

#### International Market Highlights

| Thailand Sugar Balance Sheet (Nov-May) |                  |         |                      |              |
|--|------------------|---------|----------------------|--------------|
| Season                                 | Sugar Production | Exports | Domestic Consumption | Ending Stock |
| 2020-21                                | 75.87            | 37.39   | 235.0                | 9.06         |
| 2021-22                                | 102.30           | 100.00  | 242.0                | 6.87         |
| 2022-23*                               | 105.00           | 110.00  | 252.0                | 3.85         |

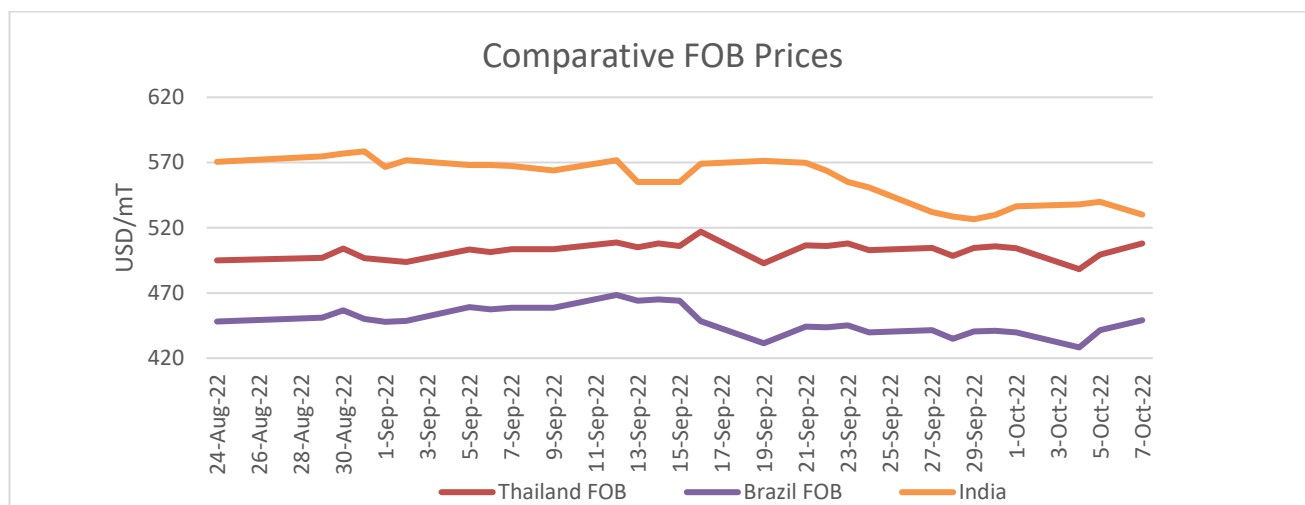
Brazil Sugar Balance Sheet (Apr-Mar)

| Season   | Sugar Production | Exports | Domestic Consumption | Ending Stock |
|----------|------------------|---------|----------------------|--------------|
| 2020-21  | 420.5            | 321.5   | 101.5                | 3.40         |
| 2021-22  | 353.5            | 256.5   | 98                   | 2.40         |
| 2022-23* | 363.7            | 266.2   | 98                   | 1.90         |

Source: USDA; Unit: Lakh Tonnes

Bangladesh government has increased the prices of sugar by Bangladeshi taka (Tk) 6 per kg. The price of packaged sugar has been increased from Tk 89 to Tk 95 as per the announcement made by the commerce ministry. Earlier on 22<sup>nd</sup> September 22, sugar prices of unpackaged refined sugar were at Tk 84 per kg and for packaged sugar was Tk 89 per kg for the local market.

According to UNICA, sugarcane crushing in Brazil has increased by 2.5% to 39.49 million tonnes during the first half of September 2022. The allocation to sugar production has been increased to 48.4% as against 46.4% last season. Earlier, sugar production was expected to fall but with the increase in arrivals and good sugar recovery, production has now increased in Brazil.

**FOB Prices:**

International Sugar FOB (USD/mT)

| Month ago | Thailand FOB | Brazil FOB | Indian White Sugar FOB | INR   |
|-----------|--------------|------------|------------------------|-------|
| 7-Sep-22  | 503          | 459        | 567                    | 79.93 |
| 7-Oct-22  | 508          | 449        | 530                    | 82.4  |
| % Change  | 0.99         | -2.18      | -6.53                  | 3.09  |

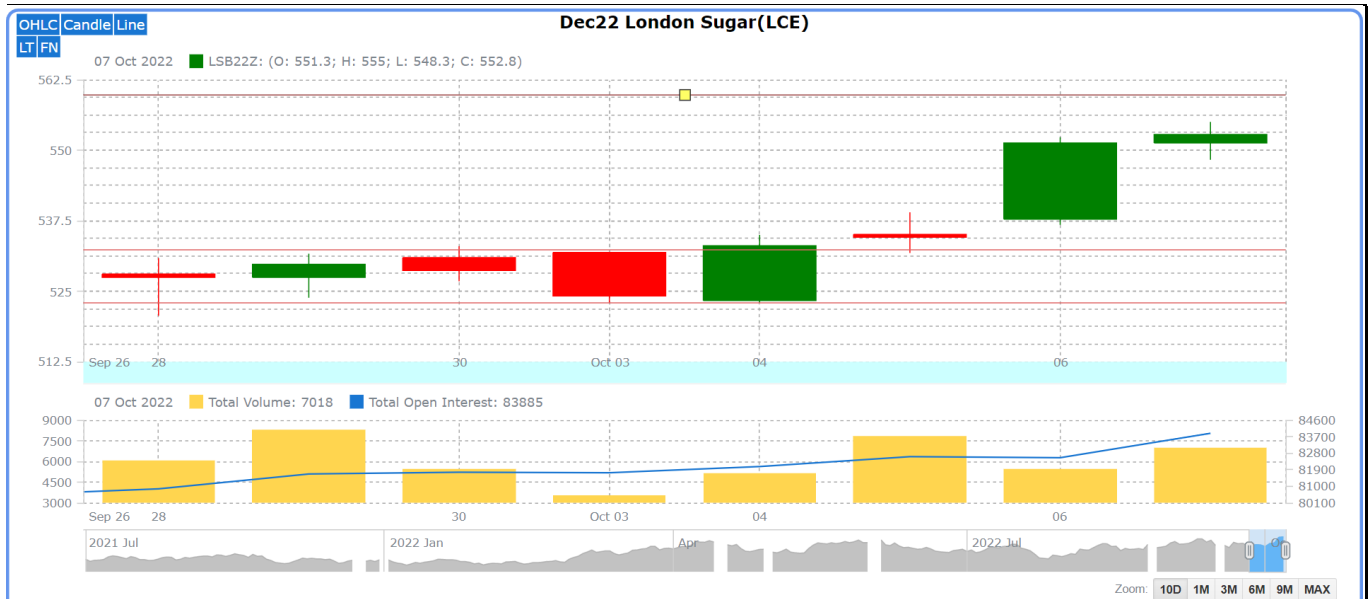
ICE & LIFE Future Prices

| International Sugar Futures ICE |                             |           |           |           | (Rs/Qtl) |            |
|---------------------------------|-----------------------------|-----------|-----------|-----------|----------|------------|
| Futures month                   | % Change over previous year | Today     | Week ago  | Month Ago | Year Ago | RBI Dollar |
|                                 |                             | 07-Oct-22 | 30-Sep-22 | 07-Sep-22 | 7-Oct-21 | 07-Oct-22  |
| Oct-22                          | 2.12                        | 3184      | 3027      | 3063      | 3118     | 82.40      |
| Mar-23                          | 3.57                        | 3448      | 3230      | 3191      | 3329     |            |
| May-23                          | 0.93                        | 3285      | 3094      | 3094      | 3255     |            |

| International Sugar Futures LIFFE |                             |           |           |           | (Rs/Qtl) |            |
|-----------------------------------|-----------------------------|-----------|-----------|-----------|----------|------------|
| Futures month                     | % Change over previous year | Today     | Week ago  | Month Ago | Year Ago | RBI Dollar |
|                                   |                             | 07-Oct-22 | 30-Sep-22 | 07-Sep-22 | 7-Oct-21 | 07-Oct-22  |
| Oct-22                            | 6.59                        | 4019      | 3842      | 3868      | 3771     | 82.40      |
| Dec-22                            | 24.25                       | 4555      | 4312      | 4253      | 3666     |            |
| Mar-23                            | 7.98                        | 4104      | 3923      | 3936      | 3800     |            |

The Raw Sugar futures ICE traded higher by 2.12 percent at Rs. 3184 per Quintal. The LIFE Sugar traded higher at Rs. 4019 per Quintal as compared to the previous season of Rs. 3771 per Quintal.

## International Sugar Futures Price Projection

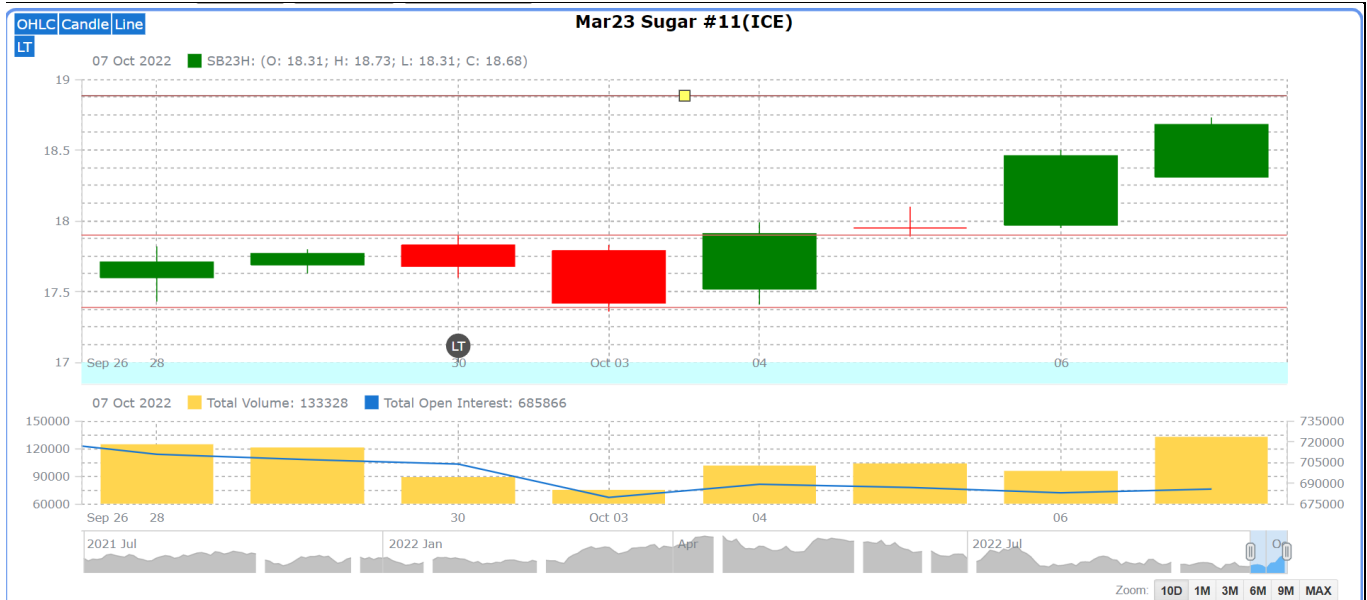


## LIFFE (White Sugar Exchange) Future Market Sugar Scenario (Dec'22 Contract)

## Technical Commentary

- As depicted in the above chart, market showed up and intact trend during the week under review.
- Volume has increased in the market which further indicates slight buying strength.
- Overall, the prices are expected to remain rangebound in the coming week.

| International Sugar Futures Price Projection |                |               |  |
|--|----------------|---------------|--|
|  | Contract Month | Present Quote | The expected Price level for next week |
| LIFFE Sugar (US \$/MT)                       | Dec'22         | 550           | 552-562                                |



### ICE (Raw Sugar Exchange) Future Market Scenario (Oct'22 Contract)

#### Technical Commentary:

- ☐ As depicted in the above chart, market has moved upward during the last week.
- ☐ Market is currently indicating slight buying strength.
- ☐ Market is further expected to remain range bound in the coming week.

| International Sugar Futures Price Projection |                |               |  |
|--|----------------|---------------|--|
|  | Contract Month | Present Quote | The expected Price level for next week |
| ICE Sugar #11 (US Cent/lb)                   | Oct'22         | 18.70         | 18.64-18.78                            |



## Weekly Sugar &amp; Gur Price

| Spot Sugar Prices Scenario (Weekly) (Average)       |            |                        |                            |                            |        |
|---|------------|------------------------|----------------------------|----------------------------|--------|
| Commodity   | Centre     | Variety                | Average Prices (Rs/Qtl)    |                            | Change |
| Sugar   |            |                        | 03rd Oct'22 to 08th Oct'22 | 26th Sep'22 to 01st Oct'22 |        |
| Delhi   | Delhi      | M-Grade                | 3513                       | 3500                       | 13     |
|   | Delhi      | S-Grade                | 3493                       | 3480                       | 13     |
| Uttar Pradesh                                       | Khatauli   | M-Grade                | 3625                       | 3567                       | 58     |
|   | Ramala     | M-Grade                | 3470                       | 3458                       | 12     |
|   | Dhampur    | M-Grade Ex-Mill        | 3550                       | 3531                       | 19     |
|   | Dhampur    | S-Grade Ex-Mill        | 3530                       | 3514                       | 16     |
|   | Dhampur    | L-Grade Ex-Mill        | 3600                       | 3581                       | 19     |
| Maharashtra   | Mumbai     | M-Grade                | 3653                       | 3634                       | 19     |
|   | Mumbai     | S-Grade                | 3533                       | 3535                       | -2     |
|   | Nagpur     | M-Grade                | 3525                       | 3542                       | -17    |
|   | Nagpur     | S-Grade                | 3483                       | 3453                       | 30     |
|   | Kolhapur   | M-Grade                | 3400                       | 3417                       | -17    |
|   | Kolhapur   | S-Grade                | 3358                       | 3328                       | 30     |
| Assam   | Guhawati   | S-Grade                | 3673                       | 3642                       | 30     |
| Meghalaya   | Shillong   | S-Grade                | 3678                       | 3648                       | 30     |
| Andhra Pradesh                                      | Vijayawada | M-Grade (With Duty)    | 3920                       | 3963                       | -43    |
|   | Vijayawada | S-Grade (With Duty)    | 3880                       | 3923                       | -43    |
| West Bengal   | Kolkata    | M-Grade                | 3920                       | 3920                       | Unch   |
| Tamil Nadu  | Chennai    | S-Grade (With GST)     | 3500                       | 3500                       | Unch   |
|   | Dindigul   | M-Grade (DCA)          | 3840                       | 3840                       | Unch   |
|   | Coimbatore | M-Grade (DCA)          | 3840                       | 3840                       | Unch   |
| Chattisgarh   | Ambikapur  | M-Grade (Without Duty) | 3850                       | 3850                       | Unch   |
| Sugar Prices are in INR/Quintal. (1 Quintal=100 kg) |            |                        |                            |                            |        |

| Spot Jaggery(Gur) Prices Scenario (Weekly) (Average) |               |                          |                            |                            |        |
|--|---------------|--------------------------|----------------------------|----------------------------|--------|
| Commodity  | Centre        | Variety                  | Prices (Rs/Qtl)            |                            | Change |
| Jaggery(Gur)   |               |                          | 03rd Oct'22 to 08th Oct'22 | 26th Sep'22 to 01st Oct'22 |        |
| Uttar Pradesh  | Muzaffarnagar | Chaku Fresh              | 4033                       | 4214                       | -181   |
|  | Muzaffarnagar | Chaku(Arrival)(40kg Bag) | 3700                       | 600                        | 3100   |
|  | Muzaffarnagar | Khurpa (Fresh)           | 3738                       | NA                         | -      |
|  | Muzaffarnagar | Laddoo (Fresh)           | 4090                       | NA                         | -      |
|  | Muzaffarnagar | Rascut (Fresh)           | NA                         | NA                         | -      |
|  | Hapur         | Chaurasa                 | NA                         | 2982                       | -      |

|                |               |                   |      |      |     |
|----------------|---------------|-------------------|------|------|-----|
|                | Hapur         | Balti             | NA   | 3140 | -   |
| Andhra Pradesh | Chittur       | Gold              | NA   | NA   | -   |
|                |               | White             | NA   | NA   | -   |
|                |               | Black             | NA   | NA   | -   |
| Maharashtra    | Latur         | Lal Variety       | NA   | NA   | -   |
| Karnataka      | Bangalore     | Mudde (Average)   | 4550 | 4325 | 225 |
|                | Belgaum       | Mudde (Average)   | NA   | 800  | -   |
|                | Belthangadi   | Yellow (Average)  | NA   | NA   | -   |
|                | Bijapur       | Achhu             | NA   | NA   | -   |
|                | Gulbarga      | Other (Average)   | 2421 | 2360 | 61  |
|                | Mahalingapura | Penti (Average)   | NA   | 3183 | -   |
|                | Mandya        | Achhu (Medium)    | 3373 | 3392 | -19 |
|                | Mandya        | Kurikatu (Medium) | 3266 | 3230 | 36  |
|                | Mandya        | Other (Medium)    | 3286 | 3292 | -6  |
|                | Mandya        | Yellow (Medium)   | 3266 | 3302 | -36 |
|                | Shimoga       | Achhu (Average)   | 3800 | 3810 | -10 |

| Spot Sugar Prices Scenario (Weekly) |            |                     |          |          |           |          |
|-------------------------------------|------------|---------------------|----------|----------|-----------|----------|
| Commodity                           | Centre     | Variety             | Today    | Week Ago | Month Ago | Year Ago |
| Sugar                               |            |                     | 8-Oct-22 | 1-Oct-22 | 8-Sep-22  | 8-Oct-21 |
| Delhi                               | Delhi      | M-Grade             | 3520     | 3550     | 3520      | 3650     |
|                                     | Delhi      | S-Grade             | 3500     | 3530     | 3500      | 3630     |
| Uttar Pradesh                       | Khatauli   | M-Grade             | 3625     | 3645     | 0         | 0        |
|                                     | Ramala     | M-Grade             | 3470     | 3470     | 0         | 0        |
|                                     | Dhampur    | M-Grade Ex-Mill     | 3550     | 3585     | 0         | 0        |
|                                     | Dhampur    | S-Grade Ex-Mill     | 3530     | 3565     | 0         | 0        |
|                                     | Dhampur    | L-Grade Ex-Mill     | 3600     | 3635     | 0         | 0        |
| Maharashtra                         | Mumbai     | M-Grade             | 3660     | 3636     | 3640      | 3780     |
|                                     | Mumbai     | S-Grade             | 3530     | 3536     | 3562      | 3620     |
|                                     | Nagpur     | M-Grade             | 3525     | 3525     | 3625      | 3625     |
|                                     | Nagpur     | S-Grade             | 3475     | 3475     | 3525      | 3525     |
|                                     | Kolhapur   | M-Grade             | 3400     | 3400     | 3500      | 3500     |
|                                     | Kolhapur   | S-Grade             | 3350     | 3350     | 3400      | 3400     |
| Assam                               | Guhawati   | S-Grade             | 3664     | 3664     | 3715      | 3715     |
| Meghalaya                           | Shillong   | S-Grade             | 3670     | 3670     | 3720      | 3720     |
| Andhra Pradesh                      | Vijayawada | M-Grade (With Duty) | 3920     | 3960     | 4000      | 4020     |
|                                     | Vijayawada | S-Grade (With Duty) | 3880     | 3920     | 3900      | 3920     |
| West Bengal                         | Kolkata    | M-Grade             | 3920     | 3920     | 3900      | 3950     |
| Tamil Nadu                          | Chennai    | S-Grade             | 3500     | 3500     | 3550      | 3880     |
|                                     | Dindigul   | M-Grade (DCA)       | 3840     | 3840     | 3800      | 3900     |

|   |            |                        |      |      |      |      |
|---|------------|------------------------|------|------|------|------|
|   | Coimbatore | M-Grade (DCA)          | 3840 | 3840 | 3840 | 3900 |
| <b>Chattisgarh</b>                                  | Ambikapur  | M-Grade (Without Duty) | 3850 | 3850 | 3850 | 3850 |
| Sugar Prices are in INR/Quintal. (1 Quintal=100 kg) |            |                        |      |      |      |      |

| Spot Jaggery(Gur) Prices Scenario (Weekly) |               |                          |          |          |           |          |
|--|---------------|--------------------------|----------|----------|-----------|----------|
| Commodity                                  | Centre        | Variety                  | Today    | Week Ago | Month Ago | Year Ago |
| Jaggery(Gur)                               |               |                          | 8-Oct-22 | 1-Oct-22 | 8-Sep-22  | 8-Oct-21 |
| <b>Uttar Pradesh</b>                       | Muzaffarnagar | Chaku Sukha              | 3920     | 4125     | 0         | 0        |
|  | Muzaffarnagar | Chaku(Arrival)(40kg Bag) | 1000     | 100      | 0         | 0        |
|  | Muzaffarnagar | Khurpa                   | 3795     | 0        | 0         | 3578     |
|  | Muzaffarnagar | Laddoo                   | 4125     | 0        | 0         | 4000     |
|  | Muzaffarnagar | Rascut                   | NA       | 0        | 0         | 0        |
|  | Hapur         | Chaurasa                 | NA       | 0        | 2900      | 3300     |
|  | Hapur         | Balti                    | NA       | 0        | 3060      | 3425     |
| <b>Andhra Pradesh</b>                      | Chittur       | Gold                     | NR       | 0        | 0         | 0        |
|  |               | White                    | NR       | 0        | 0         | 0        |
|  |               | Black                    | NR       | 0        | 0         | 0        |
| <b>Maharashtra</b>                         | Latur         | Lal Variety              | NR       | 0        | 0         | 0        |
| <b>Karnataka</b>                           | Bangalore     | Mudde (Average)          | NA       | 4550     | 4550      | 4550     |
|  | Belgaum       | Mudde (Average)          | NA       | 0        | 0         | 3800     |
|  | Belthangadi   | Yellow (Average)         | NA       | 0        | 0         | 0        |
|  | Bijapur       | Achhu                    | NA       | 0        | 0         | 0        |
|  | Gulbarga      | Other (Average)          | 2900     | 2850     | 3100      | 0        |
|  | Mahalingapura | Penti (Average)          | NA       | 0        | 3458      | 3363     |
|  | Mandya        | Achhu (Medium)           | NA       | 3400     | 3580      | 3280     |
|  | Mandya        | Kurikatu (Medium)        | NA       | 3300     | 3400      | 3100     |
|  | Mandya        | Other (Medium)           | NA       | 3350     | 3360      | 3000     |
|  | Mandya        | Yellow (Medium)          | NA       | 3250     | 3530      | 3150     |
|  | Shimoga       | Achhu (Average)          | NA       | 3800     | 3850      | 3700     |

| International Sugar Prices (Weekly Average) |                |                            |                            |        |
|---|----------------|----------------------------|----------------------------|--------|
|   | Contract Month | 03rd Oct'22 to 08th Oct'22 | 26th Sep'22 to 01st Oct'22 | Change |
| <b>ICE Sugar #11 (US Cent/lb)</b>           | 22-May         | 17.29                      | 16.96                      | 0.33   |
|   | 22-Jul         | 16.89                      | 16.57                      | 0.32   |
|   | 22-Oct         | 16.92                      | 17.97                      | -1.05  |
| <b>LIFFE Sugar (US \$/MT)</b>               | 22-May         | 490.32                     | 473.80                     | 16.52  |
|   | 22-Aug         | 480.94                     | 465.50                     | 15.44  |
|   | 22-Oct         | 472.40                     | 529.70                     | -57.30 |

## Retail and Wholesale Sugar &amp; Gur Price

| Retail Prices                   |          |          |
|---------------------------------|----------|----------|
| Commodity: Sugar& Gur (Rs./Kg.) |          |          |
| Date                            | 8-Oct-22 | 8-Oct-22 |
| Centre                          | Sugar    | Gur      |
| <b>NORTH ZONE</b>               |          |          |
| CHANDIGARH                      | 42       | 48       |
| DELHI                           | 41       | 56       |
| HISAR                           | 40       | 42       |
| KARNAL                          | 46       | 49       |
| PANCHKULA                       | 44       | 46       |
| GURGAON                         | 42       | 44       |
| SHIMLA                          | 44       | 43       |
| MANDI                           | 42       | 43       |
| DHARAMSHALA                     | 42       | 45       |
| SOLAN                           | 43       | 46       |
| AMRITSAR                        | 42       | 60       |
| LUDHIANA                        | 40       | 50       |
| BATHINDA                        | 41       | 52       |
| LUCKNOW                         | 41       | 53       |
| KANPUR                          | 40       | 48       |
| VARANASI                        | 49       | 57       |
| AGRA                            | 40       | 44       |
| JHANSI                          | 41       | 43       |
| MEERUT                          | 40       | 47       |
| ALLAHABAD                       | 45       | 47       |
| GORAKHPUR                       | 41       | 47       |
| SAHARANPUR                      | 40       | 45       |
| BAREILLY                        | 39       | 47       |
| AYODHYA                         | 39       | 46       |
| MORADABAD                       | 39       | 43       |
| ALIGARH                         | 40       | 43       |
| HARIDWAR                        | 41       | 44       |
| <b>WEST ZONE</b>                |          |          |
| RAIPUR                          | 41       | 48       |

| Daily Wholesale Prices           |          |          |
|----------------------------------|----------|----------|
| Commodity: Sugar & Gur (Rs./Kg.) |          |          |
| Date                             | 8-Oct-22 | 8-Oct-22 |
| Centre                           | Sugar    | Gur      |
| <b>NORTH ZONE</b>                |          |          |
| CHANDIGARH                       | 3550     | 4250     |
| DELHI                            | 3800     | 3650     |
| HISAR                            | 3900     | 3800     |
| KARNAL                           | 3835     | 4205     |
| PANCHKULA                        | 3900     | 4100     |
| GURGAON                          | 4000     | 3800     |
| SHIMLA                           | 4000     | 3900     |
| MANDI                            | 4014     | 3400     |
| DHARAMSHALA                      | 3800     | 3800     |
| SOLAN                            | 3900     | 4000     |
| AMRITSAR                         | 3750     | 4850     |
| LUDHIANA                         | 3800     | 4000     |
| BATHINDA                         | 3880     | 4700     |
| LUCKNOW                          | 3870     | 4360     |
| KANPUR                           | 3900     | 4600     |
| VARANASI                         | 4300     | 4900     |
| AGRA                             | 3850     | 3750     |
| JHANSI                           | 3900     | 4000     |
| MEERUT                           | 3800     | 4400     |
| ALLAHABAD                        | 3980     | 4280     |
| GORAKHPUR                        | 3800     | 4200     |
| SAHARANPUR                       | 3910     | 4045     |
| BAREILLY                         | 3760     | 3900     |
| AYODHYA                          | 3900     | 3900     |
| MORADABAD                        | 3800     | 4000     |
| ALIGARH                          | 3500     | 3750     |
| HARIDWAR                         | 4000     | 4100     |
| <b>WEST ZONE</b>                 |          |          |
| RAIPUR                           | 4000     | 4100     |

|                  |    |    |
|------------------|----|----|
| DURG             | 42 | 47 |
| RAJKOT           | 40 | 51 |
| SURAT            | NR | NR |
| BHUJ             | 43 | 50 |
| SELAMBA          | 39 | 48 |
| WAGHAI           | 43 | 41 |
| BODELI           | 40 | 42 |
| VAPI             | 40 | 53 |
| BHOPAL           | 42 | 45 |
| INDORE           | 41 | 47 |
| GWALIOR          | 47 | 42 |
| JABALPUR         | 42 | 38 |
| REWA             | 43 | 44 |
| SAGAR            | 41 | 37 |
| JHABUA           | 40 | 53 |
| DHARNI           | 40 | 40 |
| LATUR            | 37 | 38 |
| AKLUJ            | 39 | 42 |
| JAIPUR           | 41 | 43 |
| JODHPUR          | 41 | 48 |
| KOTA             | 42 | 47 |
| BHARATPUR        | 40 | 45 |
| AJMER            | 43 | 43 |
| BIKANER          | 46 | 48 |
| <b>EAST ZONE</b> |    |    |
| PATNA            | 44 | 46 |
| BHAGALPUR        | 43 | 41 |
| PURNIA           | 43 | 42 |
| DARBHANGA        | 42 | 40 |
| GAYA             | 42 | 43 |
| MUZZAFARPUR      | 41 | 55 |
| SARAN            | 44 | 50 |
| MUNGER           | 41 | 46 |
| SAHARSA          | 42 | 58 |
| MADHUBANI        | 42 | 52 |
| BOKARO           | NR | NR |
| LOHARDAGA        | 43 | 42 |
| SIMDEGA          | 42 | 45 |
| DHANBAD          | 42 | 48 |
| JEYPORE          | 45 | 45 |
| BARIPADA         | 44 | 56 |
| BALANGIR         | 40 | 47 |
| PURULIA          | 42 | 44 |
| KHARAGPUR        | 42 | 52 |

|                  |      |      |
|------------------|------|------|
| DURG             | 3700 | 4000 |
| RAJKOT           | 3730 | 4800 |
| SURAT            | NR   | NR   |
| BHUJ             | 3800 | 4350 |
| SELAMBA          | 3700 | 4300 |
| WAGHAI           | 3900 | 3800 |
| BODELI           | 3800 | 4000 |
| VAPI             | 3800 | 4900 |
| BHOPAL           | 3610 | 3715 |
| INDORE           | 3690 | 3920 |
| GWALIOR          | 3900 | 4000 |
| JABALPUR         | 3600 | 3400 |
| REWA             | 3750 | 4000 |
| SAGAR            | 3730 | 3525 |
| JHABUA           | 3800 | 4400 |
| DHARNI           | 3800 | 3700 |
| LATUR            | 3620 | 3500 |
| AKLUJ            | 3400 | 3200 |
| JAIPUR           | 3800 | 4000 |
| JODHPUR          | 3850 | 3700 |
| KOTA             | 3610 | 3800 |
| BHARATPUR        | 3800 | 4200 |
| AJMER            | 4100 | 4250 |
| BIKANER          | 3955 | 3865 |
| <b>EAST ZONE</b> |      |      |
| PATNA            | 3975 | 4200 |
| BHAGALPUR        | 3850 | 3800 |
| PURNIA           | 3900 | 3800 |
| DARBHANGA        | 3940 | 3800 |
| GAYA             | 3800 | 3600 |
| MUZZAFARPUR      | 3900 | 4700 |
| SARAN            | 3940 | 4500 |
| MUNGER           | 3920 | 4250 |
| SAHARSA          | 3960 | 4150 |
| MADHUBANI        | 3800 | 4800 |
| BOKARO           | 4000 | 4000 |
| LOHARDAGA        | 4000 | 4100 |
| SIMDEGA          | 4000 | 4000 |
| DHANBAD          | 4000 | 4200 |
| JEYPORE          | 4000 | 4200 |
| BARIPADA         | 4100 | 4200 |
| BALANGIR         | 3660 | 3900 |
| PURULIA          | 4000 | 3800 |
| KHARAGPUR        | 4000 | 4800 |

|                        |    |     |
|------------------------|----|-----|
| RAMPURHAT              | 46 | 58  |
| MALDA                  | 43 | 49  |
| RAIGANJ                | 43 | 58  |
| <b>NORTH EAST ZONE</b> |    |     |
| PORT BLAIR             | 51 | 69  |
| MAYABUNDER             | 49 | 66  |
| SHILLONG               | 44 | 60  |
| TURA                   | 45 | 80  |
| JOWAI                  | 45 | 65  |
| SOHRA                  | 45 | 100 |
| AGARTALA               | 50 | 52  |
| <b>SOUTH ZONE</b>      |    |     |
| VIJAYWADA              | 43 | 56  |
| VISAKHAPATNAM          | 42 | 54  |
| KURNOOL                | 40 | 57  |
| TIRUPATHI              | 40 | 57  |
| BENGALURU              | 42 | 63  |
| DHARWAD                | 39 | 47  |
| MANGALORE              | 38 | 53  |
| MYSORE                 | 38 | 62  |
| BENGALURU (EAST RANGE) | 43 | 58  |
| BELAGAVI               | 42 | 52  |
| KALABURAGI             | 44 | 45  |
| TUMAKURU               | 41 | 63  |
| BELLARY                | 38 | 42  |
| DHAVANAGERE            | 40 | 58  |
| SHIVAMOGGA             | 40 | 44  |
| VIJAYAPUR              | 42 | 47  |
| T.PURAM                | 42 | 74  |
| ERNAKULAM              | NR | NR  |
| KOZHIKODE              | 42 | 61  |
| THRISSUR               | 45 | 65  |
| PALAKKAD               | 41 | 51  |
| WAYANAD                | 40 | 51  |
| KASARGOD               | 40 | 45  |
| KOTTAYAM               | 42 | 65  |

|                        |      |      |
|------------------------|------|------|
| RAMPURHAT              | 3940 | 5040 |
| MALDA                  | 3900 | 4200 |
| RAIGANJ                | 4050 | 5300 |
| <b>NORTH EAST ZONE</b> |      |      |
| PORT BLAIR             | 4600 | 6200 |
| MAYABUNDER             | 4500 | 6250 |
| SHILLONG               | 4100 | 5500 |
| TURA                   | 4100 | 7000 |
| JOWAI                  | 4100 | 5500 |
| SOHRA                  | 4300 | 9000 |
| AGARTALA               | 4200 | 4200 |
| <b>SOUTH ZONE</b>      |      |      |
| VIJAYWADA              | 3980 | 4900 |
| VISAKHAPATNAM          | 3900 | 4800 |
| KURNOOL                | 3400 | 4200 |
| TIRUPATHI              | 3800 | 5000 |
| BENGALURU              | 3700 | 4800 |
| DHARWAD                | 3750 | 4150 |
| MANGALORE              | 3800 | 4200 |
| MYSORE                 | 3600 | 4600 |
| BENGALURU (EAST RANGE) | 3750 | 4800 |
| BELAGAVI               | 3720 | 4000 |
| KALABURAGI             | 3780 | 4100 |
| TUMAKURU               | 3800 | 4800 |
| BELLARY                | 3600 | 3800 |
| DHAVANAGERE            | 3750 | 4100 |
| SHIVAMOGGA             | 3800 | 4000 |
| VIJAYAPUR              | 3700 | 4000 |
| T.PURAM                | 3980 | 5200 |
| ERNAKULAM              | 3760 | 4900 |
| KOZHIKODE              | 3800 | 4500 |
| THRISSUR               | 3780 | 4500 |
| PALAKKAD               | 3760 | 4600 |
| WAYANAD                | 3860 | 4200 |
| KASARGOD               | 3820 | 4150 |
| KOTTAYAM               | 3875 | 5200 |

|                       |      |       |
|-----------------------|------|-------|
| PATHANAMTHITTA        | 42   | 85    |
| ALAPUZHA              | 40   | 59    |
| KOLLAM                | 44   | 71    |
| PUDUCHERRY            | 42   | 52    |
| CHENNAI               | 40   | 59    |
| TIRUNELVELI           | 40   | 50    |
| CUDDALORE             | 39   | 50    |
| DHARMAPURI            | 38   | 50    |
| VELLORE               | 39   | 55    |
| RAMANATHAPURAM        | 40   | 49    |
| HYDERABAD             | 36   | 51    |
| KARIMNAGAR            | 39   | 52    |
| WARANGAL              | 41   | 53    |
| ADILABAD              | 39   | 57    |
| SURYAPET              | 47   | 55    |
| JADCHERLA             | 39   | 55    |
| <b>Average Price1</b> | 42.6 | 51.54 |
| <b>Maximum Price1</b> | 55   | 120   |
| <b>Minimum Price1</b> | 35   | 33    |
| <b>Modal Price1</b>   | 42   | 50    |

|                       |         |        |
|-----------------------|---------|--------|
| PATHANAMTHITTA        | 3450    | 7250   |
| ALAPUZHA              | 3820    | 4750   |
| KOLLAM                | 3850    | 5000   |
| PUDUCHERRY            | 3800    | 4900   |
| CHENNAI               | 3800    | 5200   |
| TIRUNELVELI           | 3780    | 4350   |
| CUDDALORE             | 3900    | 4600   |
| DHARMAPURI            | 3700    | 4400   |
| VELLORE               | 3700    | 4600   |
| RAMANATHAPURAM        | 3800    | 4500   |
| HYDERABAD             | 3600    | 4300   |
| KARIMNAGAR            | 3400    | 4400   |
| WARANGAL              | 3900    | 4800   |
| ADILABAD              | 3900    | 4800   |
| SURYAPET              | 3700    | 5500   |
| JADCHERLA             | 3800    | 5000   |
| <b>Average Price1</b> | 3918.22 | 4453.9 |
| <b>Maximum Price1</b> | 4800    | 9000   |
| <b>Minimum Price1</b> | 3300    | 3100   |
| <b>Modal Price1</b>   | 3800    | 4000   |

#### Disclaimer

The information and opinions contained in the document have been compiled from sources believed to be reliable. The company does not warrant its accuracy, completeness and correctness. Use of data and information contained in this report is at your own risk. This document is not, and should not be construed as, an offer to sell or solicitation to buy any commodities. This document may not be reproduced, distributed or published, in whole or in part, by any recipient hereof for any purpose without prior permission from the Company. IASL and its affiliates and/or their officers, directors and employees may have positions in any commodities mentioned in this document (or in any related investment) and may from time to time add to or dispose of any such commodities (or investment). Please see the detailed disclaimer at <http://www.agriwatch.com/disclaimer.php> © 2022 Indian Agribusiness Systems Ltd.