

Commodity: Refined Soybean Oil
Contract: Apr

Exchange: NCDEX
Expiry: Apr 20th, 2014

REFINED SOYBEAN OIL (RSBO)

Technical Commentary:

- Candlestick chart pattern indicates consolidation in the market.
- Prices closed above 18-day EMA and 50D SMA which support the bulls. PVO analysis depicts short covering in the market.
- Oscillator RSI is moving towards neutral zone.

The soy oil prices are likely to feature sideways to firm movement.



Strategy: Buy

Intraday Supports & Resistances			S2	S1	PCP	R1	R2
Refined Soy Oil	NCDEX	Apr	711.00	716.00	722.25	730.00	733.00
Intraday Trade Call			Call	Entry	T1	T2	SL
Refined Soy Oil	NCDEX	Apr	BUY	Above 722.25	727.25	728	719.25

* Do not carry-forward the position next day.

Commodity: Crude Palm Oil
Contract: Apr

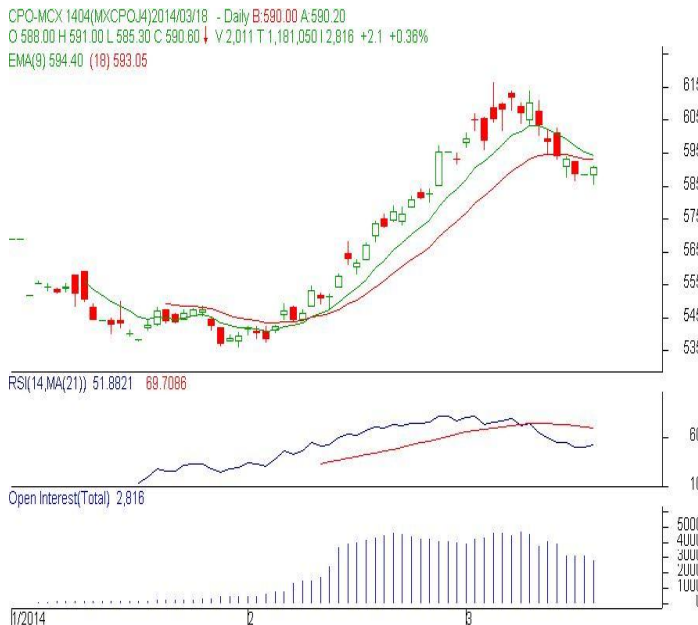
Exchange: MCX
Expiry: Apr 30th, 2014

CRUDE PALM OIL (CPO)

Technical Commentary:

- Candlestick chart pattern reflects slight gains in the market.
- Prices closed below 18-day EMA support the bears. PVO analysis depicts consolidation in the market.
- Oscillator RSI is moving in the neutral zone.

The CPO prices are likely to feature range bound today.



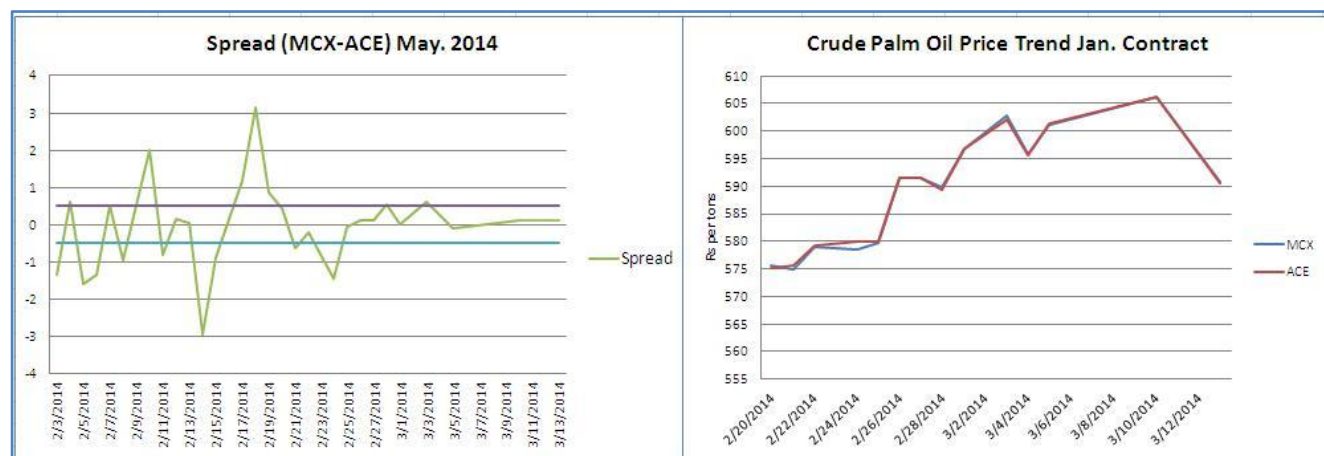
Strategy: Buy

Intraday Supports & Resistances			S2	S1	PCP	R1	R2
Crude Palm Oil	MCX	Apr	580.00	583.00	590.10	598.00	601.00
Intraday Trade Call			Call	Entry	T1	T2	SL
Crude Palm Oil	MCX	Apr	BUY	Above 590	596	597	586.40

* Do not carry-forward the position next day.

MCX-ACE Crude Palm OIL SPREAD:

The MCX-ACE CPO spread is hovering near to -0.1 levels. Arbitrage opportunity is seen above 0.5 and below -0.5 levels.



Inter Exchange Arbitrage				
Exchange	Exp Month	Prices	Buy/Sell	Strategy
MCX	May,14	590.6	-	No Arbitrage opportunity seen between MCX-ACE CPO May Contract.
ACE	May,14	590.7	-	
13-Mar-14	Spread	-0.1		
Investment	Gross Return	Net Return		Expected Net Return in %
59065	100	-325.268		-0.55
*Net Return = Gross Return - (Brokerage+CTT+ other charges)				

Arbitrage Opportunity:

No Arbitrage opportunity seen between MCX-ACE CPO May Contract.

Disclaimer

The information and opinions contained in the document have been compiled from sources believed to be reliable. The company does not warrant its accuracy, completeness and correctness. Use of data and information contained in this report is at your own risk. This document is not, and should not be construed as, an offer to sell or solicitation to buy any commodities. This document may not be reproduced, distributed or published, in whole or in part, by any recipient hereof for any purpose without prior permission from the Company. IASL and its affiliates and/or their officers, directors and employees may have positions in any commodities mentioned in this document (or in any related investment) and may from time to time add to or dispose of any such commodities (or investment). Please see the detailed disclaimer at <http://www.agriwatch.com/Disclaimer.asp>
 © 2014 Indian Agribusiness Systems Pvt Ltd.